

voice[®] reader

STUDIO 22

Manual



Linguatec
Language Technologies

Table of Contents

1. Introduction.....	5
1.1 Technical Support.....	5
1.2 System Requirements.....	6
1.3 Installation.....	7
1.3.1 Installation from DVD.....	7
1.3.2 Installation via Downloadlink.....	7
1.3.3 Import of Additional Dictionaries.....	7
1.4 Installing Additional Languages.....	8
1.5 Product Activation.....	8
1.5.1 Instant Activation.....	9
1.5.2 Manual Activation.....	10
1.6 Deinstallation.....	12
2. Using Voice Reader Studio 22.....	12
2.1 User Interface – Overview and Functions.....	12
2.1.1 File Tab.....	13
2.1.2 Read Tab.....	13
2.1.3 Tab Export.....	20
2.1.4 Edit Tab.....	28
2.1.5 Insert Tab.....	29
2.1.6 Page Layout Tab.....	30
2.1.7 View Tab.....	30
2.1.8 Further Tabs.....	32
2.1.9 Read Button.....	32
2.1.10 Quick Access Toolbar.....	32
2.1.11 Customizing the Multi-Function Ribbon.....	34
2.1.12 Context Menu.....	35
2.2 Multi-Language Voices (ML).....	36
2.3 Accent Voices.....	37
2.3.1 Prerequisite.....	37
2.3.2 Select Accent Voice.....	37
2.4 Opening and editing documents.....	38
2.4.1 Supported file formats.....	38
2.4.2 Opening a file.....	38
2.4.3 Inserting or exchanging text via clipboard.....	38

2.4.4 Opening a text via Drag & Drop.....	38
2.4.5 Saving text	39
2.4.6 Printing text.....	39
2.5 Reading.....	39
2.5.1 Preparations	39
2.5.2 Start and stop reading.....	40
2.5.3 Reading Bar.....	40
2.6 Exporting Text to an audio file	42
2.6.1 Preparation.....	42
2.6.2 Starting export.....	42
2.7 Using Voice Markups to customize audio output	43
2.7.1 Adjusting voice and language with Voice Markups.....	44
2.7.1.1 Change reading language (ML voices only) for a single voice	45
2.7.1.2 Change reading language via Voice Markup if several languages are installed.....	46
2.7.1.3 Adjuste the voice characteristics.....	46
2.7.2 Using Speaker Profiles	48
2.7.3 Inserting Pause <Pause=XX/>	50
2.7.4 Length of Pauses after a reading unit <Wait=XX/>	51
2.7.5 Text Normalization <Tn=XX/>.....	51
2.7.6 Inserting a Phonetic Transcription <TOI=LHP/>	53
2.7.7 Inserting a WAV file <Audio="XX.wav"/>.....	54
2.7.8 Changing Speaker Style <Style=XX/>	55
2.7.9 Defining the Prosodic Binding to the following word <Prosodic=XX/>	55
2.8 Dictionary Management.....	56
2.8.1 Creating, editing and managing dictionaries.....	56
2.8.2 Creating and editing dictionary entries.....	59
2.8.2.1 Create a new dictionary entry using the ribbon.....	59
2.8.2.2 Create a new dictionary entry using the context menu.....	59
2.8.2.3 Customize the pronunciation using the Orthographic Transcription.....	60
2.8.2.4 Customize pronunciation using the Phonetic Transcription	61
2.8.3 Exporting dictionaries.....	66
2.8.4 Importing dictionaries	66
2.9 Retrieving information	67
3. Voice Reader Studio 22 Direct.....	67
3.1 Starting Voice Reader Studio 22 Direct	67
3.2 Buttons of Voice Reader Studio 22 Direct.....	68

3.3 Reading and Export Options of Voice Reader Studio 22 Direct	69
3.4 Background Music and Reverb in Voice Reader Studio 22 Direct.....	70
3.4.1 Reading Options: Background Music	70
3.4.2 Export Options: Background Music and Reverb.....	71
3.5 Automatic Settings (One-Click Clipboard Access)	71
3.6 Manually reading and exporting text directly from the clipboard.....	73
3.7 Manually entering text into the Direct Editor	74
4. Integration Manager	75
4.1 Microsoft Word Plugin	76
4.2 Microsoft Outlook Plugin	77
4.3 Microsoft PowerPoint Plugin.....	79
4.4 Deactivated Office Add-In	81
5. Adjusting Options (Reading and Export Options).....	81
5.1 Reading Options	82
5.2 Export Options.....	84
5.3 Application Options	85
6. Notes on using audio files	86
7. Appendix.....	87
7.1 Phonetic Transcription	87
7.2 Keyboard Navigation	87
7.3 ML-Voices and Extended Language Abilities.....	90
7.4 Accent Voices	92
7.5 Language Codes.....	94
7.6 Speaker Style and Voices.....	98
7.7 SAPI5.....	100

M221114

1. Introduction

Voice Reader Studio 22 is a precise and reliable speech output program that uses remarkably natural sounding voices and is available in many languages. Voice Reader Studio 22 converts any of your texts to voice professionally on your PC – either to listen to it immediately or to export it to audio files, e. g. for transfer to a smartphone or MP3 player.

Audio output can be professionally customized using commands that are inserted directly into the text (**Voice Markups**). These enable you, for example, to realize speaker and language changes (if you have multiple languages installed or if you use a ML voice), to set speed, pitch, timbre and volume for text passages or individual words, pause control, text normalization, speech style (voice-dependent), to insert a phonetic transcription or an audio file. With the option of adding **background music**, you can create moods and enhance the effect of the content.

For the export into an audio file is offered the option to add the **audio effect reverb** and you can also have a **subtitle file** created in parallel during the audio export. If required, the vocabulary can be expanded via the **dictionary functionality** and the desired pronunciation can be assigned to the defined terms.

The Voice Reader Studio voices are **SAPI5** compatible and can be selected also as voices for Windows speech output via the Windows SAPI5 interface.

A new feature are the **accent voices**. The requirements and options are described in chapter 2.3.

This manual explains how to set up and use Voice Reader Studio 22 on your PC.

Thank you for choosing Voice Reader Studio 22. We hope you enjoy using it!

For more information on Linguatec and other speech technology products, please visit our homepage at www.linguatec.de .

1.1 Technical Support

Support on the Internet

If you experience questions that cannot be solved using the manual or the online help, please visit our comprehensive support area on the Internet:

www.linguatec.de/en/services/support-faqs/

You will find there a compilation of the most frequently asked questions (FAQs).

Experience has shown that you can find there prepared solutions for quickly resolving almost all user questions.

Personal support

If you have a specific problem that cannot be resolved using the FAQs, we will gladly provide you with personal support. Support will be provided via email and is free for registered users, for up to 90 days following the purchase of Voice Reader Studio 22. Therefore, please take care to correctly enter your personal information when activating the program.

All questions directed to support must include the following information:

- Program version
- Operating system
- Description of the error, including any error messages received

Please use the support form for your questions:

<https://www.linguatec.de/en/services/supportform/>

General Questions and Suggestions

Please contact us if you have any questions regarding additional languages, business solutions, or other language technology products. Use the contact form provided at:

<https://www.linguatec.de/en/contact/>

Your suggestions for Voice Reader Studio 22 and this manual are always welcome, and we will make every effort to consider them in the continuing development of our products.

1.2 System Requirements

Before installing Voice Reader Studio 22, please ensure that the system requirements are fulfilled:

Operating system:	Windows 11, Windows 10 or Windows 8
Available hard disk space:	Up to 4 GB per installed Voice Reader Studio language (depending on the selected language)
Memory:	2 GB RAM
Other:	Internet connection for product activation
MS-Office Plugin:	Voice Reader Studio 22 offers Plugins for a locally installed MS-Office for the following applications: <ul style="list-style-type: none">- Microsoft Word (Office 2021, 2019, 2016, 2013)- Microsoft Outlook (Office 2021, 2019, 2016, 2013)- Microsoft PowerPoint (Office 2021, 2019, 2016, 2013)- Microsoft Office 365 in offline mode (Word, Outlook, PowerPoint)

1.3 Installation

Please note that you must be logged in as an administrator to install Voice Reader Studio 22. Make sure that installed antivirus programs or the firewall are not blocking any processes required for installation. Before starting the installation, save any open documents and close all applications.

1.3.1 Installation from DVD

Insert the Voice Reader Studio 22 DVD into your computer's DVD drive to start the installation. If the installation does not start automatically, execute the **VRStudio22Install....exe** file manually. For example: Locate and open the DVD drive in Windows Explorer, then double-click the file **VRStudio22Install....exe** in the DVD folder. Follow the instructions on your screen.

1.3.2 Installation via Downloadlink

If you have purchased Voice Reader Studio 22 as a download, follow the link sent to you by your online vendor and save the Voice Reader Studio 22 installation file to your computer. In this case, also double-click the **VRStudio22Install....exe** and follow the instructions of the installation wizard.

1.3.3 Import of Additional Dictionaries

The installation of Voice Reader Studio 22 creates an import folder in the program directory. If you have installed Voice Reader Studio 22 in the default path, you can find it under:

C:\ProgramData\Linguatec\VoiceReaderStudio22\Data\Import.

It contains the Additional Voice Reader Studio 22 Dictionaries for various languages, which you can import as soon as the installation is finished (provided you have installed the corresponding language).

As soon as you start Voice Reader Studio 22, an information window will remind you of this possibility.

Examples:

If you have installed Voice Reader Studio 22 **British English**, you can import the **additional_dictionary_eng.lvr** dictionary.

If you have installed Voice Reader Studio 22 **American English**, you can import the **additional_dictionary_enu.lvr** dictionary.

If you have installed Voice Reader Studio 22 **Spanish**, you can import the **additional_dictionary_spe.lvr** dictionary.

If you have installed Voice Reader Studio 22 **Italian**, you can import the dictionary **additional_dictionary_iti.lvr**.

If you have installed Voice Reader Studio 22 **German**, you can import the dictionary **additional_dictionary_ged.lvr**.

If you have installed Voice Reader Studio 22 **French**, you can import the dictionary **additional_dictionary_frf.lvr**.

1.4 Installing Additional Languages

If you have already installed Voice Reader Studio 22 and wish to add an additional language, simply run the **VRStudio22Install....exe** installation wizard with the new language from the DVD or the downloaded folder. The existing installation will be recognized, and the additional language will be installed.

For the installation of accent voices, the additional installation of Voice Reader Studio 22 in the associated main language of the accent voice is required, please see **Chapter 2.3**.

1.5 Product Activation

The unlimited usage of Voice Reader Studio 22 requires the activation of the product using the provided **license key**.

Where can I find the license key?

You can find the 25-character license key on the DVD or the DVD cover. If you purchased a download, the online vendor will send the license key to you following completion of the purchase.

For how long can I use the software after the installation before an activation is required?

Voice Reader Studio 22 can be used without activation within 30 days after the installation. In order to continue using the software afterwards, the software must be unlocked with an activation code. As long as Voice Reader Studio 22 has not been activated after the 30 days, the Activation Wizard will be displayed each time the program is started.

Where can I find the activation code?

The **activation code** is generated during the activation, using the entered **license key** and your computer's **hardware codes**.

Where can I find the activation dialogue?

As long as Voice Reader Studio 22 has not been activated yet or the activation is required again (e. g. after reinstallation on the same computer) the Activation Wizard will be displayed automatically each time the program is started.

Does the PC need an internet connection?

For the activation process an internet connection is required.

There is a choice of two activation methods.

- **Instant activation:** If the PC on which Voice Reader Studio 22 has been installed is connected to the Internet, product activation can be performed online within moments.
- **Manual activation:** In case that instant activation is not possible (e. g. when the PC with Voice Reader Studio 22 is not connected to the Internet), you can go online from any other PC to retrieve your activation code on the Linguattec activation website, and then manually transfer it to your PC.

- **Single user license:** The single user license of Voice Reader Studio 22 allows the installation and usage on -1- local computer for -1- user. If more than one user or workstation needs to be equipped, we offer copy licenses. Please contact us directly for further information.
- **Hardware code:** Since the product activation is using a combination of hardware codes, it is connected to the PC on which Voice Reader Studio 22 is installed. The activation code that is generated during the activation can only be used on the PC from which you have initiated the product activation and have read out the hardware code. Furthermore, the hardware code combination also takes the computer name into account. Therefore, do not rename the computer name after the activation.
- **New installation:**
Voice Reader Studio must be reactivated after each reinstallation.
- **Installation of further languages:**
A reactivation is also required if you install a further language of Voice Reader Studio.
- **User access:**
Before fulfilling the activation, please ensure that you are logged in at the computer under the same user and with the rights under which you intend to work with Voice Reader Studio. Alternate access across different users is not supported by the single user license. Please contact us, if you need licenses for multiple users or workstations.

1.5.1 Instant Activation

Instant activation requires that the PC on which Voice Reader Studio 22 has been installed is connected to the internet.

In this case, the instant activation is the preferred method of activation, because - apart from the license key - no further codes need to be entered manually, and product activation is completed within moments.

If your program version has not been activated, the activation dialogue will be displayed each time you start the program.

If you want to perform the activation later, click on the **Activate later** button.

For up to thirty days following installation, you can use Voice Reader Studio 22 without activating the product on this computer.

Activation Steps:

1. Choose the language in which you want the following activation dialogue windows to be displayed, and then click on **Activate now**.
2. In the following dialogue, enter your license key into the field next to the program version that you wish to activate.
In the DVD version, the license key is included in the box.
If you have purchased your program version as a download from an online shop, you should have received your license key by email. (If you have not yet received your license key, please contact the online vendor directly.)
3. Enter your name and your email address. Make sure that your name and email address are entered correctly. This is required to receive support and to take advantage of our discounted update offers.
4. Click on the **Continue** button to move on to the next dialogue box. Under **Activation method**, make sure that the option **Instant activation** is selected. Under **Proxy settings**, leave the default option checked (»Do not use a proxy server«), and click on **Continue** to complete activation.
5. You will receive a message confirming successful activation. You now have unlimited use of Voice Reader Studio 22 on that PC.

If the connection to the activation server fails, you may have to adjust the proxy settings. First try the option **Proxy setting of your system...** If this also does not work, manually enter the proxy server and the corresponding port. In case the instant activation fails, please contact your system administrator, or perform a **manual activation** (see Chapter 1.5.2).

1.5.2 Manual Activation

Advice:

Perform the manual activation solely, if the PC on which Voice Reader Studio 22 is installed is not connected to the internet, or if the instant activation has failed.
Otherwise, instant activation is easier and faster.
Do not perform the manual activation twice for the same hardware code.

For the manual activation, first of all, has to be generated a hardware code on the installation PC (s. item 5 below). With this hardware code and your license key, you can use any other PC to access the Linguattec activation website (www.linguattec.de/en/activation/) to generate an activation code which must then be entered on the installation PC to activate the product. If your program version has not been activated, the activation dialogue will be displayed each time you start the program.

If you want to perform the activation later, click on the **Activate later** button. For up to thirty days following installation, you can use Voice Reader Studio 22 without activating the product.

This is how you proceed for the manual activation:

1. Choose the language in which you want to have displayed the activation dialogue windows. Then click on **Activate now**.

2. In the following dialogue, enter your **license key** into the field next to the program version that you wish to activate. In the DVD version, the license key is included in the box. If you have purchased your program version as a download from an online shop, you should have received your license key by email. (If you have not yet received your license key, please contact the online vendor directly.)

3. Enter your name and your email address. Ensure that the entries are correct. This will be required to receive support and to take advantage of our discounted update offers.

4. Click on the **Continue** button to move on to the next dialogue box. Under **Activation method**, choose the option Manual activation and click on the Continue button to perform the activation. (Proxy settings are irrelevant for manual activation.)

5. In the following dialogue, the hardware code required for the generation of the activation code will be displayed next to the program version. Click on the link **Activation form** to open a HTML document containing the license key you have entered (s. item 2 above) and the hardware code. Either print this form or save it to a mobile data medium (e. g. USB stick). Should neither be possible, make a note of the hardware code and your license key.

6. Connect to the Linguattec activation website (www.linguattec.de/en/activation/) from any PC and enter your license key and the hardware code to generate the activation code.

7. Either print the form containing the activation code or make a note of the code on the print out of the activation form. Please ensure to use exactly the same writing, especially the correct upper and lower case.

8. Return to the **Product activation: Manual activation** dialogue on your PC. If the dialogue has already been closed, please restart Voice Reader Studio 22 to bring up the product activation again. Then repeat steps 1 to 4 as described above.

9. Enter the activation codes received on the activation website into the corresponding field.

10. Click on the **Continue** button to complete the activation.

11. You will receive a message confirming successful activation. You now have unlimited use of Voice Reader Studio 22 on that PC.

1.6 Deinstallation

To deinstall Voice Reader Studio 22 from your PC, use the standard Windows function.

Switch to the Windows **Settings**.

Click on the area: **Apps and Features**.

A list of installed programs will be displayed.

Highlight the entry for Voice Reader Studio 22 and click on **Uninstall**.

If you are asked for an administrator password or confirmation, then enter the password or the confirmation.

If deinstallation is not possible via the standard Windows function, please proceed as follows:

Restart the installation file (VRStudio22Install....exe) of Voice Reader Studio 22. It will detect that the application is still installed and will offer the option of repair or uninstallation. Select the **uninstall** option and follow the displayed instructions.

2. Using Voice Reader Studio 22



Start Voice Reader Studio 22 via its **desktop icon** or out of the program menu (Linguatec > Voice Reader Studio 22).

With Voice Reader Studio 22 you can **convert text into speech** immediately (Chapter 2.4), or you can **export it into an audio file** (Chapter 2.5) for playback at a later time.

You can easily add **background music** both when reading aloud or when exporting into an audio file, creating the voice output even more lively and interesting. In the export option is even included the possibility to mix the sound with the Reverb audio effect.

With the help of **Voice Markups** (Chapter 2.7), that can be inserted in the text editor via an easy-to-use generator, the speech can be professionally set up and be customized professionally.

If you wish to assign a specific pronunciation to certain terms, you can also expand the **vocabulary** as needed (Chapter 2.8).

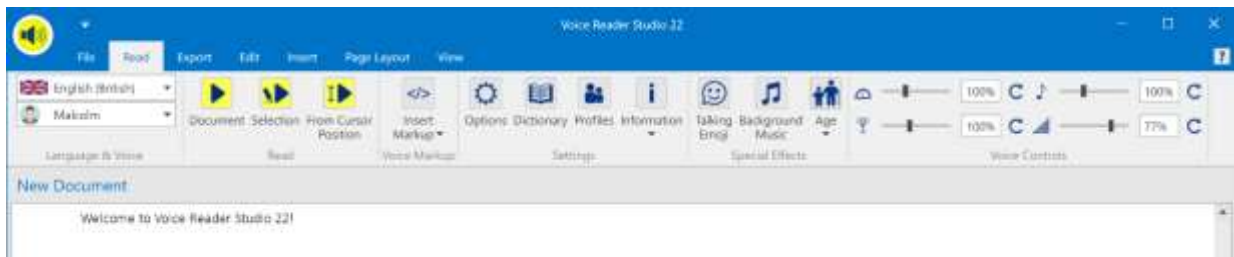
This chapter will explain how to use the various features in the Voice Reader Studio 22 editor. Many of these features are also available in **Voice Reader Studio 22 Direct** (Chapter 3) and in the **plug-ins** for the MS-Office applications Word, Outlook and PowerPoint (Chapter 4).

2.1 User Interface – Overview and Functions

The application window of Voice Reader Studio 22 contains:

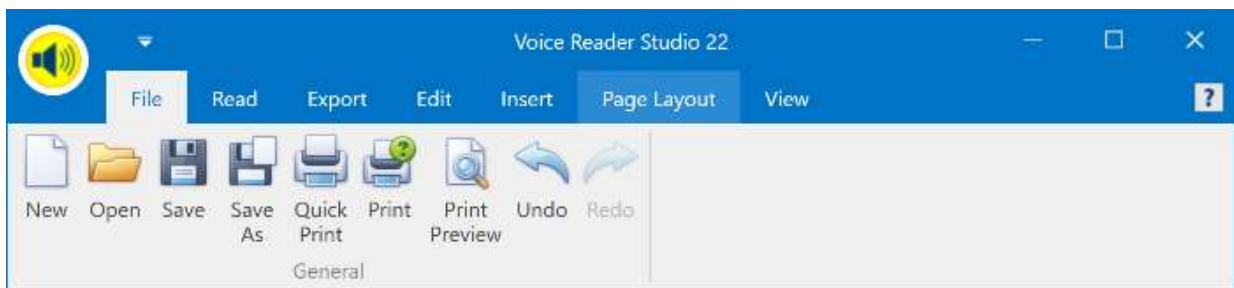
- the universal **Read Button** (chapter 2.1.8), which can be used to start the reading with one click directly from any tab,
- a **Ribbon Command Bar** (chapter 2.1.10) with thematically grouped **tabs** (chapter 2.1.1 to 2.1.7),
- a **Quick Access Toolbar** (chapter 2.1.9) that can be customized individually, and

- a scalable **text field** for entering or inserting the text to be read out or for opening a text file that contains the text to be read out. Many functions can be called directly via the context menu (chapter 2.1.11)



Each button has a **Mouse Over** description that is displayed, when you hover (without clicking) the mouse cursor over the respective button.

2.1.1 File Tab



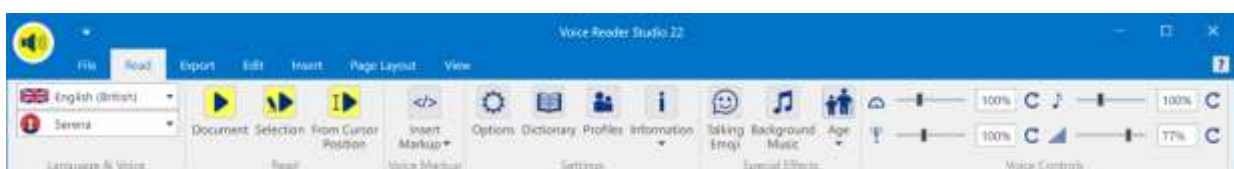
Group: General

- | | |
|---|----------------------------------|
| New: | Create a new document. |
| Open: | Open an existing document. |
| Save or Save As: | Save an open document. |
| Quick Print, Print, Print Preview: | Select one of the print options. |
| Undo or Redo: | Go back or forward one step. |

2.1.2 Read Tab

Here you will find all the functions that are directly related to the speech output and especially to the **reading** function.

NOTE:
More information regarding the different reading options you will find in chapter 2.5.



Group: Language & Voice

Here you specify the **language** that is matching to the text and select the desired **voice**. This voice will be used to read out the text in the Voice Reader Studio 22 editor. You can select between all the languages of Voice Reader Studio 22 that you have purchased and installed.

NOTE:

Accent voices are only available if you have installed additionally to the initial language another Voice Reader Studio language that contains accent voices for that initial language. For example:

If you install Voice Reader Studio 22 French in addition to Voice Reader Studio 22 German, in the language selection "German" will be also available the "Accent Voice Audrey" in the list of the voices.

Group: Read

You can decide what should be read aloud. You can choose between:



Document: Reads aloud the whole text that is in the editor.



Selection: Reads out the text that is marked in the editor.



From Cursor Position: Reads out the text from the current cursor position.

Group: Voice Markup



Voice Markups are control commands that can be inserted directly into the text.

You can use them to make adjustments in the text for:

- Language,
- Voice,
- Speed,
- Pitch,
- Timbre,
- Volume,
- Speaker Profile,
- Pause,
- Pause at end of a sentence,
- Textnormalization (e. g. spelling style, address style, SMS style...)
- or Speaker Style (speaker-dependent).

You can insert a Phonetic Transcription or an Audio file (WAV) and change the emphasis in the sentence by emphasizing or weakening the prosodic binding of words.

Group: Settings



Options: Here you can define the read options.



Dictionary: By creating and maintaining dictionaries, you can adapt the pronunciation to your specific needs.



Profiles: Here you can set up speaker profiles.



Information: Use this button to display information about audio length and selected speak parameters.

Group: Special Effects



Talking Emojis are predefined audio effects such as laughing, throat clearing, coughing, dog barking, phone ringing, wind or engine sounds... that you can use to add emotions to the speech output and create it more lively.

Clicking the Talking Emoji button opens the Emoji Keyboard, from which you can choose a Talking Emoji to insert into the text. Its linked audio will be played when reading aloud the text.


THIS IS HOW IT WORKS:

- **Listen to / pre-listen the Talking Emoji:**
1 x click on the respective emoji icon in the emoji keyboard.
- **Insert Talking Emoji at the current cursor position in the text:**
2 x click on the respective emoji icon in the emoji keyboard.

HOW SHOULD THE TALKING EMOJI BE DISPLAYED IN THE TEXT?

You can choose how you want the talking emoji to be displayed in the text: as an **image** (to do this, activate the option: "Insert emoji as image") or as **voice markup via text** (uncheck the option: "Insert emoji as image").



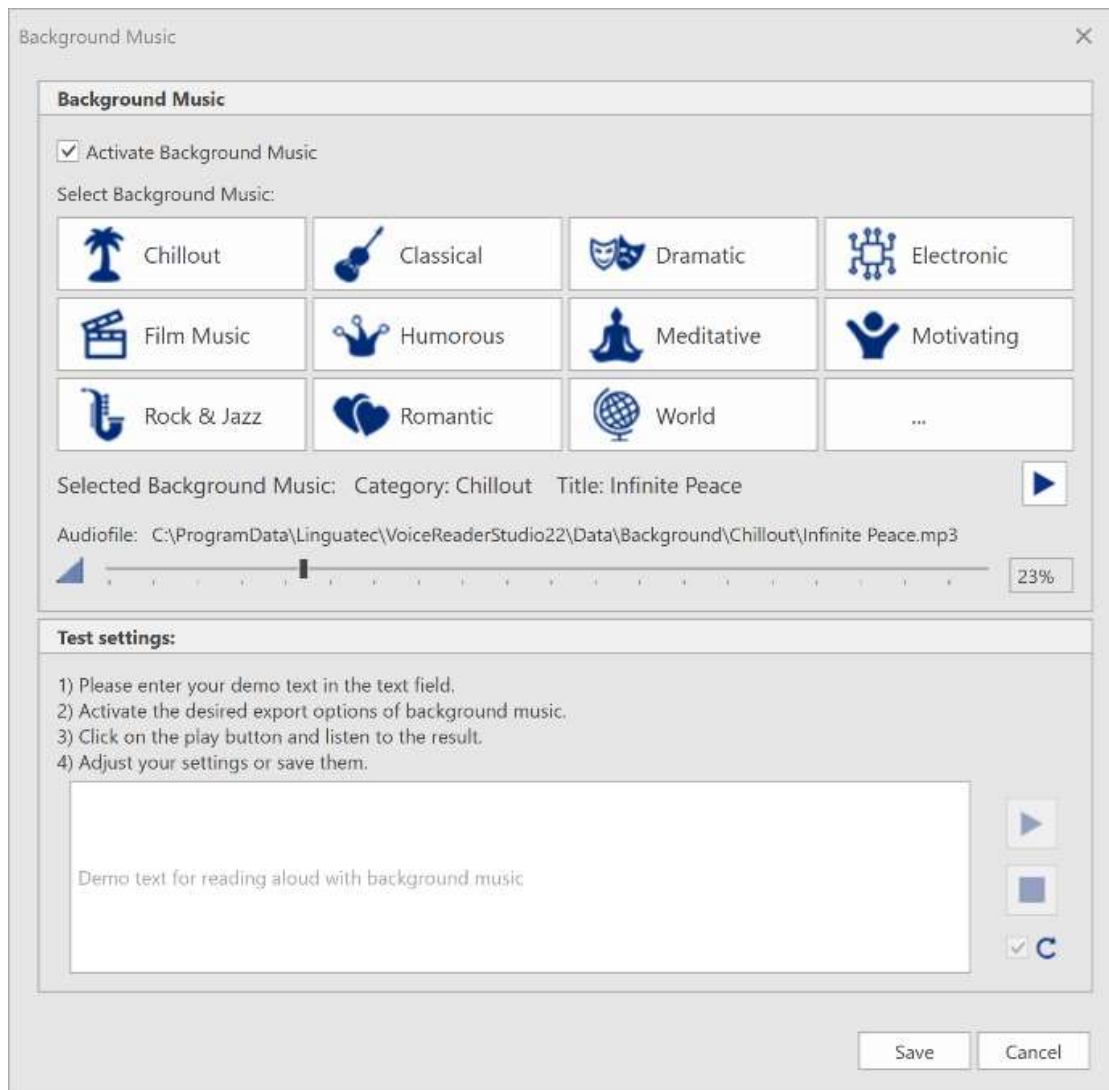
 The **Background Music** button enables you to manage the settings of the background music. You can select here the music, its volume, test it and decide if you want to activate or deactivate the possibility to play the music together with the voice output of your text.

WHAT BACKGROUND MUSIC CAN BE SELECTED?

As background music, you can either select tracks from the music genres included with Voice Reader Studio 22 (e. g. Chillout, Classical, Motivating...), or an audio file from your own music collection. This must be freely accessible and the application or user must have the necessary rights to read the audio file (read access).

THE FOLLOWING AUDIO FORMATS ARE SUPPORTED:

*.mp3; *.mpeg3; *.wav; *.wave; *.flac; *.fla; *.aiff; *.aif; *.aifc; *.aac; *.adt; *.adts; *.m2ts;
*.mp2; *.3g2; *.3gp2; *.3gp; *.3gpp; *.m4a; *.m4v; *.mp4v; *.mp4; *.mov; *.asf; *.wm;
*.wmv; *.wma; *.mp1; *.avi; *.ac3; *.ec3



THIS IS HOW IT WORKS:

1. Reading aloud WITH background music

- Step 1: **Activate background music**
Check the box in front of "Enable background music".
- Step 2: **Select titles for background music**
- Titles from the Voice Reader background music library:
Click on one of the buttons with predefined music genres (e.g. Chillout, Classical, Motivating...) and select a title.
 - Audio file you have saved on your computer (assumes you have access to it and it is not locked).
Click the last button on the bottom right (with the three dots). The explorer display will open. Change to the path where the audio file you want is located and select it.
- Step 3: **Test background music (optional)**
After having activated the background music and selected the title, you can listen to the title separately, adjust the volume, enter a demo text and listen to the result of the voice output together with the

background music. You could select another title, change the volume or change the demo text.

Step 4: **Save settings**

If you are satisfied with the settings and want to apply them, click "Save".

2. Reading aloud WITHOUT background music

Step 1: **Deactivate background music**

Uncheck the box in front of the option "Enable background music" or check that it is disabled.

Step 2: **Save settings**

Click "Save" to apply the change.

TIPS:

TESTING THE BACKGROUND MUSIC SETTINGS:

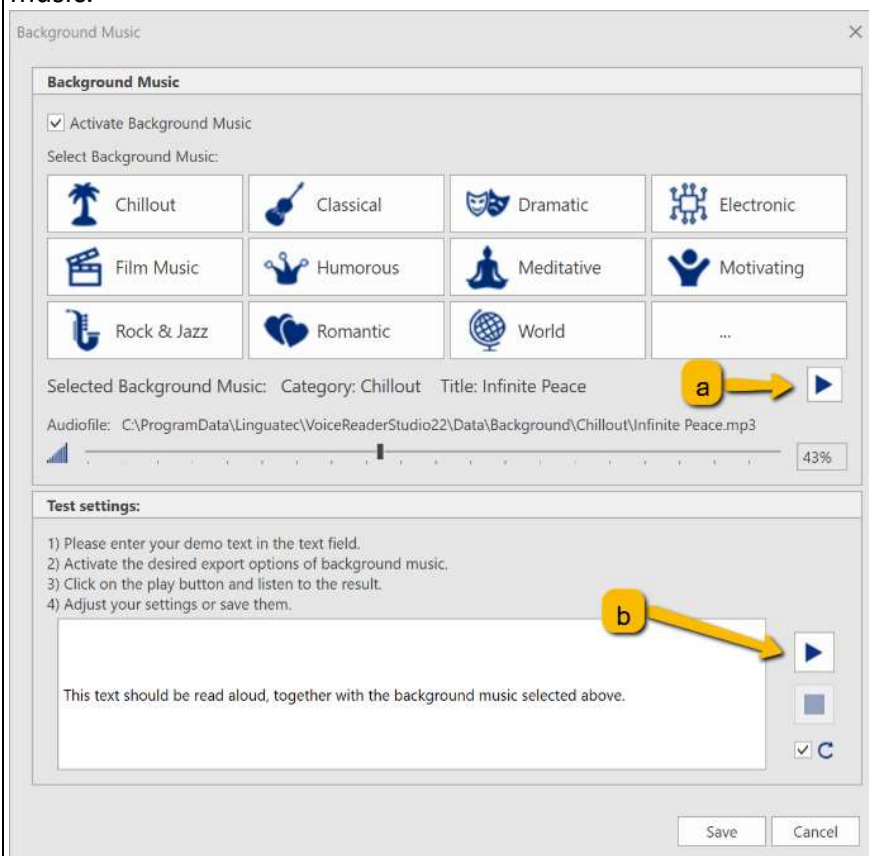
a) Sound preview of the audio track itself:

Section **Background Music**: Select the desired audio file and click the play button right next to the title of the selected background music.

b) Testing the track selection and the volume together with the text to be read:

Section **Background Music**: Select the audio file and volume.

Section **Test settings**: Enter a demo text in the text window. Click on the play button on the right side of it to start reading the demo text aloud together with the selected background music.



IF THE PLAY BUTTON IS NOT ACTIVE:

The play button is only active if:

- the background music option is enabled,
- an audio file has been selected
- there is a text in the text window.

IF THERE IS ALREADY A TEXT IN THE TEXT WINDOW:

If you had previously selected a text in the Voice Reader Studio 22 editor, it will automatically be copied into the text window. You can test with it or enter a different text.

HOW TO ADJUST THE PLAYBACK VOLUME OF THE BACKGROUND MUSIC:

The playback volume can be adjusted using the slider in the Background Music window. The volume can also be adjusted directly in the reading bar of Voice Reader Studio that is shown while reading aloud.



Voice Age:

Choose between different predefined age settings of your voice with just one click.

The different age levels change the pitch and sound size of the voice.

The following age levels can be selected:

Younger 1

Younger 2

Standard

Older 1

Older 2

Group: Voice Controls

Voice Reader Studio 22 offers 4 different voice controls to adjust the voice.



Speed




Pitch



Timbre and



Volume

They can be conveniently adjusted individually via the slider or reset via a refresh button  if required. Alternatively, the desired value can also be entered numerically.

NOTE:

Special Effect „Age“:

The setting of “Age” (Group „Special Effects“) resets the manually adjusted voice control settings of Pitch and Timbre. The associated age settings are automatically applied.

Voice Markup „Style“:

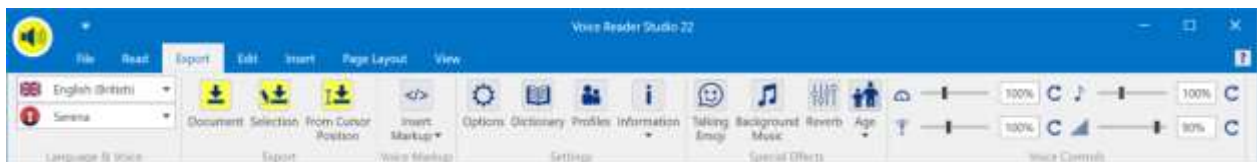
When you change the voice style of your voice from normal to forceful or apologetic (via the Voice Markup "Style"), the voice sliders of speed, pitch, and volume cannot be adjusted manually. The associated voice style settings are automatically applied. Per reading unit, a maximum of one style change is possible. If in the options has been selected “by sentence” for the setting of "Reading and marking", the selected style via voice markup will be applied until the end of the sentence. If it has been selected "by paragraph", the style is retained until the end of the paragraph.

2.1.3 Tab Export

On the Export tab you will find all the functions that are available in the context of the speech output and especially for the export into an audio file.

NOTE:

For more information regarding the export options, please see Chapter 2.6.



Group: Language & Voice

Here you specify the **language** and the desired **voice**. The audio file will be generated with the selected voice. Available are all the Voice Reader Studio languages that you have purchased and installed.

NOTE:

Accent Voices will be listed only under voices, if you have installed an additional language to the current that contains accent voices for the language.

For example: If you install Voice Reader Studio 22 French in addition to Voice Reader Studio 22 German, the "Accent voice Audrey" will also be available to you when you select "German".

Group: Export

Select which text you want to export. Available are the options



Document: Exports all text that is in the editor.



Selection: Exports the selected text



From Cursor Position: Exports the text from the current cursor position.

Group: Voice Markup



Voice Markups are control commands that can be inserted directly into the text.

You can use them to adjust the text in regard of:

- Language,
- Voice,
- Speed,
- Pitch,
- Timbre,
- Volume,
- Speaker Profile,
- Pause,
- Pause at end of a sentence,
- Textnormalization (e. g. spelling style, address style, SMS style...)
- or Speaker Style (speaker dependent).

You can insert a Phonetic Transcription or an Audio file (WAV) and change the emphasis in the sentence by emphasizing or weakening the prosodic binding of words.

Group: Settings



Options: Here you can define the export options.



Dictionary: By creating and maintaining dictionaries, you can adapt the pronunciation to your specific needs.



Profiles: Here you can set up speaker profiles.



Information: Use this button to display information about audio length and selected speak parameters.

Group: Special Effects



Talking Emojis are predefined audio effects such as laughing, throat clearing, coughing, dog barking, phone ringing, wind or engine sounds... that you can use to add emotions to the speech output and create it more lively.

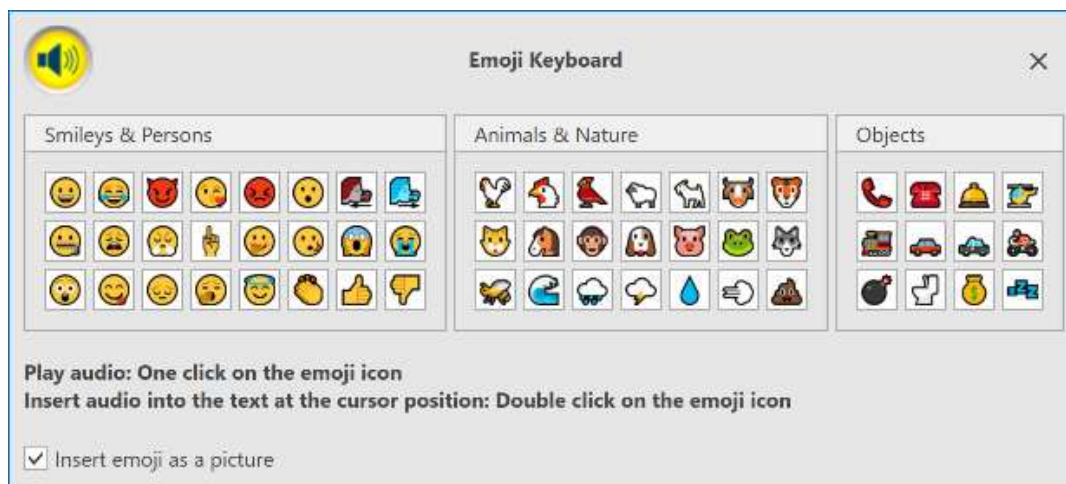
Clicking the Talking Emoji button opens the Emoji Keyboard, from which you can choose a Talking Emoji to insert into the text. Its linked audio will be added when exporting the text.

THIS IS HOW IT WORKS:

- **Listen to / pre-listen the Talking Emoji:**
1 x click on the respective emoji icon in the emoji keyboard.
- **Insert Talking Emoji at the current cursor position in the text:**
2 x click on the respective emoji icon in the emoji keyboard.

HOW SHOULD THE TALKING EMOJI BE DISPLAYED IN THE TEXT?

You can choose how you want the talking emoji to be displayed in the text:
as an **image** (to do this, activate the option: "Insert emoji as image") or
as **voice markup via text** (uncheck the option: "Insert emoji as image").



The **Background Music** button enables you to manage the settings of the background music. You can select here the music, its volume, test it and decide if you want to activate or deactivate the possibility to play the music together with the voice output of your text.

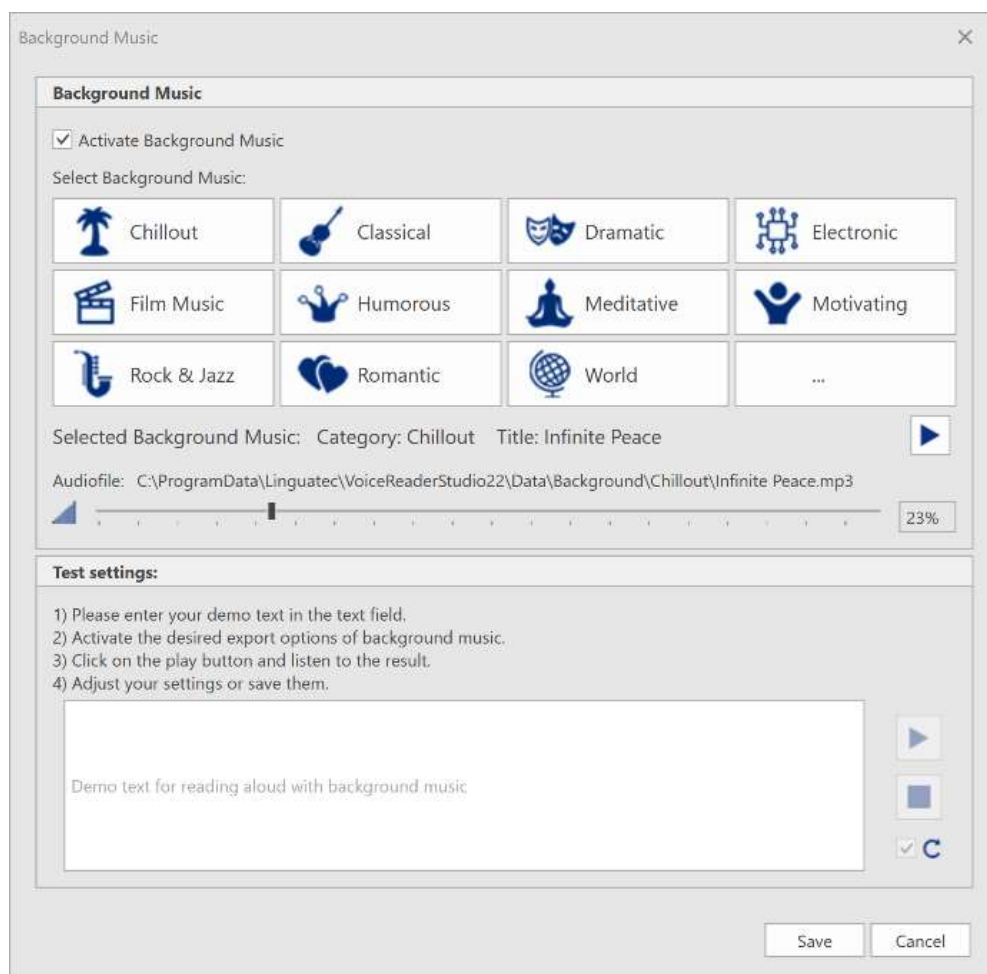
WHAT BACKGROUND MUSIC CAN BE SELECTED?

As background music, you can either select tracks from the music genres included with Voice

Reader Studio 22 (e. g. Chillout, Classical, Motivating...), or an audio file from your own music collection. This must be freely accessible and the application or user must have the necessary rights to read the audio file (read access).

THE FOLLOWING AUDIO FORMATS ARE SUPPORTED:

*.mp3; *.mpeg3; *.wav; *.wave; *.flac; *.fla; *.aiff; *.aif; *.aifc; *.aac; *.adt; *.adts; *.m2ts; *.mp2; *.3g2; *.3gp2; *.3gp; *.3gpp; *.m4a; *.m4v; *.mp4v; *.mp4; *.mov; *.asf; *.wm; *.wmv; *.wma; *.mp1; *.avi; *.ac3; *.ec3



THIS IS HOW IT WORKS:

1. Reading aloud WITH background music

- Step 1: **Activate background music**
Check the box in front of "Enable background music".
- Step 2: **Select titles for background music**
a) Titles from the Voice Reader background music library:
Click on one of the buttons with predefined music genres (e.g. Chillout, Classical, Motivating...) and select a title.

b) Audio file you have saved on your computer (assumes you have access to it and it is not locked).

Click the last button on the bottom right (with the three dots). The explorer display will open. Change to the path where the audio file you want is located and select it.

Step 3: **Test background music (optional)**

After having activated the background music and selected the title, you can listen to the title separately, adjust the volume, enter a demo text and listen to the result of the voice output together with the background music. You could select another title, change the volume or change the demo text.

Step 4: **Save settings**

If you are satisfied with the settings and want to apply them, click "Save".

2. Reading aloud WITHOUT background music

Step 1: **Deactivate background music**

Uncheck the box in front of the option "Enable background music" or check that it is disabled.

Step 2: **Save settings**

Click "Save" to apply the change.

TIPS:

TESTING THE BACKGROUND MUSIC SETTINGS:

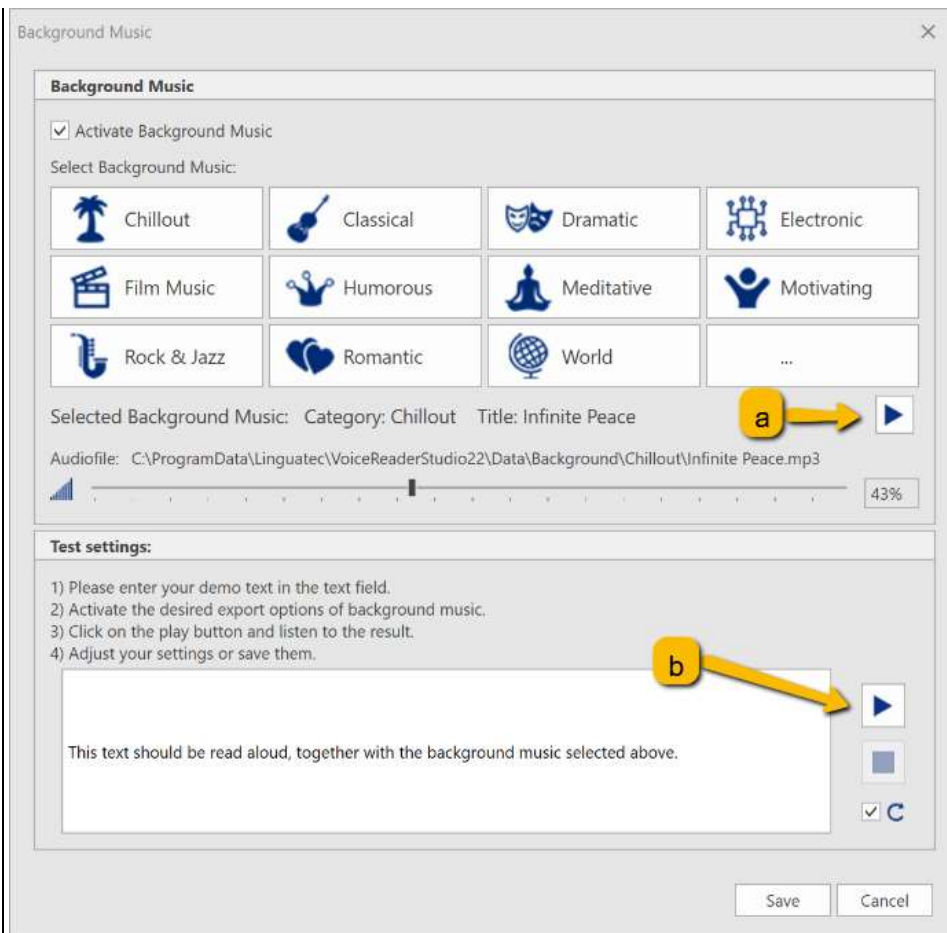
a) Sound preview of the audio track itself:

Section **Background Music**: Select the desired audio file and click the play button right next to the title of the selected background music.

b) Testing the track selection and the volume together with the text to be read:

Section **Background Music**: Select the audio file and volume.

Section **Test settings**: Enter a demo text in the text window. Click on the play button on the right side of it to start reading the demo text aloud together with the selected background music.



IT THE PLAY BUTTON IS NOT ACTIVE:

The play button is only active if:

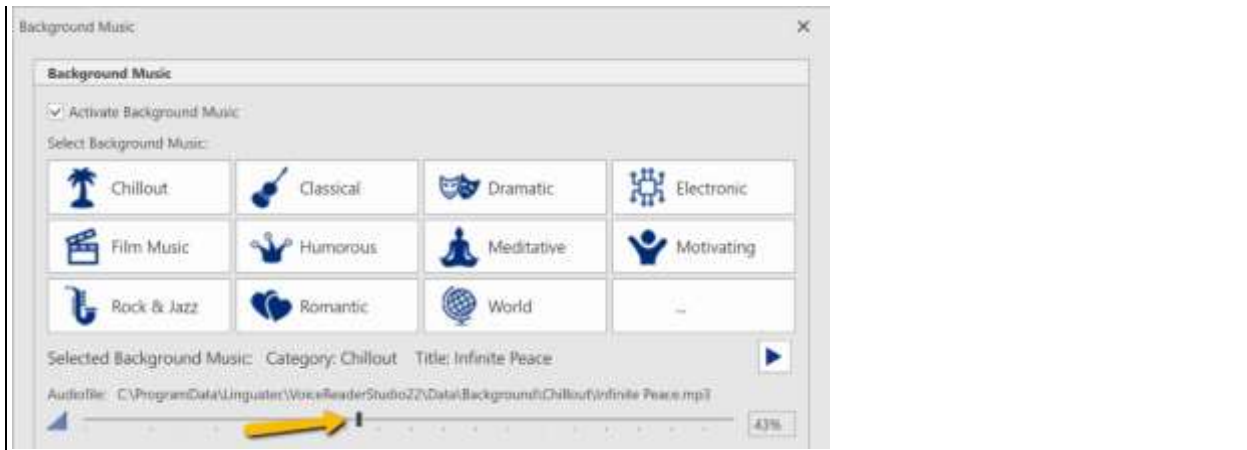
- the background music option is enabled,
- an audio file has been selected
- there is a text in the text window.

IF THERE IS ALREADY A TEXT IN THE TEXT WINDOW:

If you had previously selected a text in the Voice Reader Studio 22 editor, it will automatically be copied into the text window. You can test with it or enter a different text.

HOW TO ADJUST THE PLAYBACK VOLUME OF THE BACKGROUND MUSIC:

The playback volume can be adjusted using the slider in the Background Music window. The volume can also be adjusted directly in the reading bar of Voice Reader Studio that is shown while reading aloud.



The option **REVERB** allows to assign a reverb to the exported audio file. The level of reverberation can be adjusted continuously.

HOW IT WORKS:

ACTIVATE REVERB

Step 1: **Activate Reverb**

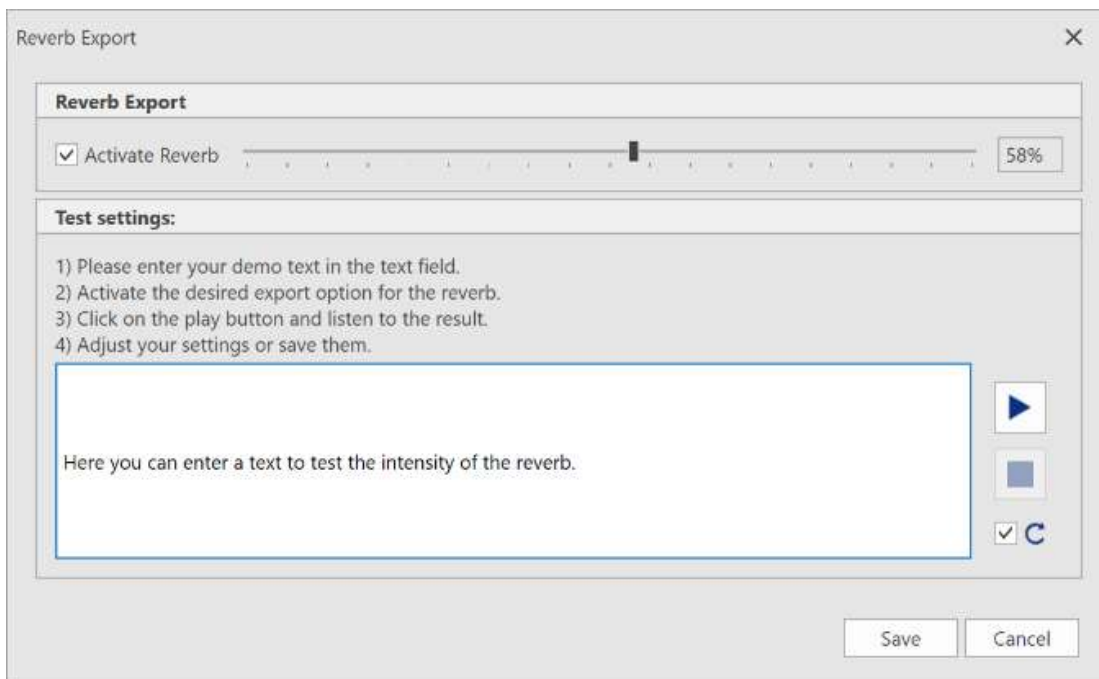
Click on the button Reverb in the group Special Effects and activate the option Activate Reverb in the window Reverb Export

Step 2: **Test and set the reverb intensity**

Please enter a text in the area "Test Settings", to test the reverb intensity. Start the play button on the right side and change the intensity of the reverb via the slider as desired.

Step 3: **Save settings**

Save your settings by clicking on the Save button.



DEACTIVATE REVERB

Step 1: Deactivate Reverb

Click on the **Reverb** button in the group **Special Effects** and check that in the window **Reverb Export** the option **Activate Reverb** is deactivated.

Step 2: Save settings

Save your settings by clicking on the **Save** button.



Voice Age:

Choose between different predefined age settings of your voice with just one click.

The different age levels change the pitch and sound size of the voice.

The following age levels can be selected:

Younger 1

Younger 2

Standard

Older 1

Older 2

Group: Voice Controls

Voice Reader Studio 22 offers 4 different voice controls to adjust the voice.



Speed




Pitch



Timbre and



Volume

They can be conveniently adjusted individually via the slider or reset via a refresh button  if required. Alternatively, the desired value can also be entered numerically.

NOTE:

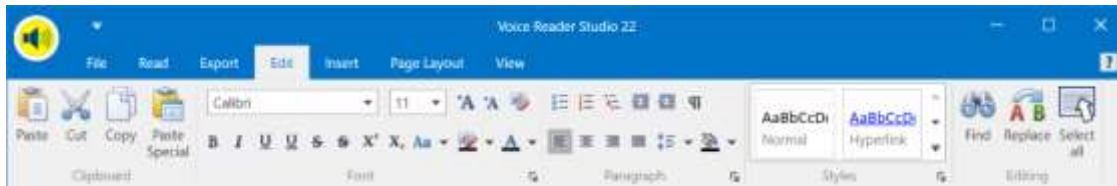
Special Effect „Age“:

The setting of **“Age”** (Group „Special Effects“) resets the manually adjusted voice control settings of **Pitch** and **Timbre**. The associated age settings are automatically applied.

Voice Markup „Style“:

When you change the voice style of your voice from normal to forceful or apologetic (via the Voice Markup "Style"), the voice sliders of speed, pitch, and volume cannot be adjusted manually. The associated voice style settings are automatically applied.

2.1.4 Edit Tab



Group: Clipboard

This group contains buttons for inserting text from the clipboard, cutting or copying text, or inserting content.

Group: Font

Font, font style, font size, font color or text effects can be configured here.

Group: Paragraph

Determine indents and spacing, line and page breaks or tab stops in your text.

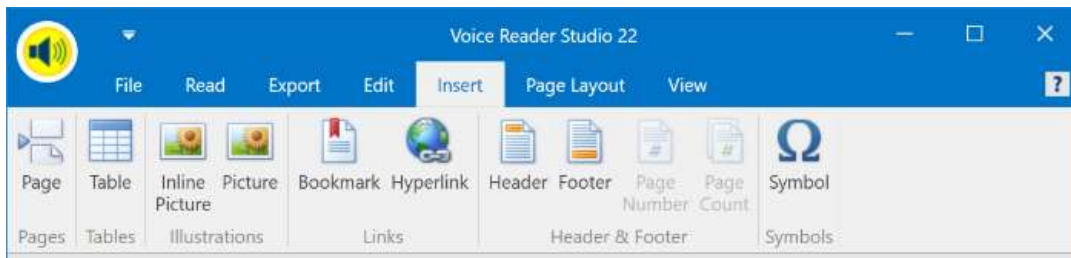
Group: Styles

In this group, you can choose your style template.

Group: Editing

This contains the buttons to search text (Button: **Search**), replace text (Button: **Replace**), or select text (Button: **Select all**).

2.1.5 Insert Tab



Group: Pages

Insert a page break in order to start a new page from the cursor's current position.

Group: Tables

Create a table and insert it into your text.

Group: Illustrations

When you want to insert a picture or an inline picture into the text, the illustrations group contains the necessary buttons.

Group: Links

Create bookmarks to help you navigate larger documents. You can also insert hyperlinks.

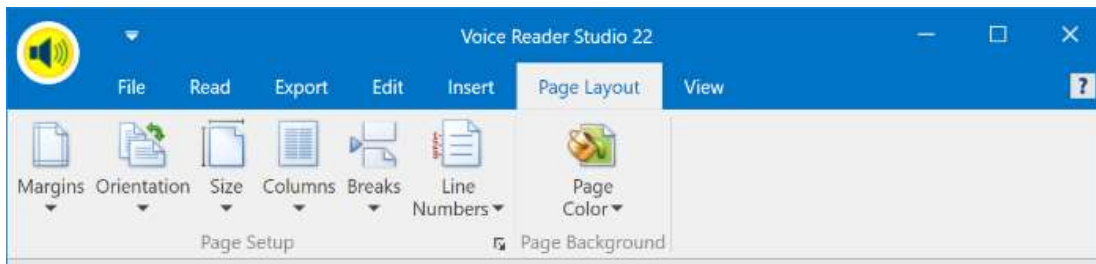
Group: Header & Footer

The tools to create and/or organize headers and footers can be found in the eponymous group.

Group: Symbols

Symbols that are not available on your keyboard can be called up and inserted from here.

2.1.6 Page Layout Tab



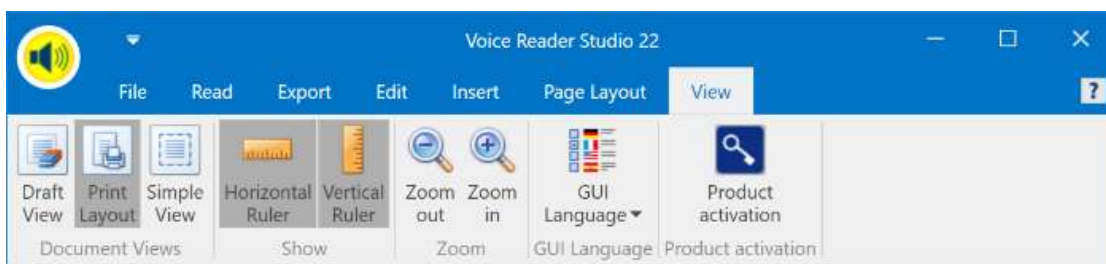
Group: Page Setup

This group contains all the features that facilitate setting up a page (margins, page layout, size, columns, breaks, line numbers).

Group: Page Background

To select the page background color, click the **Page Color** button.

2.1.7 View Tab



Group: Document Views

Choose one of the possible views: **Draft View**, **Print Layout** or **Simple View**

Group: Show

Show or hide a **horizontal** and/or **vertical ruler**.
The availability depends on the selected document view.

Group: Zoom

The **Zoom out** and **Zoom in** buttons let you adjust the zoom factor of the text area.

Group: GUI Language

Choose the language of Voice Reader Studio user interface from the **GUI Language** list.

Group: Product Activation

You can manually start the activation dialogue manually via the button **Product Activation**.



NOTE:

If activation is required, the activation dialogue will be started automatically!

VIEW STATUS OF ACTIVATION:

If you click **Activate now**, the product activation window opens with a tabular view of all languages.

Column Product: Here you will find a list of all Voice Reader Studio languages.

Column Status: In this column you can see if the product is installed, activated or locked.

NOT INSTALLED means:

Voice Reader Studio has not been installed in the respective language.

ACTIVATION PERIOD STILL X DAYS means:

The respective language is installed. Activation is still pending. There are x days left in which you can use Voice Reader Studio without activation. You can activate now or must do so in X days at the latest, for to use Voice Reader Studio.

ACTIVATED means:

The respective language is installed. Nothing further needs to be done. The application has been successfully activated. Close the window via the Exit button.

LOCKED UNTIL ACTIVATION / LOCKED UNTIL ACTIVATION means:

The respective language is installed. There is no valid activation. Perform the activation if you want to use Voice Reader Studio 22.

2.1.8 Further Tabs

Depending on the file that you opened and which style templates it contains, other tabs may be displayed in Voice Reader Studio.

For example:

Design (to draw or adjust table styles such as shading or frames)

Layout (to adjust table properties, especially the administration and arrangement of lines and columns)

2.1.9 Read Button



You can start the reading from any tab, by clicking on the **Voice Reader Studio Read Button** at the top left of the application window. This button starts the reading of the entire text. If a section of the text has been selected, only the selection is read aloud.

When reading is started via the Voice Reader Studio Read Button, it will use the reading options set on the **Read** Tab.

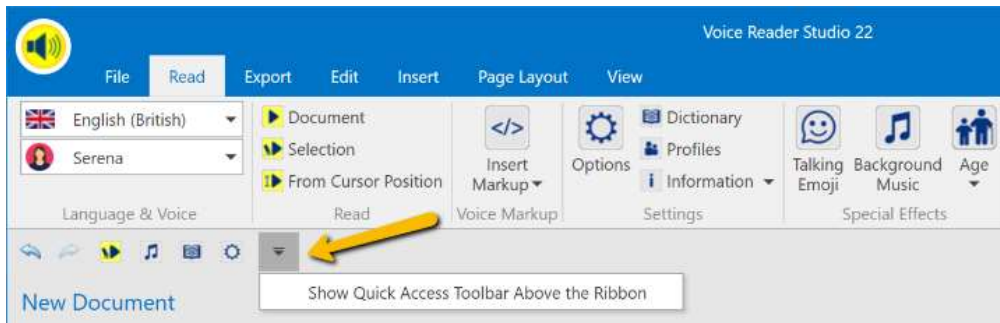
2.1.10 Quick Access Toolbar

The buttons on the Quick Access toolbar always remain visible and are therefore a useful tool for working rapidly and efficiently.

CUSTOMISE THE VIEW:

Depending on the personal preference, the toolbar can be positioned either above or below the ribbon.

Click on the downward-pointing arrow in the ribbon

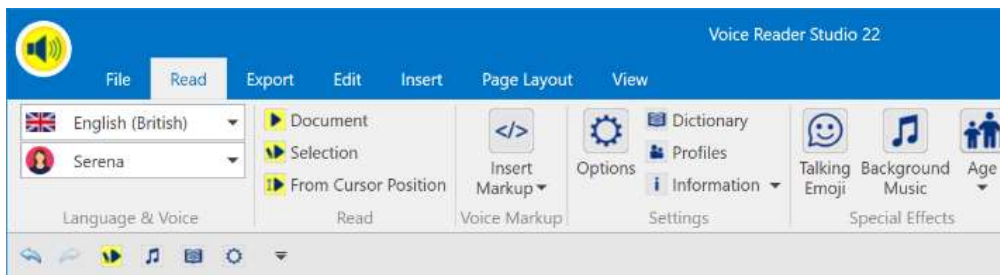


or alternatively right-click in an empty area of the ribbon and select one of the two options:

- **Show Quick Access Toolbar above the ribbon.**
- **Show Quick Access Toolbar below the ribbon**



Quick Access Toolbar above the ribbon



Quick Access Toolbar below the ribbon

Further elements can be added by right-clicking on the respective icon in the ribbon and selecting the option **Add to Quick Access Toolbar**.

NOTE:

The reading options

Language,

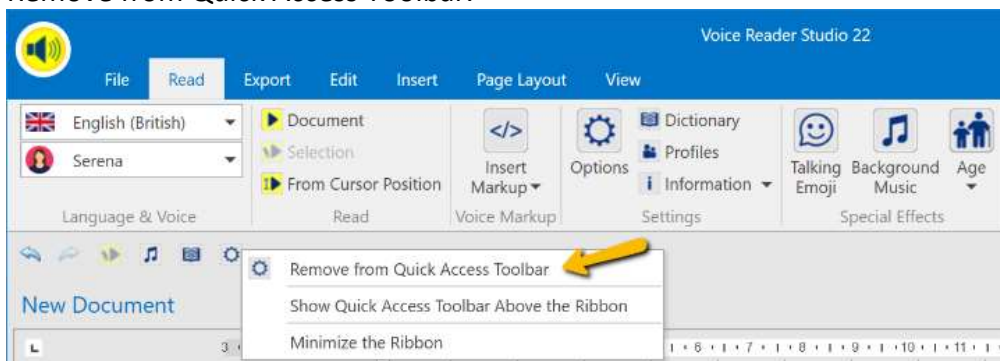
Voice,

Speed,

Pitch,

Timbre and Volume cannot be added to the Quick Access Toolbar

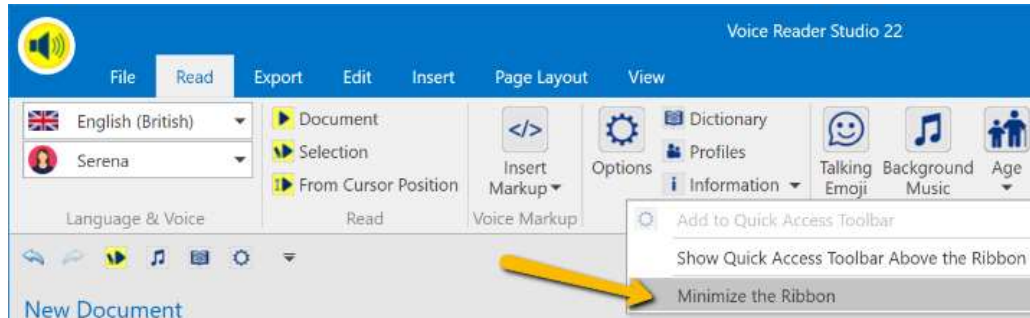
To remove existing items, right-click on an item in the Quick Access Toolbar and select Remove from Quick Access Toolbar.



2.1.11 Customizing the Multi-Function Ribbon

MINIMIZE MULTI-FUNCTION RIBBON:

If you do not want to display the whole size of the Voice Reader Studio multi-function ribbon, e.g. to save screen space, you can hide it by selecting **Minimize the Ribbon**. The option appears when you right-click a vacant area on the multi-function ribbon.



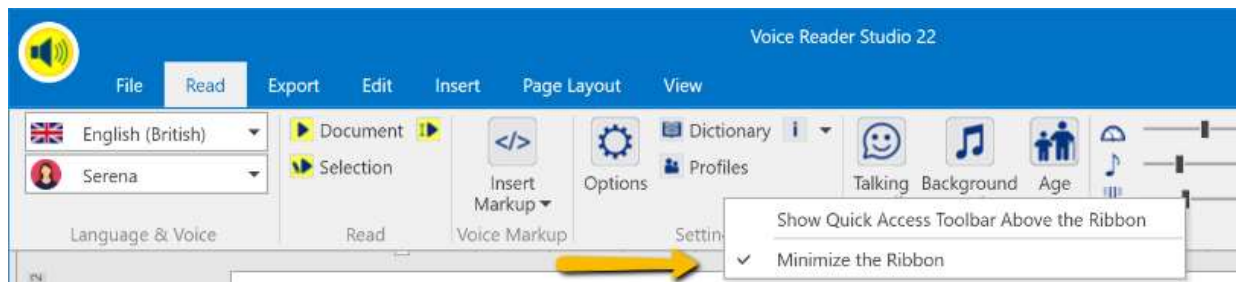
When the multi-function ribbon is minimized, tabs can still be activated by clicking on them. Once a command has been selected, they will automatically be minimized again.



Multi-function ribbon minimized

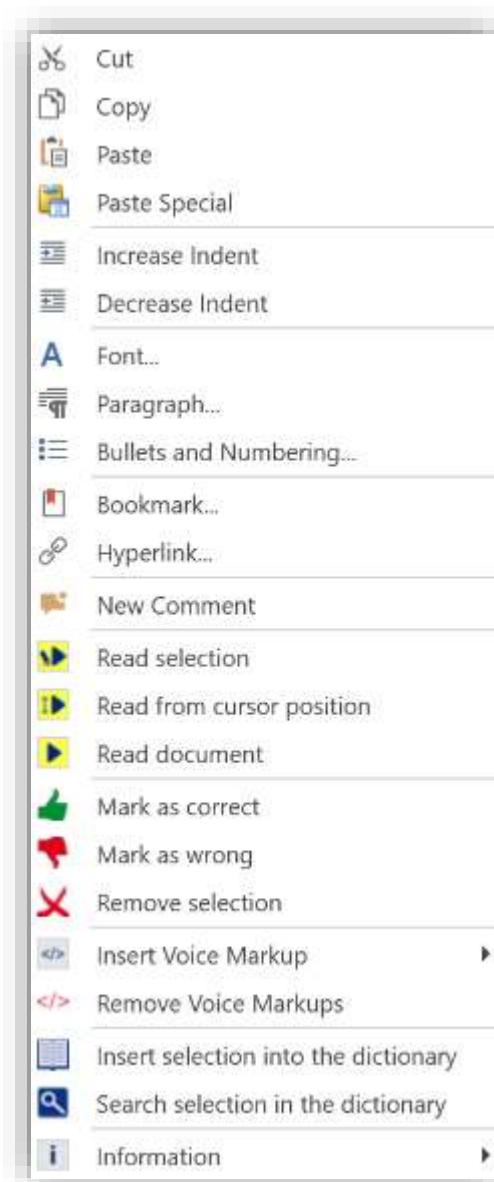
MAXIMISE MULTI-FUNCTION RIBBON:

To maximize the multi-function ribbon, please switch to one of the tabs, right-click a vacant area,



and remove the checkmark next to **Minimize the Ribbon**.

2.1.12 Context Menu



The **context menu** can be opened by right-clicking on any point in the text. Important functions are thus always and quickly at your disposal while editing longer documents.

The context menu includes all commands that are beneficial and applicable at that point. Non-available commands are displayed as inactive.

Example:

When no word or sentence has been selected in the text, the option **Read selection** will be greyed out in the context menu, and therefore cannot be executed.

To be able to select this option, the right mouse click must be made while the cursor is in the area of a text marker.

The context menu also lets you set bookmarks. This allows you to return quickly to certain points in the text. This is especially beneficial when working with long documents or when reading eBooks. Place the cursor on the desired position, select the **Bookmark** option from the context menu, and enter a name for the bookmark. This name must begin with a letter, but may also contain numerals. Spaces in the name are not permitted. When done, click on the **Add** button. To return to the bookmark position at a later time, start the **Bookmark** function from the

context menu, and select the desired **Bookmark Name** from the list. Click on the **Go To** button to switch to the bookmark position in the text.

NOTE:

Please note that the file formats .epub and .txt do not support the saving of bookmarks. As an alternative, choose file formats such as .docx, .doc, .rtf, .odt, .html or .mht to save bookmarks beyond the restart of the application.

2.2 Multi-Language Voices (ML)

The Voice Reader Studio software is available for many languages.

The voices designated with (ML) are defined as **Multi-Language Voices** and have additional language capabilities besides the main language.

Example:

When reading with the German voice Anna-ML (main language = German) and using the Voice Markup “Language (only for ML voices)”, a non-German pronunciation can be assigned to individual terms in the text to be read. Available in this case are British English, French, Italian and Spanish pronunciation. However, in comparison to the main language, the linguistic competence of these additional languages is limited. To read an entire text in a different language, a main voice in that language is required.

When using a Multi-Language Voice, language assignment is performed via the Voice Markup **Language** (Chapter 2.7.1.1.), at the desired point in the text, or for the desired term.

Example:

A German text to be read contains an English name. With the reading language option set to German, select the English expression. Then, using the option **Insert Voice Markup**, select the setting **British English** in the **Language** area.

OVERVIEW:

A table showing the available Multi-Language voices and their additional linguistic abilities can be found in the Annex of this manual in chapter 7.3.

NOTE

The additional linguistic abilities of a ML voice are only available via the **Voice Markup** function.

Dictionary entries cannot be made in the additional languages.

The reading language cannot be switched to the additional language abilities via the options menu.

Compared to the main language, the additional language capabilities are limited and can only be used for single words or short sequences.

Reading an entire text in another language will require the purchase of a license of an additional Voice Reader Studio language pack.

2.3 Accent Voices

For some languages Voice Reader Studio 22 supports **Accent Voices**.

An Accent Voice is a voice of another native language. It reads aloud in the selected language with its native accent. In this way, for example, German can be read aloud with a French accent.

2.3.1 Prerequisite

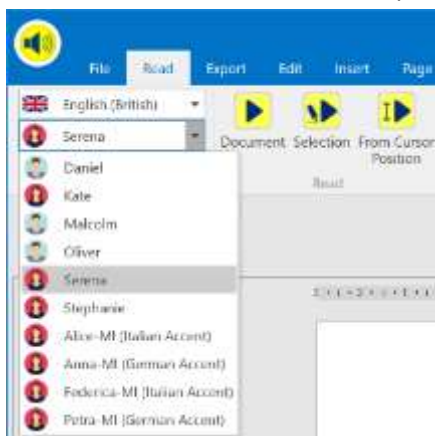
The respective language packages must be installed together on the same computer. IF ONLY ONE VOICE READER STUDIO LANGUAGE HAS BEEN INSTALLED, NO ACCENT VOICES ARE AVAILABLE.

For example: To be able to select for the language German an accent voice with a French accent, Voice Reader Studio German and Voice Reader Studio French must be installed. In this case, when the language German is selected, the French voice Audrey ML is available as an accent voice. She reads out German with a French accent.

2.3.2 Select Accent Voice

Select the desired Accent Voice in the group: Language & Voice (either on the Read tab or on the Export tab) or alternatively in the Options from the voice list.

Accent Voices have the suffix (...accent) in their name. E. g. Alice-ML (Italian Accent)



A **list** of all available Accent Voices you can find in **Annex 7.4** of this manual.

2.4 Opening and editing documents

2.4.1 Supported file formats

The following file formats are supported by Voice Reader Studio and can be loaded directly in the application window using the **File - Open** command:

- Text files (*.txt)
- RTF files (*.rtf)
- Word files (*.docx, *.doc)
- HTML files (*.htm, *.html)
- MHT files (*.mht)
- Epub files (*.epub)
- PDF files (*.pdf)
- ODT files (*.odt)

2.4.2 Opening a file

To open a file, follow these steps:

Switch to the **File** tab and click the **Open** button.

Under **File type**, select the desired format or choose **All supported files**.

Switch to the required folder, click on the file you wish to open, and then confirm your selection by clicking **Open**.

NOTE:

A PDF file that you open in Voice Reader Studio has to be converted into the RTF format first of all. You will receive a message to that effect when loading the PDF file - confirm by clicking OK. Due to the RTF-conversion the graphics of the original PDF cannot be loaded into the editor of Voice Reader Studio.

2.4.3 Inserting or exchanging text via clipboard

You can also insert text from other applications directly via the clipboard.

1. Select the desired text in the other application.
2. Copy the selected text to the clipboard (**CTRL+C** or **Edit - Copy**).
3. Click into the editor window of Voice Reader Studio and paste the copied text using the standard key combination **CTRL+V** (or **SHIFT+INS**). If the editor already contains text that you wish to replace with the new text, select the existing text prior to pasting.

2.4.4 Opening a text via Drag & Drop

You can also open a file in Voice Reader Studio by simply dragging and dropping it into the editor. (Drag & Drop: Click on the file with the mouse, keep the mouse button held down while dragging, release over the new location)

Make sure that the selected file belongs to a supported file type.

2.4.5 Saving text

If you have made changes or inserted text into an open document in the Voice Reader Studio 22 application window, you can save the document. Switch to the **File** tab and select the command

Save, if the document you have edited is to be saved with all changes under the same name and in the same location from which it was opened.

Save As, if you wish to determine and possibly change the name and location of the document. This way, you avoid overwriting with your changes and losing the original version of the document you have edited.

Voice Reader Studio supports saving to the following file formats:

- Text files (* .txt)
- RTF files (* .rtf)
- Word files (* .docx, * .doc)
- HTML files (* .htm, * .html)
- MHT files (* .mht)
- Epub files (* .epub)
- ODT files (* .odt)

2.4.6 Printing text

If you want to print out the text that is in the text editor window of Voice Reader Studio, switch to the File tab and select one of the following commands:

Print, **Quick Print** (this executes the print command immediately, without first bringing up the print dialogue) or **Print Preview**.

2.5 Reading

2.5.1 Preparations

Before starting reading, you should confirm that the desired settings for voice, speed, pitch, timbre, volume, text selection and end of sentence pause have been selected in the **Options** in the **Read** Tab or directly in the ribbon bar. The reading options and voice controls cannot be changed during the reading process.

If you have purchased and installed several language versions of Voice Reader Studio, please also make sure that the correct language has been selected.

2.5.2 Start and stop reading

The **Read Tab** contains the following reading options in the Read Group:

- **Read entire text**



If you want to start the reading of the entire text that is opened in the Voice Reader Studio editor, please click on the **Document** button in the Read group on the Read tab.

- **Read marked text**



Select the part of the text that you wish to have read out and choose **Selection**. Voice Reader Studio will read only your marked text.

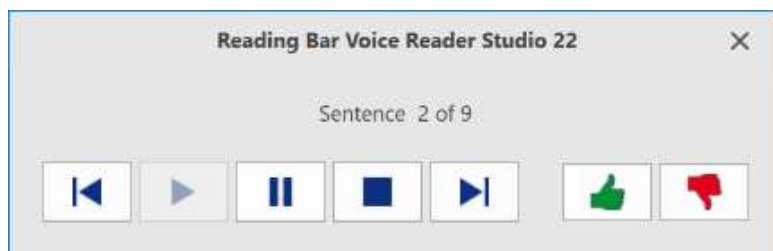
If possible, select only complete sentences, to ensure that Voice Reader Studio can intonate the text correctly.

- **Read text up from the cursor position**





Position the cursor in the text at the point from which reading should be started and click on **From Cursor Position**. With this command, Voice Reader Studio will read the entire text up from the cursor position.

2.5.3 Reading Bar





Once reading has been started, the Voice Reader Studio 22 Reading Bar will open in a separate window. It can be freely moved around the display.

Pause reading: Please press the  **Pause**-button.

Continue reading: Please press the  **Play**-button.

Stop reading: Please press the  **Stopp**-button.

Or you can use the  **Close** window function.

Navigation in the text: The  **Forward**- and  **Backward**-buttons allow you the navigation through the text. You can e. g. jump ahead to the next sentence or go back one sentence.

Depending on the reading unit selected (**Read Tab - Settings group - Options** menu), reading, selecting and navigating the document will be either:

- by word,
- by sentence or
- by paragraph.

Reading by sentence:

If you have selected the option **Read by sentence**, the text to be read will be segmented by sentence. It will be selected and read by sentence.

The Reading bar will display the number of sentences selected for reading (Example: Sentence 2 of 9). The **Forward** and **Reverse** buttons let you move forward or back in the document one sentence at a time.

Reading by paragraph:

If, however, you have chosen **Read by paragraph**, you can navigate the document one paragraph at a time. Selection and reading will be by paragraph.

The segments to be read will be displayed by paragraph (Example: Paragraph 1 of 20). The **Forward** and **Reverse** buttons let you move forward or back in the document one paragraph at a time.



Reading by word:

If **Read by word** has been selected, segmentation of the text will be by word. Selection and reading will be by word.

The Reading Bar will display the number of words selected for reading (Example: Word 3 of 7). The **Forward** and **Reverse** buttons let you move forward or back in the document one word at a time.


In most cases, the preferred method will be to **read by sentence**.

NOTE

Please note that during the reading and while the Reading Bar is displayed, the text cannot be changed, and settings cannot be adjusted. To do either, the Reading Bar must first be closed. This can be done using the Stop button  or the Close function .

Marking text

If you want to edit a text, for example to customize its pronunciation, the Voice Reader Studio Reading Bar allows you to mark sections of text either as good (green), or for editing (red).

In the course of reading, when you click the button  (mark as good), the text in the current selection will be underlined green.

In the course of reading, when you click the button  (mark for editing), the text in the current selection will be underlined red. This allows you to highlight the need to edit the section.

Should you later wish to remove the colored Voice Reader Studio markings, select the text area in question using the mouse, or select the entire text using CTRL+A. Right-click into the editor and select the option **Undo marking** in the context menu.

During Reading

During the reading mode it cannot be changed the voice, pitch, speed, timbre, volume, text marking or end of sentence pause. You must first end playback using the Stop button or the Close function in the Voice Reader Studio Reading Bar, and then make the desired changes to Voice Reader Studio in the **Settings** area of the **Read** Tab.

One-click reading using the Voice Reader Studio 22 Read-Button



You can start the reading from any tab, by clicking on the **Voice Reader Studio Read Button** at the top left of the application window. The entire text loaded in the editor will be read immediately. If a section, sentence or word has been selected in the text, then only the selection will be read.

When reading is started via the Voice Reader Studio Read-Button, it will use the reading options set under the **Read** Tab.

2.6 Exporting Text to an audio file

2.6.1 Preparation

Exporting converts the entire document in the application window, or a section of it that has been selected, to an audio file, which you can subsequently play back through a PC audio player, or transfer to an external medium or device such as an audio CD or an MP3 player. Which format (MP3 or WAV) is used, in what quality, and where the file is saved depends on the corresponding options selected in the **Settings** group of the **Read** Tab. (More information in regard of the options please see **chapter 5**)

2.6.2 Starting export

The following options for exporting to an audio file (wav or mp3) are available in the **Export** group of the **Read** Tab:

- **Export entire text**



To export the entire text to an audio file, click on the **Export Document** button.

- **Export selected text**



If you wish to export only a section of the text, select it. Take care to select only entire words, and if possible, complete sentences. Start the export by clicking on **Export Selection**.

- **Export text from cursor position**



Position the cursor at the desired location in the text, and then click **Export from Cursor Position**. All text from the cursor position to the end of the text will be exported to an audio file.

2.7 Using Voice Markups to customize audio output

With Voice Reader Studio 22 you can produce professionally designed audio output from a text file.

Using **Voice Markups** enables you customizing the pronunciation in many ways.

Voice Markups can be easily inserted at any point in the text, using either

- a) the **Insert Voice Markup** button from the **Voice Markup** group in the **Read** Tab, or
- b) the option **Insert Voice Markup** from the context menu (this can be opened by right clicking on the cursor position in the editor window).

Click on the required Voice Markup (language, voice, speed...), choose the desired settings and confirm by clicking **OK**.

The customized text file can be subsequently **read** and **exported to an audio file** that can be played back independently of Voice Reader Studio.

A setting that has been defined using Voice Markup will remain in effect until it is replaced by the selection of a new Voice Markup.

Exception: Voice markups that only apply to a defined area, for example the

Voice Markup "Pause" applies only for the place where the markup was inserted,

Voice Markup "prosodic binding" applies only for the transition to the following word.

A Voice Markup can either be inserted at the current cursor position or defined for a selected area. The latter case requires setup of a Begin- and an End-Voice-Markup.

NOTE:

If an inserted Voice Markup is manually complemented or changed with incorrect parameter specifications, the affected entry will be interpreted and read as regular source text. You should take care not to damage the markup format when manually editing the text.

Overview of Voice Markup options

- The **Voice** can be customized in many ways and changed at any point in the text.
- Several **Output languages** can be combined within the same document, provided that the languages are installed in Voice Reader Studio 22, or when you are using a Multi-Language (ML) Voice.
- You can adjust reading characteristics such as **Speed, Pitch, Timbre, and Volume** for precisely defined sections of the text.
- You can insert **Speech pauses** of exactly defined duration.
- You can determine the **Length of pause after a reading unit**.

- Voice characteristics and reading language can be saved in various **Speaker profiles**. It enables you to customize easily documents with several speakers.
- Using the **Text Normalization** Voice Markup, you can determine in which style (e. g. spelling, address, SMS mode...) a specific text section is read.
- The **Phonetic Transcription** Voice Markup is useful when you do not want to change the pronunciation of a term in general, but only at a certain point in the text. Simply select the word (or words) to be transcribed, then enter the desired phonetic pronunciation. If you choose the Phonetic transcription Voice Markup without having selected any text, the defined pronunciation will be read in addition to the existing text at the current cursor position.
- You can integrate **external audio files** (e.g., jingles, signal tones or sounds) to be played back at the desired point in the document. WAV files are supported at 16 Bit, 22050 Hz, mono. If you are using the Word or PowerPoint plugin, you will find the corresponding settings in the **Voice Reader Studio 22** Tab, **Voice Markup** group, using the command **Insert Voice Markup**.
- You can choose a **speaking style** between normal, forceful or apologetic.
- You can weaken or emphasise the **prosodic binding** to the following word to influence the intonation in the sentence.

Mouse over:

If you place the mouse pointer on the respective markup in the Voice Markups list (without clicking), you will find explanations and informations for each entry.

If you are using the Word or PowerPoint plugin, you will find the corresponding settings in the **Voice Reader Studio** Tab, in the **Voice Markup** group, using the command **Insert Voice Markup**.

2.7.1 Adjusting voice and language with Voice Markups

The following voice markups allow you to customize voice characteristics and language settings:

- Voice (for ML voices only)
- Voice & Language
- Speed
- Pitch
- Timbre
- Volume

These can be easily inserted using the **Insert Voice Markup** button on the **Read** Tab, or by using the function of the same name in the context menu.

The Voice Markups to customize voice and language characteristics can be applied to a text selection, in which case they will affect only that selection. When they are inserted at a cursor position, they remain in effect until they are replaced by the setup of a new Voice Markup, or when the end of text is reached.

NOTE

You can combine and save several voice characteristics in a **Speaker profile**.
See Chapter 2.7.3

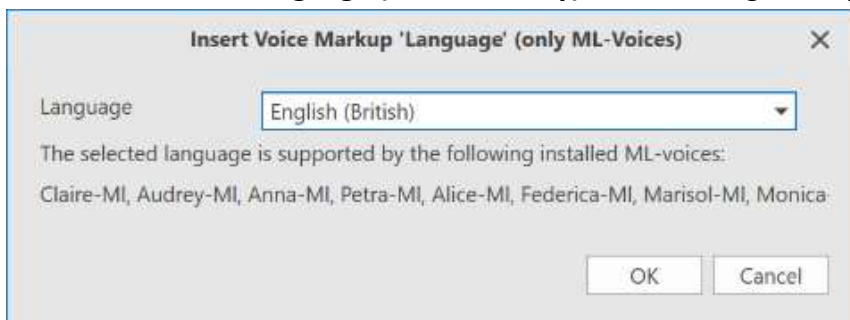
2.7.1.1 Change reading language (ML voices only) for a single voice

When using a Multi-Language (ML) Voice (see chapter 2.2), you can assign any additional language that it supports to a term with **Voice Markup Language (ML voices only)**.

First make sure that the language you have installed for Voice Reader Studio includes a ML voice, and that this has been selected in the reading options in the **Voice** area.

Language (ML voice only) <Lang=XX/>

The command for **Language (ML voice only)** is called Lang. Example <Lang=eng/>



Select the desired additional language capability of your ML voice from the drop-down menu of the **Insert Voice Markup** button.

NOTE

The command can only be executed for the respective supported languages of your selected ML voice!

Sehr geehrte Fahrgäste, bitte beachten Sie, dass auf Grund von Gleisarbeiten der Regionalzug nach <Lang=eng/>Maidstone<Lang=END_eng/> 10 Minuten verspätet eintreffen wird.

*In this case, a German ML-Voice was selected in the reading characteristics, and using the Voice Markup **Language**, the term 'Maidstone' was assigned the English (British) pronunciation.*

2.7.1.2 Change reading language via Voice Markup if several languages are installed

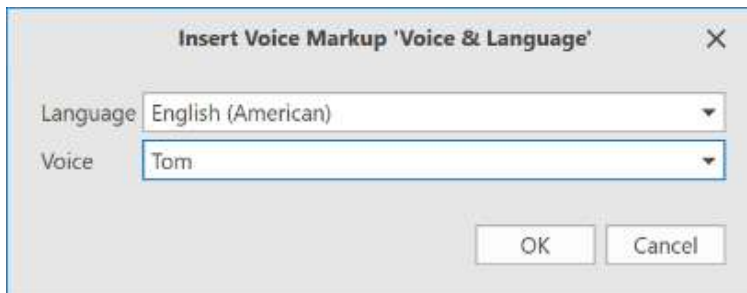
In the case of multi-language texts, if you have purchased and installed several language packs for Voice Reader Studio 22, you can switch the reading language in the line **Language** by selecting the **Voice Markup Voice & Language**. This will show you the available languages which you can choose from. Once you have made your selection, you will choose the reading voice for the selected language.

The **Voice Markup Voice & Language** for selecting the reading language can be applied to a text selection, in which case it will affect only the selected text.

When inserted at a cursor position, it will remain in effect until it is replaced by the setup of a new Voice Markup, or when the end of text is reached.

Voice & Language <Voice=XX/>

The command for **Voice & Language** is called Voice. Example: <Voice=Tom/>



Please press “one” for further information. <Voice=Petra/>Wenn Sie weitere Informationen wünschen, drücken Sie bitte die „Eins“. <Voice=END_Petra/>

*In this example, German and US English were installed in Voice Reader Studio 22. A US English voice is selected in the reading options, and **Voice Markup Voice & Language** was used to assign a German voice to the second sentence.*

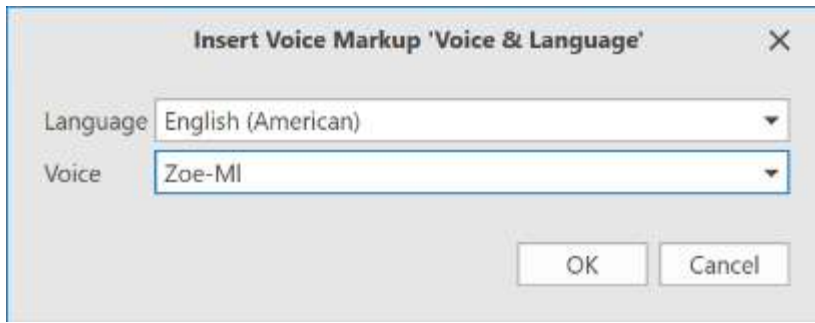
NOTE

Along with other characteristics, the output language can also be saved to a **Speaker profile** for quick and easy management.

2.7.1.3 Adjuste the voice characteristics

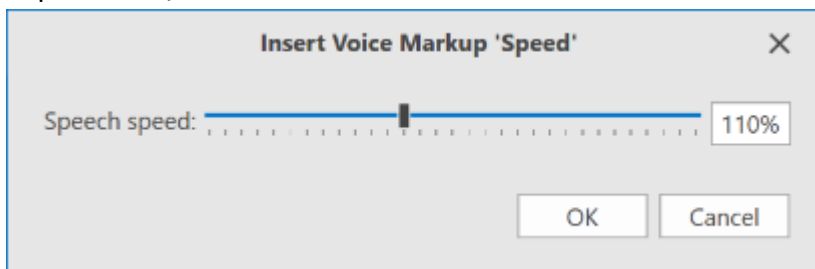
Voice & Language <Voice=XX/>

If the language you installed in Voice Reader Studio 22 includes several voices, you can use the **Voice Markup Voice & Language** to change the reader within that language. To do this, select one of the voices displayed in the drop-down menu of the line **Voice**.



Speed <Speed=XX/>

The command for **speech speed** is called Speed. The default value of speed is 100. Example: <Speed=110/>



Chooses a speech speed that is 10% over the default value (100)

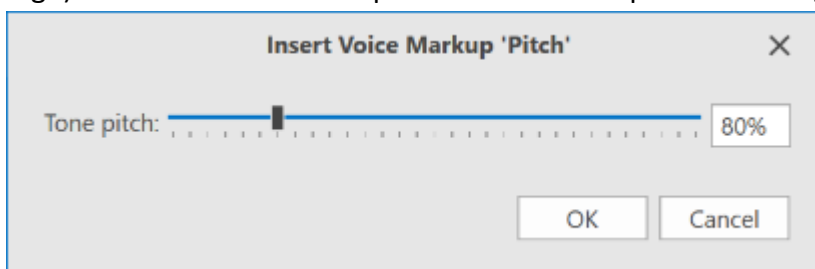
NOTE

Values exceeding 150 lead to unnatural sounding results.

You can adjust the speed using either the slide control or by entering a percentage value in the number field. Please confirm your entry by pressing the Enter or Tab Key.

Pitch <Pitch=XX/>

The command for **pitch** is called Pitch. Values can range from 50% (very deep) and 200% (very high). The default value for pitch is 100%. Example: <Pitch=80/>



Lowers the pitch to 80% of the default pitch level

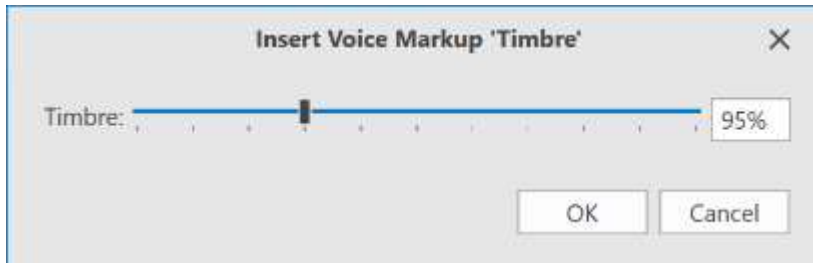
You can adjust the pitch using either the slide control or by entering a percentage value in the number field.

Timbre <Timbre=XX/>

The command for the **voice colour** is Timbre. The value can be between 80% (very dark) and 130% (very high). The default value for the timbre is 100%.

Example: <Timbre=95/>

darkens the timbre of the voice to 95% of the default value.

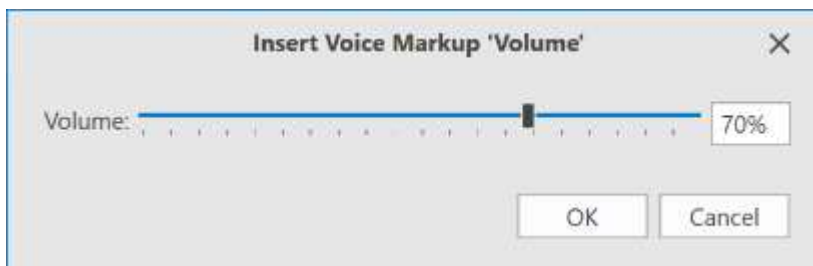


You can adjust the timbre either by dragging the slider or by entering a percentage value in the number field.

Volume <Volume=XX/>

The command for **volume** is called Volume. Values can range from 1% (almost mute) to 100% (maximum volume). Example: <Volume=70/>

You can adjust the volume using either the slide control or by entering a percentage value in the number field.



Adjusts volume to 70% of the maximum volume

2.7.2 Using Speaker Profiles

The tonal appearance of speech output is dependent upon six parameters that can be combined into a Speaker Profile:

- Language (e. g. German or English or...)
- Voice
- Speech speed
- Pitch
- Timbre
- Volume
- End of sentence pause

Each of these parameters can be individually adjusted. Speaker Profiles allow you to combine and save several or all of these parameters in a profile that you can then access at any time.

Speaker Profiles ensure that your texts will always be read by the same »speakers«, and also allow you to quickly and easily switch between different speakers, e.g. for dialogue scenes.

Creating and editing Speaker Profiles

To setup or change a Speaker Profile, do the following:

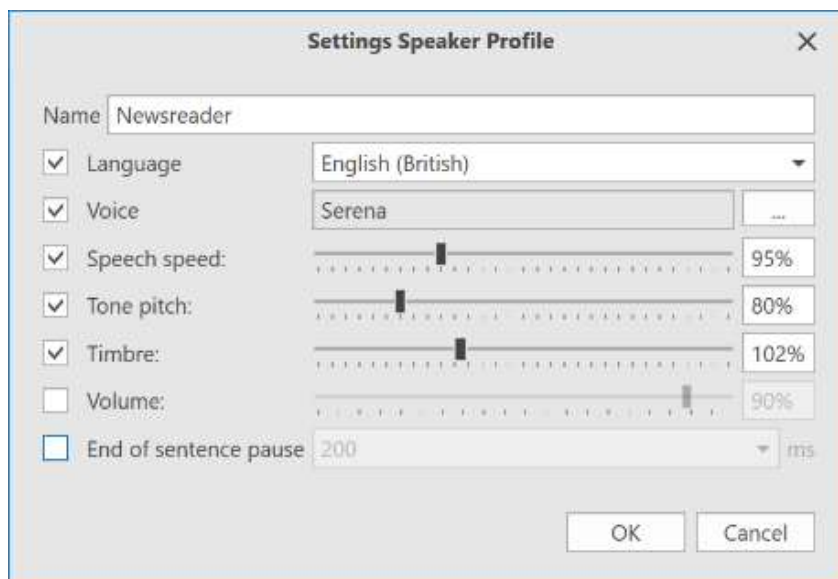
1. Click the **Speaker Profiles** button in the **Settings** group of the **Read Tab**.
2. In the **Speaker Profiles** dialogue, you can set up a new profile (**New** button) or change an existing one (select in the list, then click on **Edit**).
3. In the **Settings Speaker Profile** dialogue, you can assign a new name to the profile or change an existing name, and you can adjust all the parameters that are to be saved in the Speaker Profile.

Just check the box next to the desired parameter and adjust the value as needed.

Apply and save your entries by clicking **OK**.

NOTE:

When a parameter has not been defined in a Speaker Profile (checkbox not selected), its value does not change when the profile is assigned.



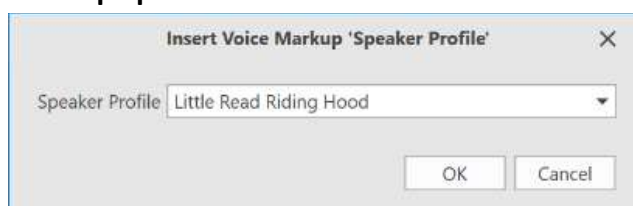
Settings Speaker Profile dialogue: Determine the parameters of your Speaker Profile here.

Deleting a Speaker Profile

Select the Speaker Profile to be deleted from the **Speaker Profile** list, then click on **Delete**.

Assigning a Speaker Profile <Profile=XX/>

In order to switch speech output to a certain Speaker Profile, insert it into the text using **Voice Markup Speaker Profile**.



You can choose to insert the **Voice Markup Speaker Profile** directly at the cursor position. In that case, it will be inserted into the text with the parameters selected for the Speaker Profile, and will remain in effect until you use a new **Voice Markup** in the following text section for another Speaker Profile.

```
<Profile=Little Red Riding Hood/>Grandma, why do you have such big ears?  
<Profile=Wolf/>All the better to hear you!  
<Profile=Little Red Riding Hood/>Grandma...
```

In this example, the Speaker Profiles “Little Red Riding Hood” and “Wolf” are being alternated.

However, you can also select a text section and assign a **Voice Markup** to it. This inserts a Begin and an End command for the **Voice Markup**.

```
<Profile=Little Red Riding Hood/>Grandma, why do you have such big ears?  
<Profile=END_Little Red Riding Hood/>  
<Profile=Wolf/>All the better to hear you! <Profile=END_Wolf/>  
<Profile=Little Red Riding Hood>Grandma...<Profile=END_Little Red Riding Hood/>
```

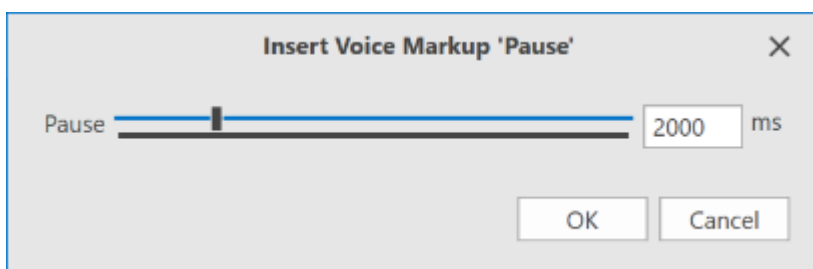
In this example, the Speaker Profiles “Little Red Riding Hood” and “Wolf” are also alternated, but the Voice Markup was inserted by selecting text.

2.7.3 Inserting Pause <Pause=XX/>

Speech pauses are an excellent method to structure audio output and enhance its intelligibility. Use the **Voice Markup Pause** and adjust the desired length of the pause using the slide control, or by entering a number directly.

The pause inserted by **Voice Markup** is added to the reading pause that Voice Reader Studio 22 inserts by default between individual words or at the end of a sentence.

Voice Markup Pause can be applied at a cursor position. If the option is selected when a text section is marked, it will be inserted directly before the marked text.



The duration of the pause is specified in milliseconds (ms).

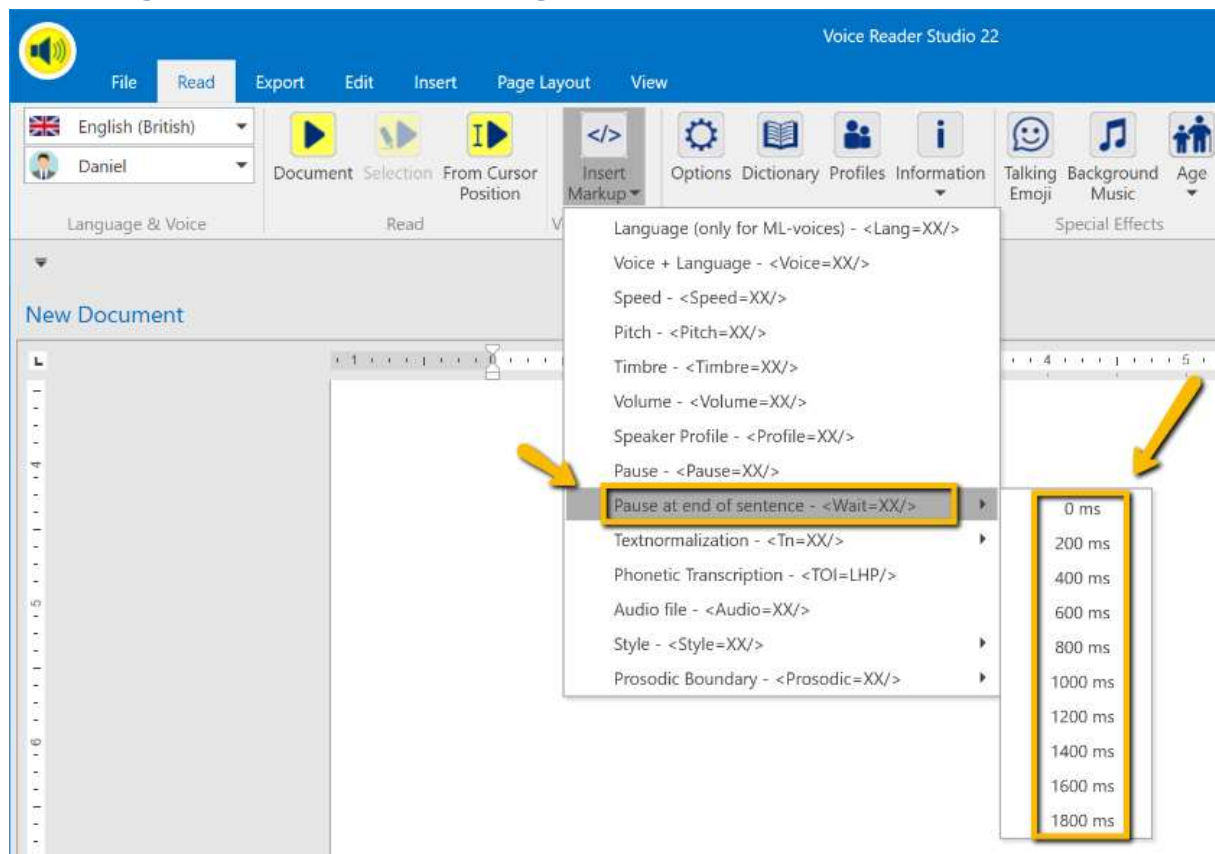
The minimum value is 100 ms (0.1 s), the maximum value is 10,000 ms (10 s).

And now our traffic report.

```
<Pause=2000/>M1, London to Watford <Pause=1000/> In between...
```

In this case, speech pauses of 2 and 1 seconds are used to separate the individual units from each other more distinctly.

2.7.4 Length of Pauses after a reading unit <Wait=XX/>



A speech pause after a reading unit helps to enhance the intelligibility of texts without disturbing the flow of the reading.

If **by sentence** has been chosen as the reading unit in the Voice Reader Studio 22 options, the pause will follow the end of the sentence. Accordingly, if **by paragraph** has been chosen, a pause will follow the end of the paragraph being read.

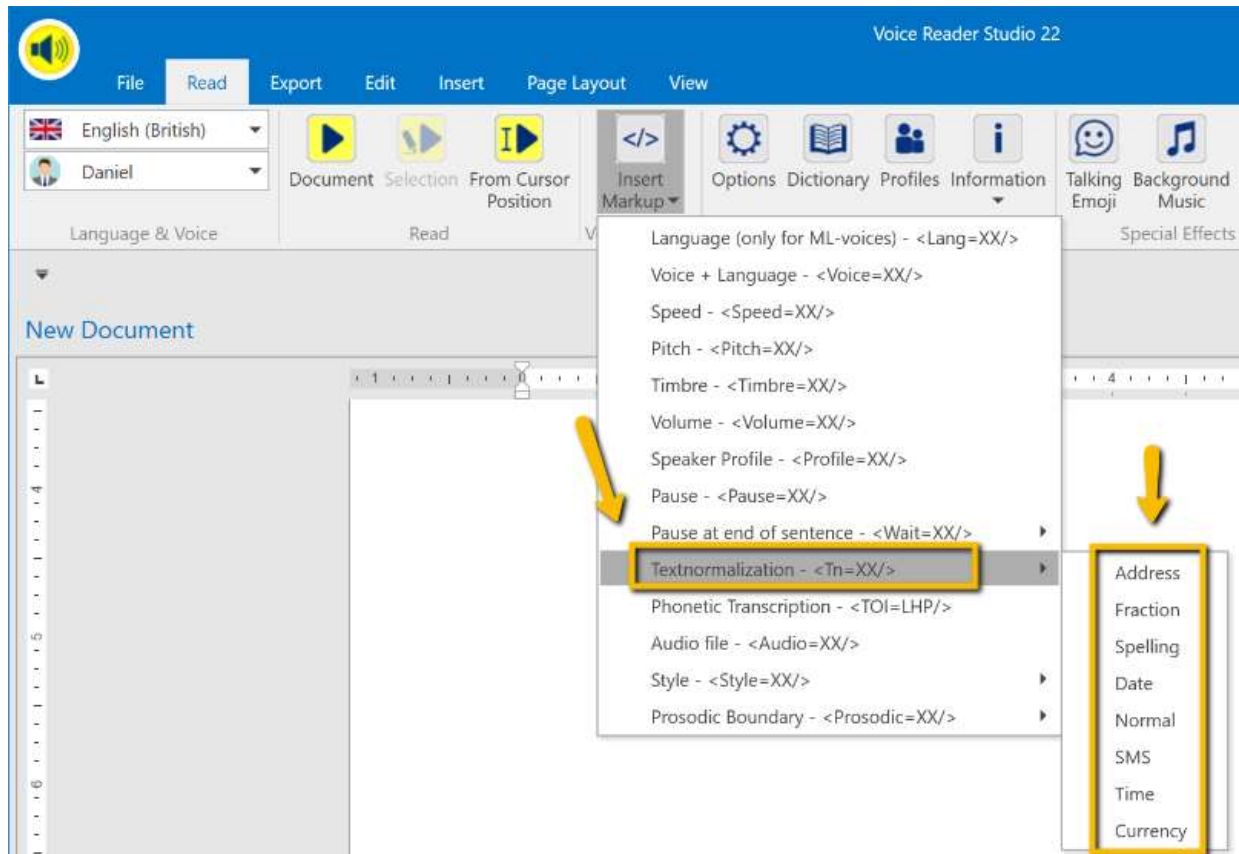
The length of the pause is specified in milliseconds (ms). The minimum value is 0 ms (no pause), and the maximum value is 1800 ms.

When a Voice Markup is inserted at a cursor position, it will remain in effect until it is replaced by a new Voice Markup for a different end of sentence pause. If you apply the Voice Markup to a text selection, it will affect only the selected area. The settings for the end of sentence pause that have been selected in the **Options** of the group **Settings** in the **Read** Tab will apply to the remainder of the text.

2.7.5 Text Normalization <Tn=XX/>

Using the **Voice Markup Text Normalization**, text styles can be defined for individual words or text areas. Either select the text to be defined and choose the desired style from the drop-down menu of the **Voice Markup** or insert the **Voice Markup** at the cursor position.

Available options are:



Text Normalization Address <Tn=address/>

This type of **Text Normalization** pays special attention to decimals, ordinal and cardinal numbers, telephone number formats, URLs and email addresses, banking IDs and especially postal code formats.

This means that the postal code is read integer by integer, and not as an entire number.

Text Normalization Fraction <Tn=fraction/>

The **Text Normalization Fraction** pays special attention to fractions.

Example: 1 1/16 is spoken as one and one sixteenth.

Text Normalization Spelling <Tn=spell/

The selected text is spelled out.

Text Normalization Date <Tn=date/>

Text Normalization Date pays attention to various date formats.

Text Normalization Normal <Tn=normal/>

If you have placed one of the text normalizations such as Spelling, SMS, Address, Fraction, Currency, Date or time at a cursor position, the **Voice Markup Text Normalization Normal** lets you revert to the previously set text style.

Among other things, the text style **Normal** considers decimal, ordinal and cardinal numbers, currencies, date, time and telephone formats, URLs and email addresses.

Text Normalization SMS <Tn=sms/>

The **Text Normalization SMS** is the only one that recognizes Smileys. Besides that, it considers decimal, ordinal and cardinal numbers, currencies, date, time and telephone formats, URLs and email addresses.

Text Normalization Time <Tn=time/>

Text Normalization Time is used when announcing the time.

Text Normalization Currency <Tn=currency/>

Text Normalization Currency considers the various styles of writing currencies.

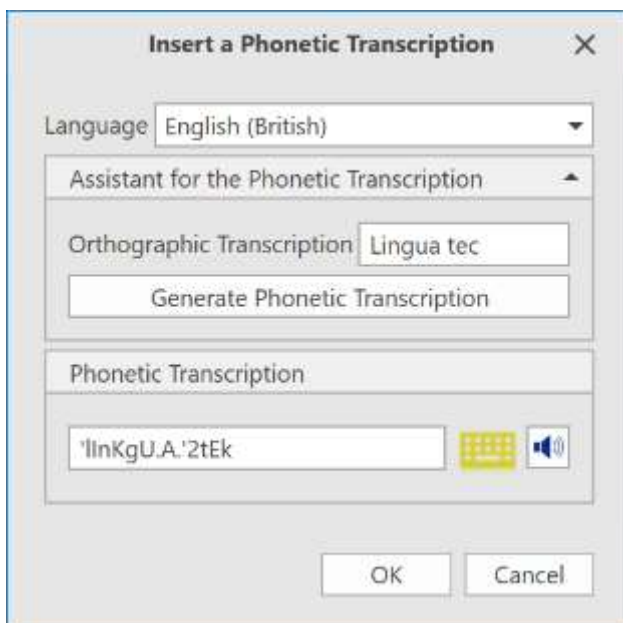
2.7.6 Inserting a Phonetic Transcription <TOI=LHP/>

It may be the case that the pronunciation of a term should be changed only at a particular point in the text, or in a specific document, not for the entire text. In this case, you can use Voice Markup to insert a phonetic transcription in the of Voice Reader Studio 22 editor.

Simply mark the term for which you want to insert a phonetic transcription, then open the **Phonetic Transcription** Voice Markup.

Enter the desired pronunciation, and when the selected term is read, it will be replaced by the phonetic transcription.

If you open the **Phonetic Transcription** Voice Markup without having first selected a word in the text, the phonetic transcription will be inserted at the point of the cursor, i. e. it will be read in addition to the existing text.



Note: For the term as well as for the transcription is existing a size limit of 100 characters each.

Instructions:


In the **Insert a phonetic transcription** dialogue, first choose the language (in case you have purchased and installed more than one language of Voice Reader Studio 22).

Afterwards, you can choose to either have the phonetic transcription generated

- a) automatically from the text (click on **Generate phonetic transcription** - this will automatically generate a phonetic transcription from the entry in the **Orthographic Transcription** field, which can then be manually adjusted.)
- b) or enter it using the phonetic keyboard assistant (click the Keyboard button and make then make the entry using the phonetic keyboard).

It works like this: By right-clicking a symbol on the keyboard, you can use the Listen button to hear an example containing the selected sound. If you want to transfer the phonetic transcription of the sound directly into the **Phonetic Transcription** field, left-click the keyboard symbol. A “mouse-over”, i.e. simply hovering over a keyboard symbol with the mouse cursor, will also display an associated example term and its phonetic sound transcription. The sound in the example will be emphasized by brackets.

- c) or just type it directly into the Phonetic Transcription field (suitable for experienced users).

Before confirming the entry of the phonetic transcription by clicking **OK**, you can listen to the new pronunciation using the loudspeaker icon. 

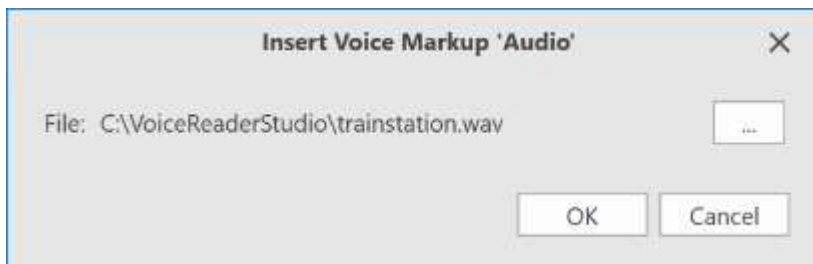
2.7.7 Inserting a WAV file <Audio="XX.wav"/>

You can integrate external audio files into the Voice Reader Studio 22 audio output, e.g. to playback a jingle or notification sound. Please note that audio files are only supported which are stored locally on your PC and which are in WAV file format with the following settings:

- Bit depth: 16 Bit
- Sample Rate: 22050 Hz
- Mono (1 channel)

You can insert a WAV file using the Voice Markup **Audio**.

It can be applied at the cursor position. If the option is selected when a text section is marked, it will be inserted directly before the marked text.



Click on **Browse**, choose the desired WAV file on your computer, and confirm by clicking **OK**.

<Audio="C:\sounds\signals\info-in.wav"/>For your own security, please keep your seat belt fastened for the duration of the ride. Thank you. **<Audio="C:\sounds\signals\info-out.wav"/>**

In this case, the announcement is framed by two notification sounds.

2.7.8 Changing Speaker Style <Style=XX/>

If your selected voice supports the speaking styles (see table in Appendix 7.2.), you can use the Voice Markup "Style" to switch between normal, forceful or apologetic in the speaking style of your voice.

Select the section of text to which the Voice Markup is to be applied and then select the desired setting.

```
<Style=forceful/>Caution! Hail may cause damage to your vehicle. <Style=END_forceful/>  
<Style=apologetic/>This is a great pity, but unfortunately it cannot be changed.  
<Style=END_apologetic/>
```

NOTE:

The speaking styles **forceful** and **apologetic** have their own reading settings in regard of speed, pitch and volume. When one of these speaking styles are selected, the settings for speed, pitch and volume cannot be adjusted manually.

2.7.9 Defining the Prosodic Binding to the following word <Prosodic=XX/>

With the Voice Markup **Prosodic Binding**, you can influence the sentence melody.

The Voice Markup can be inserted at the current cursor position and applies to the following word and its binding to the following word.

A weakening of the following word removes an accentuation and binds the two following words more strongly together (no silence),

an accentuation of the following word weakens the binding of the two following words and inserts a silence.

```
I will meet Hans tomorrow at the cinema.  
I will meet <Prosodic=Strong/> Hans tomorrow at the cinema.  
I will meet Hans <Prosodic=Strong/>tomorrow at the cinema.  
  
I didn't attack you.  
I <Prosodic=Strong/> didn't attack you.  
I <Prosodic=Weak/> didn't attack you.
```

2.8 Dictionary Management

The Voice Reader Studio language packs include an extensive vocabulary and can easily convert most text to speech. However, in certain cases it may be necessary to customize the pronunciation of a single word or a multi-word term (e.g. in the case of specific foreign words, technical terms or names); some types of text also require that certain terms in the text are not included in the reading (e.g. navigation elements in web documents). For tasks such as these, Voice Reader Studio 22 provides the possibility of entering terms into custom dictionaries, and to use this vocabulary as needed for speech output or conversion to an audio file. How to create, manage and activate dictionaries for the conversion of text into speech is explained in section **2.8.1 - Creating, editing and managing dictionaries**. How to create and edit dictionary entries is explained in section **2.8.2 - Creating and editing dictionary entries**.

2.8.1 Creating, editing and managing dictionaries

Creating new dictionaries

In order to make dictionary entries, a dictionary for the language currently in use must first be created. Switch to the **Settings** group in the **Read** Tab. Click on **Manage Dictionary** to open the **Dictionary List** window, in which you can create a new dictionary by clicking **New**. Select the desired language in the **Language selection** window. Confirm by clicking **OK**.

NOTE

A selection of different languages will be available only if you have purchased and installed several language versions of Voice Reader Studio 22.

Assign a name to the dictionary (**Create new dictionary** window, **Dictionary name** field). The field **Description** is optional. Click on **OK** to complete the creation of the new dictionary. It will now be shown in the dictionary list.

Editing dictionaries

To make a new dictionary entry, or if you subsequently want to change the description or the name of a dictionary, select the dictionary that is to be edited from the Dictionary list (**Read** Tab, **Settings** group, **Manage Dictionary** button), then click **Edit**. In the Edit dictionary window, you can change the dictionary name (**Dictionary Name** field), the description (**Description** field), or make a new entry (**New** button). Click on **OK** to apply your changes. Detailed information on creating a new dictionary entry can be found in section **2.8.2 - Creating and editing dictionary entries**.

Activating / deactivating a dictionary

Whether or not a specific dictionary is used for reading depends on whether it has been activated or deactivated in the dictionary list. Several dictionaries can be active at the same time.

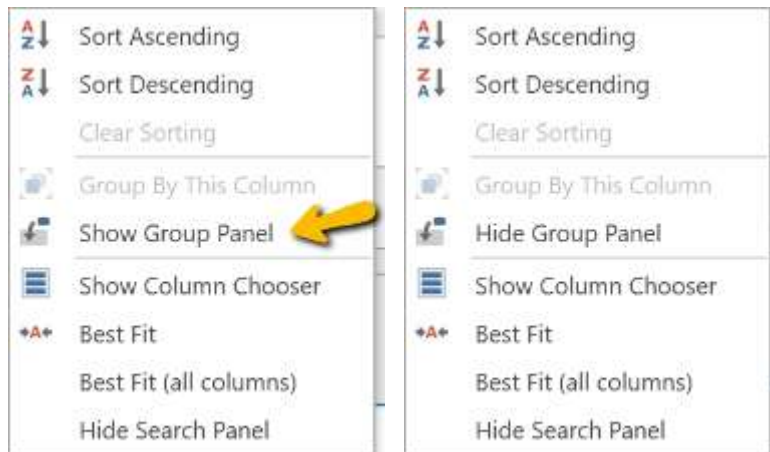
By default, a dictionary is activated following its creation. To deactivate a dictionary, please open **Manage Dictionary (Read Tab, Settings group)**, and in the **Is active** column, uncheck the box next to the dictionary you want to deactivate. To reactivate the dictionary, simply check the box again. This way you can use dictionaries for the reading of certain text, and otherwise deactivate them.

Deleting dictionaries

If you want to remove a dictionary from the **Dictionary list** entirely, select the dictionary in question and click on **Delete**. If you are sure that you want to irrevocably delete the dictionary file, confirm the security prompt.

You should not delete the dictionary file in question if you just want to temporarily deactivate the dictionary. Please note that a deleted dictionary cannot be recovered unless it was previously exported and backed up. More details on the import and export of dictionaries can be found in sections 2.7.3 and 2.7.4.

Managing the Dictionary List



The view and grouping of the dictionary list can be customized. To do this, right-click on the table header (Activate, Name, Language, Description).

Sort alphabetically

Individual columns can be sorted alphabetically. Either ascending (from A to Z), or descending (from Z to A) (**Sort ascending** and **Sort descending** in the context menu). With **Clear sorting**, the changes to the sorting can be undone.

Grouping

If you want to group the dictionary by columns to make the layout more clear, this can be achieved

- a) by using the Group editor from the context menu, or
- b) in the Group field directly.

Grouping is possible only by the columns **Is active** and **Language**.

Regarding a)

In the Dictionary List, right-click the header of either the **Is active** or the **Language** column, then select the option **Group By This Column**. This will group the dictionary list either by language, or by status (activated or deactivated dictionary).

To undo the grouping, select the option **Undo Grouping**. You'll also find this option by right-clicking the header of either the **Is active** or the **Language** column.

Regarding b)

In the Dictionary List, right-click the header of either the **Is active** or the **Language** column, then select the option **Show Group Panel**. This will display an additional area above the table in which the fields for the group can be arranged. To hide the group panel again, Choose **Hide Group Panel** from the context menu.

The grouping can be modified by shifting and dragging the table headers **Is active** and **Language** in the group panel. The button on the left side of the group panel displays the current grouping. A field can also be dragged out of the **Dictionary List** window frame; this corresponds to a deactivation of the column view in the dictionary table. This is additionally clarified by a Close icon.

To re-insert a column that has been removed from a table, right-click one of the table headers (Is active, Description, Name, Language) then choose **Show Column Chooser**. The deactivated column will be displayed in the column chooser window. It can now be re-inserted into the table header of the **Dictionary List** by dragging and dropping it from the **Column Chooser**.

Column Chooser

You can sort or hide columns entirely using the option **Show Column Chooser** in the context menu of the table header.

To remove a column from the Dictionary List view, drag and drop it from the table header into the column chooser window.

To move a column, with the column chooser open, drag and drop the column header to the desired location in the table overview.

To adjust the optimum width of one or all of the columns, choose

- a) **Best fit** from the context menu to adjust a single column
- b) **Best fit (all columns)** from the context menu to adjust all columns

To close the Column Chooser, select the option **Hide Column Chooser** from the context menu.

Searching the Dictionary List

You can search the dictionary list for dictionary names, dictionary language, or description. In the **Dictionary List** window, enter the search term into the **Search** panel.

If the Search panel is not visible, you can display it by right-clicking the table headers (Is active, Description, Name, Language) and selecting the option **Show Search Panel**. Once the search term has been entered, press the Enter key to start the search. Please observe the correct upper and lower case spelling.

2.8.2 Creating and editing dictionary entries

You can define your own dictionary entries to complement and customize pronunciation. The following options are available to do this:

- **Dictionary entry with orthographic pronunciation transcription**

This transcribes the pronunciation of the dictionary entry with regular text. No knowledge of special phonetic spelling is required.


- **Dictionary entry with phonetic pronunciation transcription**

The pronunciation of the dictionary entry is transcribed using a phonetic alphabet. A phonetic alphabet is a collection of symbols with which the sounds of the human voice can be precisely described and transcribed.

NOTE

- Voice Reader Studio 22 also supports the entry of **multi-word terms**, i.e. entries consisting of several words or units in the source text and/or the pronunciation. (Examples: »de Gaulle« or »etc. => et cetera«).
- The maximum length of a dictionary entry is **100 characters** (each for the term and the pronunciation).
- The dictionary entries are stored in separate dictionaries by **language**.
- If needed, you can also create, import and manage **multiple dictionaries per language**.
- Before a new dictionary entry can be done, the dictionary itself has to be created (Chapter 2.8.1).

2.8.2.1 Create a new dictionary entry using the ribbon

To create a new dictionary entry, switch to the **Read** Tab, into the **Settings** group and select **Manage Dictionary** . In the dictionary list, double-click the dictionary in which to create the entry (alternatively, select the dictionary in the list and then click **Edit**).

In the **Edit Dictionary** window, click the **New** button to create a new entry.

2.8.2.2 Create a new dictionary entry using the context menu

As an alternative to using the **Manage Dictionary** button, you can also open the **context menu** by right-clicking into the Voice Reader Studio 22 editor, and then creating a new dictionary entry by choosing **Add word to the dictionary** or **Insert selection into the dictionary**.

This provides the following possibilities:

- a) If no term has been selected in the text to be read, and you choose the option **Add word to the dictionary** from the context menu, then, following the confirmation of the language and the selection of the desired dictionary, a new blank dictionary entry will be opened. Fill this with the term for which you want to create a dictionary entry.
- b) If you have selected a term in the text to be read, and choose the option **Insert selection into the dictionary** from the context menu, then, following the confirmation of the language and the selection of the desired dictionary, a new dictionary entry containing the selected term will be opened. Although in this case the **Term** text field in the dictionary will already be filled, it can be manually adjusted at any time.

STEP BY STEP

Follow these instructions to create the dictionary entry:

1. Term:

If it has not already been filled, enter the term into the field of the same name. Make sure to observe the correct spelling.

2. Description (optional):

Optionally add a description. You can leave your own notes here. Otherwise, the field can also remain empty.

3. Pronunciation:

Voice Reader Studio 22 provides two possibilities to describe pronunciation:

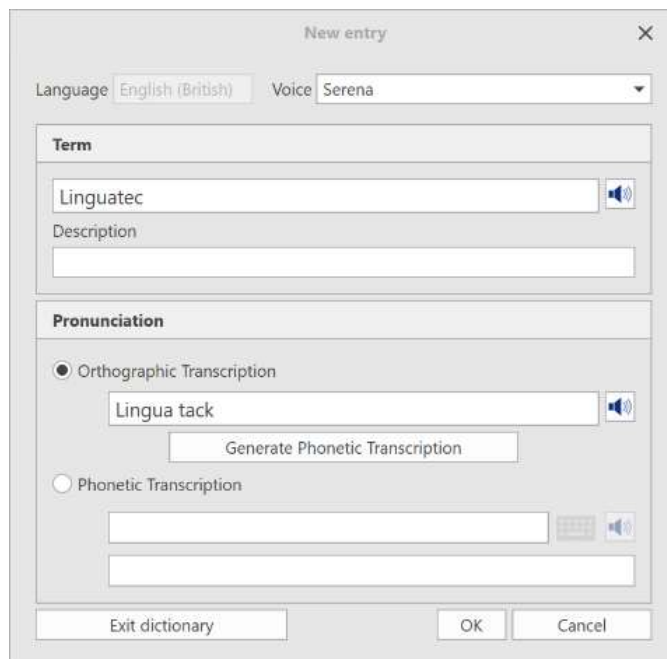
- using regular text (**Orthographic Transcription** field)
- using a phonetic alphabet (**Phonetic Transcription** field)

Transcription using regular text has the advantage that it does not require any special knowledge

and that it is not necessary to refer to the phonetic alphabet. However, phonetic subtleties cannot be described using orthographic transcription.

2.8.2.3 Customize the pronunciation using the Orthographic Transcription

Click into the **Orthographic Transcription** field to automatically copy the term from the **Term** field.



New entry dialogue using orthographic transcription

NOTE

Copying will occur only if the text field is blank. If the **Orthographic Transcription** field already contains an entry, this must first be manually removed.

Afterwards, you can manually adjust the **Orthographic Transcription** as needed.

To check the changes in pronunciation, you can have the orthographic transcription read out loud by clicking the loudspeaker icon next to the **Orthographic Transcription** field.

NOTE


For multi-word terms we recommend to use the Phonetic Transcription, see chapter 2.8.2.4

To save the dictionary entry, click **OK**.

2.8.2.4 Customize pronunciation using the Phonetic Transcription

You can enter the phonetic transcription directly into the **Phonetic Transcription** field. This procedure is best suited to experienced users.

Voice Reader Studio 22 offers the following input help for phonetic transcription



- a) an automatic generator (**Generate Phonetic Transcription** button)
- b) an on-screen keyboard for the phonetic alphabet (**Keyboard** button ).

Please make sure that a pronunciation definition for the dictionary term has been entered into the **Orthographic Transcription** field. By clicking into the blank field, the dictionary term will be automatically copied to this line.

Now click the **Generate Phonetic Transcription** button to receive an automatic suggestion in the **Phonetic Transcription** entry field. This can subsequently be adjusted to fit your pronunciation preference.

NOTE

The phonetic transcription suggestions provided by the Voice Reader Studio 22 generator are based on automatically generated approximation algorithms of the orthographic transcription, and may require post-editing.

The **Phonetic Keyboard** is an additional help that can be displayed by clicking the corresponding button . It will be opened in a new window. In case the keyboard button is greyed out, please make sure that the radio button in front of Phonetic Transcription  **Phonetic Transcription** has been checked.

To facilitate navigation, the **Phonetic Keyboard** has been divided into various areas. These are: **Vowels, Consonants, Diphthongs, Affricates, Intonation**, and the section **Others**.

Explanation

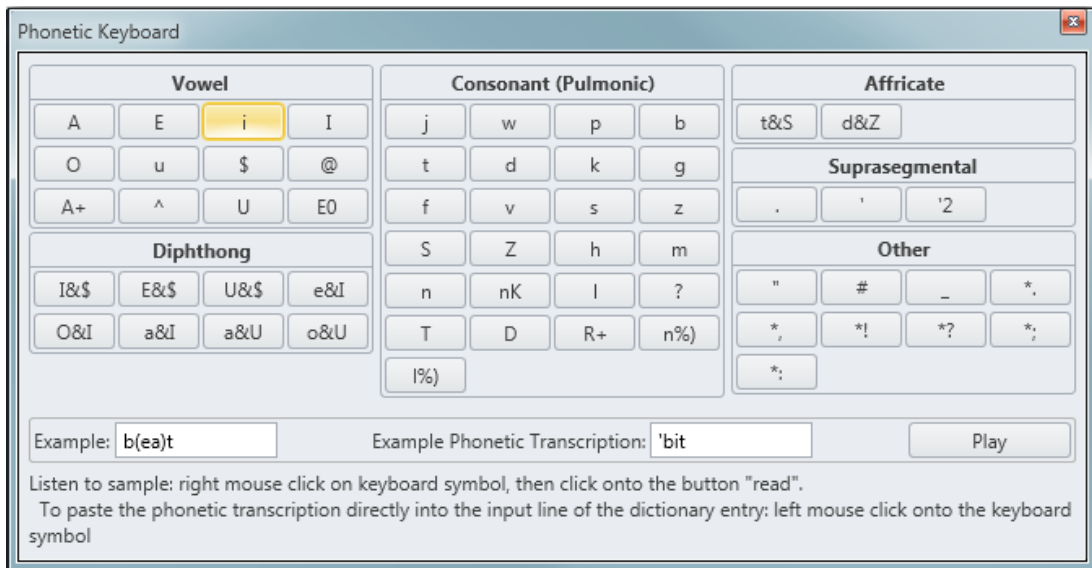
Vowel	
in English, for example:	A, E, EA, I, OUGH, OO, O, U, UR
Consonant	
in English, for example:	J, W, P, B, T, D, C, G, F, V, S, Z, SH, H, M, N, NG, L, TH, R, ON, LE
Diphthongs	
(= double sound consisting of 2 separate vowels) in English, for example:	OW, OU, ERE, OUR, OY, UY,
Affricates	
(= combination of a stop sound with a fricative, such that the stop sound transitions directly into the fricative) in English, for example:	[t&S] (church), [d&Z] (jungle)
Intonation	
	syllable division, primary emphasis, secondary emphasis
Others	
	sentence stress, pause, word boundary, period, comma, exclamation point, question mark, semicolon, colon

You can

- a) ... **Mouse Over** the keyboard symbols to display corresponding example terms and their phonetic transcription. The sound in the example is emphasized by brackets.



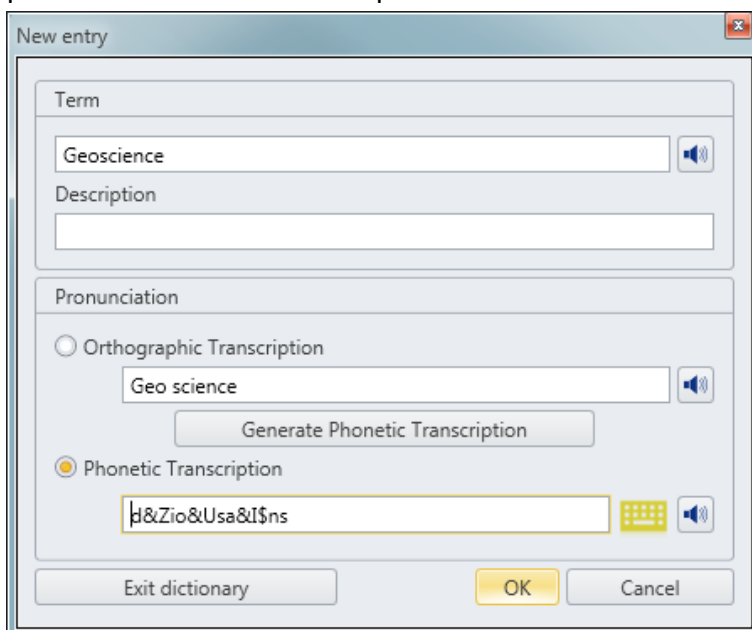
- b) ... listen to an example for every letter in the phonetic alphabet by right-clicking any keyboard button and selecting **Listen**. The example term will be displayed in the **Example** field, and the corresponding phonetic transcription will be displayed in the **Example Phonetic Transcription** field. In the Example field, the selected sound will be emphasized by brackets.



- c) ... directly transfer the phonetic transcription into Phonetic Transcription field of the open dictionary entry by left-clicking the corresponding sound key in the phonetic keyboard.

The phonetic keyboard window can be hidden by clicking the **Close** button.

Use the **Read** button (loudspeaker icon) next to the entry fields to compare the standard pronunciation with the new pronunciation definition.



*In the **New entry** dialogue, you can enter a pronunciation using phonetic transcription.*

You can switch between orthographic and phonetic transcription in the dictionary entry by clicking the corresponding radio button in the Pronunciation section. The change must be confirmed by clicking **OK**. Depending on the setting that has been saved, either the orthographic or the phonetic transcription will be chosen for reading.

Upper and lower case spelling must be observed for the dictionary term. If a pronunciation has been assigned to a upper case word, it will *not* be used if the same word occurs in the text with a small first letter.

The entry applies only to the form of the word as entered. For example, if you have created an entry for *Roosevelt* (Ruswelt), it would not be used for the possessive form («Roosevelt's birthday»), and may have to be separately defined.

Changing an existing dictionary entry

Open the **Dictionary List** from **Manage Dictionary** (on the **Read** Tab, in the **Settings** group), and select a dictionary. Then click the **Edit** button. Select or search for the desired term in the **Dictionary entries** list and click the **Edit** button to modify an existing entry. Confirm and save your changes by clicking **OK**.

Search for a dictionary entry

You can search an open dictionary (**Edit dictionary** window) for dictionary entries that you have created, pronunciation definitions, or descriptions of your dictionary entries. In the **Edit dictionary** window, enter the search term into the **Search** panel.



Once the search term has been entered, press the Enter key to start the search. Please observe the correct upper and lower case spelling.

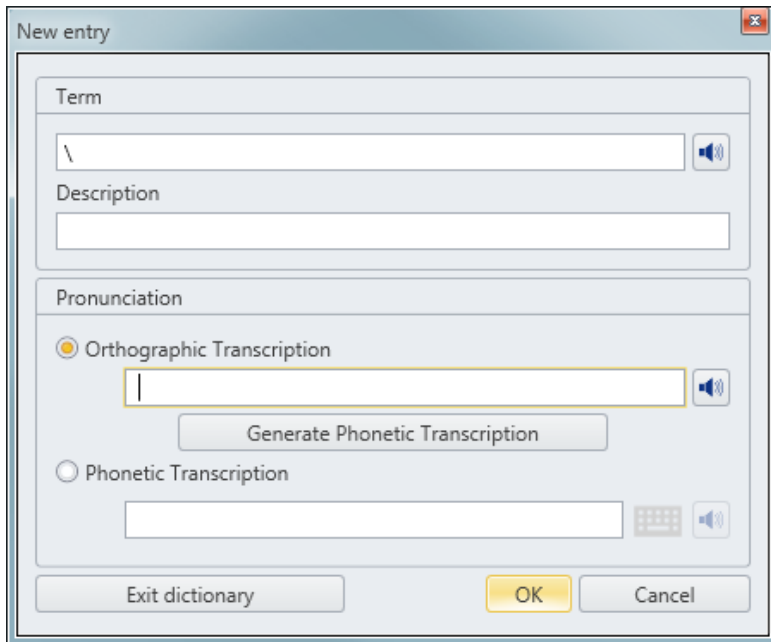
Deleting a dictionary entry

Open the **Dictionary List** from **Manage Dictionary** (on the **Read** Tab, in the **Settings** group), and select a dictionary. Then click the **Edit** button.

Select the desired term in the **Dictionary entries** list. Remove the selected dictionary entry by clicking the **Delete** button. Confirm the following security prompt to permanently remove the entry from the list.

Exceptions

Exceptions are characters or character strings that are to be ignored during speech output, i.e. they should not be read. Exceptions can be used to skip special characters during audio output. However, whole words, word sequences, or combinations of words and characters can also be defined as exceptions.

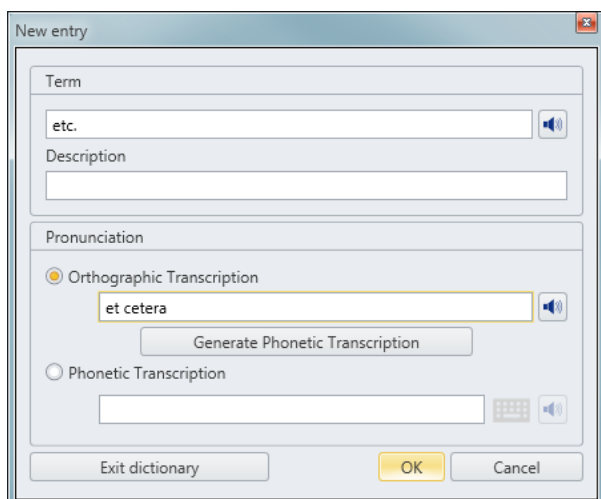
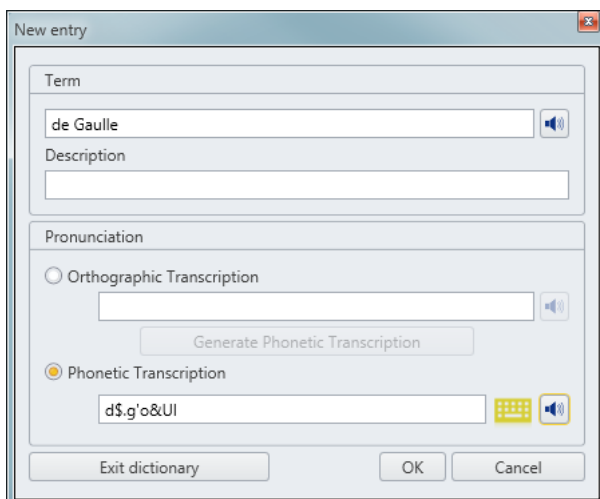


Example of a dictionary entry for an exception. This entry determines that the backslash character \ is not to be read.

To define an exception in the dictionary, create a new dictionary entry for it. Enter the exception into the **Term** field and insert a space into the **Orthographic Transcription** field. Save the new dictionary entry by clicking **OK**.


Multi-word terms

If the source text contains a term consisting of multiple words that should be pronounced as one word (e.g. »de Gaulle«), or when there is a single term that should be pronounced as multiple words (e.g. »etc. = et cetera«), you can also create corresponding dictionary entries for these.



2.8.3 Exporting dictionaries

You can export dictionaries in order to back them up externally or make them available to other users.


To export a dictionary, open **Manage Dictionary**  and in the **Dictionary List**, select the dictionary to be exported, marking it orange. Then click the **Export** button. This will open the **Save As** dialogue. Select the location where you wish to save and start the export by clicking the **Save** button.

The dictionary is exported as a **.lvr** file.

It is recommended to regularly export dictionary files to an external medium, also for backup purposes. For example, you can backup dictionaries to a USB stick, a CD, or an external hard drive, and if necessary, restore from there by importing the backed up dictionary files.

2.8.4 Importing dictionaries

You can import existing Voice Reader Studio 22 **.lvr** format dictionary files at any time.

Simply open **Manage Dictionary** , then click the **Import** button. Browse to the location of the existing or backed up Voice Reader Studio 22 dictionary file, select it, and start the import by clicking **Open**.

Import of Additional Voice Reader Studio 22 Dictionaries:

With the installation of Voice Reader Studio 22 an import folder is created in the programme directory: e.g.: C:\ProgramData\Linguatec\VoiceReaderStudio22\Data\Import.

It contains additional Voice Reader Studio 22 dictionaries for various languages, which you can import after installation (provided you have installed the corresponding language).

You will be informed when starting Voice Reader Studio 22.

Examples:

If you have installed Voice Reader Studio 22 **German**, you can import the dictionary `additional_dictionary_ged.lvr`.

If you have installed Voice Reader Studio 22 **British English**, you can import the dictionary `additional_dictionary_eng.lvr`.

If you have installed Voice Reader Studio 22 **American English**, you can import the dictionary `additional_dictionary_enu.lvr`.

If you have installed Voice Reader Studio 22 **French**, you can import the dictionary `additional_dictionary_frf.lvr`.


If you have installed Voice Reader Studio 22 **Italian**, you can import the dictionary `additional_dictionary_iti.lvr`.

If you have installed Voice Reader Studio 22 **Spanish**, you can import the dictionary `additional_dictionary_spe.lvr`.

2.9 Retrieving information

Retrieving information: the Information Button

When you want to find out the audio length of a selection or of the entire text with a quick click of the mouse, you can retrieve the information from the **Read** Tab, using the **Information** button in the **Settings** group and selecting the option **Show audio duration for the selection** or **Show audio duration for the whole document**.

To see the pronunciation settings that are in effect at the current cursor position, switch to the **Read** tab, and using the **Information**  button in the **Settings** group, select **Show reading options**.

NOTE


The pronunciation settings cannot be changed from here! Changing the settings would require switching to the **Options** dialogue (Tab: **Read** / Group: **Settings** /Button: **Options**).

3. Voice Reader Studio 22 Direct

Voice Reader Studio 22 Direct allows you to quickly have any text read from any application. Voice Reader Studio 22 Direct is a tool that remains inconspicuously hidden in the information area of the Windows taskbar when it is not needed, but is instantly available when you want to have a document section read, or saved to an audio file.

3.1 Starting Voice Reader Studio 22 Direct

Start Voice Reader Studio 22 Direct by selecting the entry of the same name from the **Linguattec – Voice Reader Studio 22** program group in the Windows Start menu, or by clicking the **Voice Reader Studio 22 Direct** desktop icon.

After Voice Reader Studio 22 Direct has been started, you will see an additional icon  in the taskbar notification area.









If the Voice Reader Studio 22 Direct application window is minimized, you can maximize it by double-clicking the application icon in the taskbar notification area.





The taskbar notification area is on the bottom right. After Voice Reader Studio 22 Direct has been started, you will find an additional icon here. By double-clicking the icon, you can maximize the minimized window.

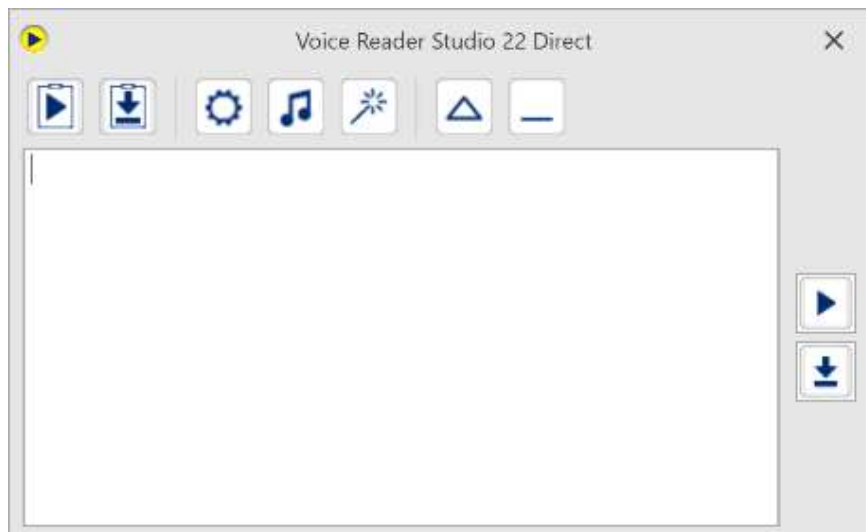
3.2 Buttons of Voice Reader Studio 22 Direct

Voice Reader Studio 22 Direct provides a toolbar containing buttons with which the most important commands can be directly started:

-  Read text from the clipboard
-  Export text from the clipboard
-  Options
-  Background Music
-  Clipboard Settings
-  Hide Editor
-  Show Editor
-  Minimize

To the right of the text field:

-  Read (entire text in the text field)
-  Export (entire text in the text field)



The Voice Reader Studio 22 Direct toolbar with the text field in view




The Voice Reader Studio 22 Direct toolbar with hidden text field

In Voice Reader Studio 22 Direct, the text field can be shown or hidden.


In the text field you can enter text yourself or paste it from the clipboard, which can be either read out or be exported into an audio file.


Show and hide the Voice Reader Studio 22 Direct Text Window

To hide the editor, click the Hide button  in the

Voice Reader Studio 22 Direct Toolbar. Click the Show button  to show it again.


Show and hide the Voice Reader Studio 22 Direct application window

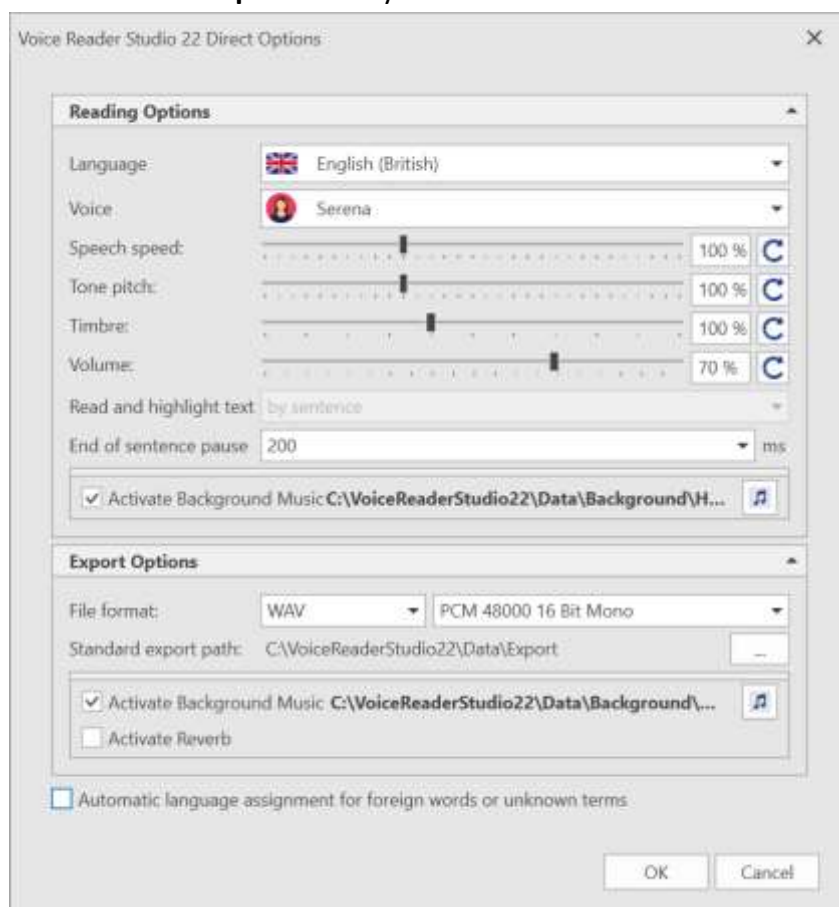
- To hide the entire Voice Reader Studio 22 Direct application window, select the Minimize icon  in the toolbar.

Do **not** click on the Close icon  in the title bar to minimize. This would terminate Voice Reader Studio 22 Direct.

- To restore the hidden Voice Reader Studio 22 Direct application window, double-click the Voice Reader Studio 22 Direct icon in the taskbar notification area.

3.3 Reading and Export Options of Voice Reader Studio 22 Direct

Via the button: **Options**  you can customize all available reading and export options.



The reading and export options of Voice Reader Studio 22 Direct

The Reading options

In the Voice Reader Studio 22 Direct reading options, you can configure the available parameters for speech output. Besides **language** and **voice**, **speed**, **pitch**, **timbre**, **volume** and **end of sentence pause** can be customized.

In addition, the option of **background music** can be activated. (Please see description for setting and testing background music in chapter 2.1.2.)

The **text segmentation** in the mini editor of Voice Reader Studio 22 Direct is always **by sentence**. Therefore, the option for different segmentation and marking options is deactivated. This function is available in the editor of the main application (See chapter 4).

Export options

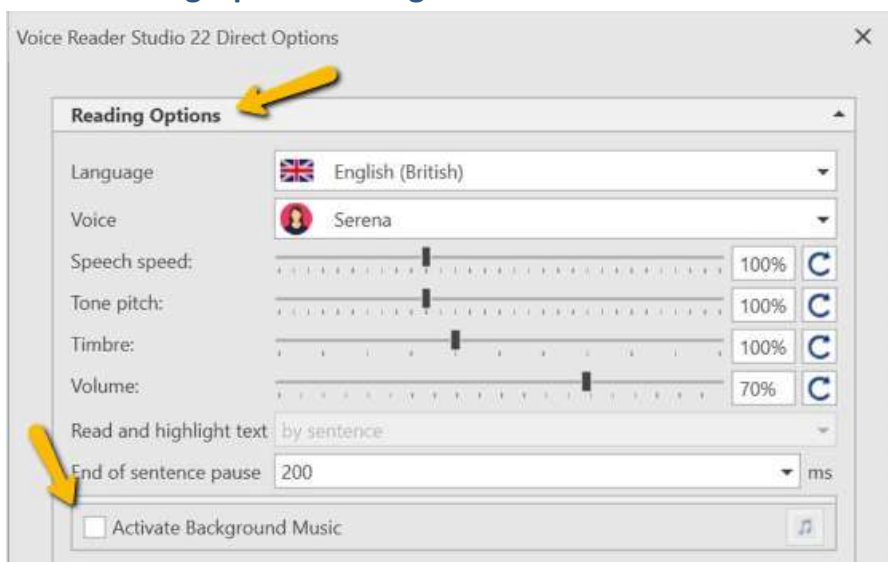
You can configure the settings for the audio **file format** (MP3 or WAV, and their respective bitrate) in the Voice Reader Studio 22 Direct export options, as well as the export location (**Standard export path**).


In addition, the option of **background music** and **reverb** can be activated. (Please see description for setting and testing background music and reverb in chapter 2.1.3.)

Confirm changes to the settings by clicking **OK**. To disregard any changes entered, simply click **Cancel**.

3.4 Background Music and Reverb in Voice Reader Studio 22 Direct

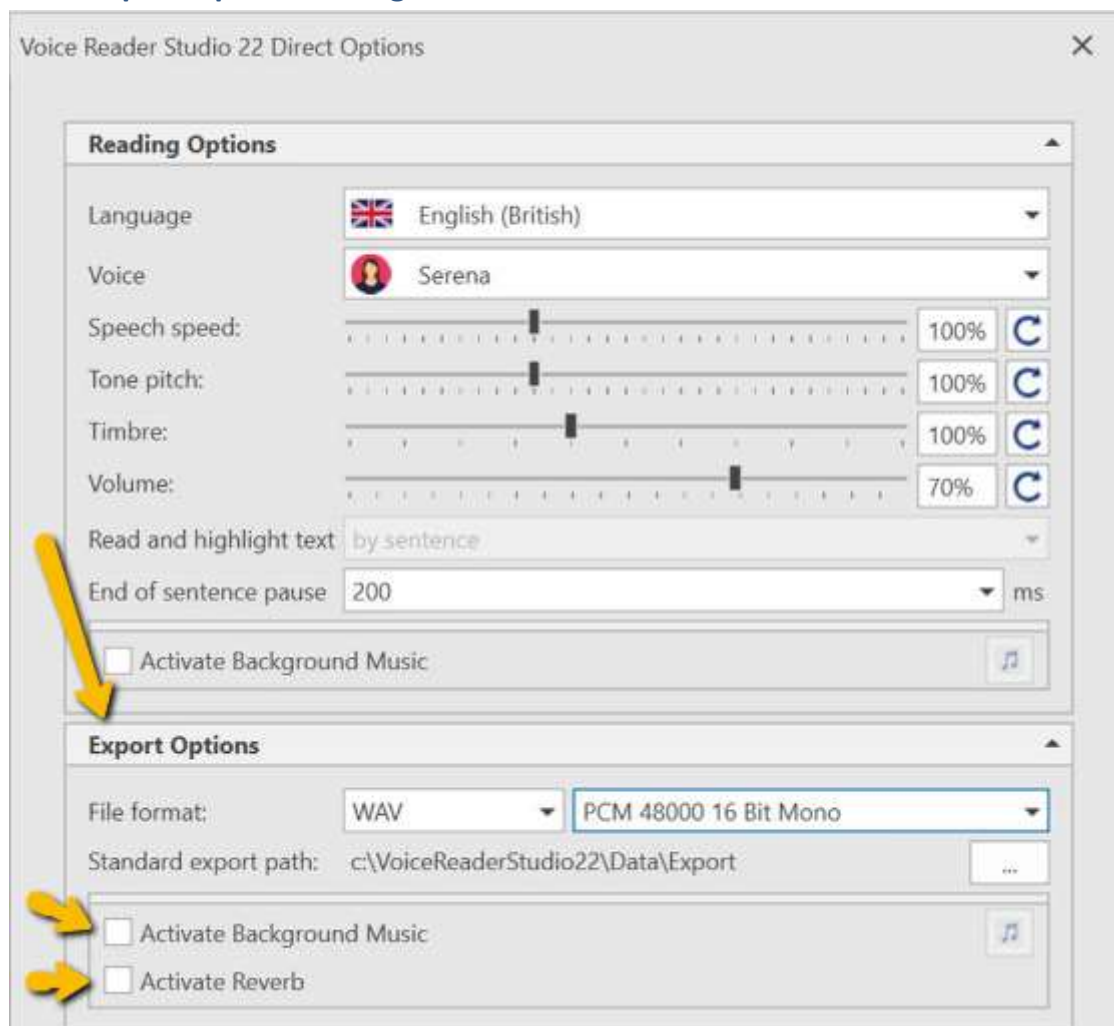
3.4.1 Reading Options: Background Music





Via the checkbox **Activate Background Music**  in the **Reading Options** area of the **Voice Reader Studio 22 Direct Options** you can deactivate or activate the function.

Proceed in the same way as described in chapter 2.1.2. (section: Special Effects Group) for setting and testing Background Music.

3.4.2 Export Options: Background Music and Reverb




Via the checkbox **Activate Background Music**  and / or **Activate Reverb**  in the **Export Options** area of the **Voice Reader Studio 22 Direct Options** you can deactivate or activate the functions.

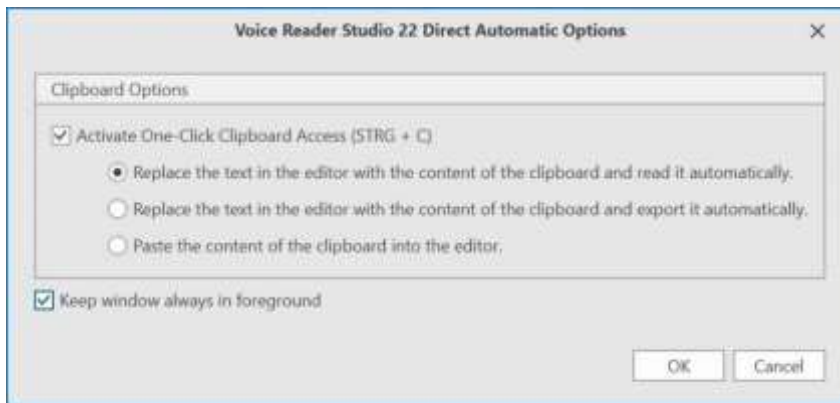
The **Background Music** and **Reverb** function works in the same way as in the Voice Reader Studio editor.

Proceed in the same way as described in chapter 2.1.3. (section: Special Effects Group) for setting and testing Background Music and Reverb.

3.5 Automatic Settings (One-Click Clipboard Access)

The built-in **One-Click technology** is the easiest way to use Voice Reader Studio 22 Direct. It allows you to select the text to be read and simply press the key combination CTRL+C. Click the **Automatic settings** button  (in the Voice Reader Studio Direct toolbar) to open the

options dialogue, where you can determine precisely whether and how Voice Reader Studio 22 Direct will use the contents of the clipboard.



Activate One-Click Clipboard Access

If you want to easily control the reading, export or pasting functions of Voice Reader Studio 22 Direct by using One-Click (CTRL+C), you must first allow access to the clipboard. You can do this by checking the box next the line **Activate One-Click Clipboard Access (CTRL+C)**

Copy text to clipboard

To copy text to the clipboard, select the desired text with the mouse in any application, then press **CTRL+C**.

Available clipboard settings

Depending on how the One-Click function has been assigned, the following actions can be initiated by marking text and pressing **CTRL+C**:

1. Automatic reading: Replace the text in the editor with the contents of the clipboard and read it automatically.

This command will automatically read the contents of the clipboard.

Also, the text being read will be inserted into the Voice Reader Studio 22 Direct editor. With this option, any existing text in the editor will be overwritten.

2. Automatic export: Replace the text in the editor with the contents of the clipboard and export it automatically.

This command will automatically export the contents of the clipboard. You will be prompted to confirm the name for the audio file and determine the export location. Also, the text in the clipboard will be inserted into the Voice Reader Studio 22 Direct editor. With this option, any existing text in the editor will be overwritten.

3. Automatic paste: Paste the contents of the clipboard into the editor.

This command will automatically paste the contents of the clipboard into the Voice Reader Studio 22 Direct editor. With this option, any existing text in the editor will not be overwritten. The new text will be added. This option is useful if you wish to combine text from various applications before having it read or exported to an audio file.



Keep window always in foreground

If you do not want Voice Reader Studio 22 Direct to be covered by any other window on your screen, this command lets you determine to always keep the Voice Reader Studio 22 Direct window in the foreground.

NOTE

If possible, copy entire sentences and make sure that the closing punctuation character (e.g. period or question mark) is also included. This will ensure that Voice Reader Studio 22 Direct will intonate the individual words correctly in the sentence context.

3.6 Manually reading and exporting text directly from the clipboard



If text that is in the clipboard should be read only as needed, not automatically, this can be done using the **Read text from clipboard**  command in the Voice Reader Studio 22 Direct toolbar. Accordingly, the command for exporting to an audio file is: **Export text from clipboard** .

Instructions

1. Select the desired section of text in any text-based document, e.g. on a website in the browser, in a Word document or in an email, and copy it to the clipboard (**Edit - Copy** or CTRL +C).

NOTE :

If possible, copy entire sentences and make sure that the closing punctuation character (e.g. period or question mark) is also included. This will ensure that Voice Reader Studio 22 Direct will intonate the individual words correctly in the sentence context.

2. Select the desired command to have the text in the clipboard read or exported into an audio file. Do this by clicking either the **Read text from clipboard**  or the **Export text from clipboard**  icon in the Voice Reader Studio 22 Direct toolbar.

Reading:

While reading with Voice Reader Studio Direct, a progress bar will be shown. To stop the playback prematurely, click on the Stop button.

Export:

When exporting, a dialogue window will open, in which you can specify the name for the new audio file

The setting of the audio file format (MP3 or WAV) and the location where the file will be stored depends on the corresponding settings you have specified in the Export Options section in the **Options** dialogue.

3.7 Manually entering text into the Direct Editor

Voice Reader Studio 22 Direct has a small text field in which you can enter the text for read or exporting into an audio file by hand. Please ensure that the text field is shown (and has not been turned off)



Entering text via keyboard:

You can either enter the text by using the keyboard.

Entering text manually via CTRL+V:

Or you can also paste text from the clipboard that you have previously copied from another application (or you use the one-click function like described in chapter 3.5). To copy the selected text, use the CTRL+C shortcut; use CTRL+V to paste into the Voice Reader Studio 22 Direct editor.

Reading / Export of the whole text in the editor:

To read or export the text in the editor, click on the  (**Read**) or  (**Export**) icon to the right of the editor.

In the course of reading, a progress bar will appear in Voice Reader Studio Direct.

You can end playback prematurely by clicking on **Stop reading**.

During export, however, you will receive a prompt to name the new audio file. The format (MP3 or WAV) to be used, and the location for the export are controlled by the settings you have configured under **Export options** in the **Options** dialogue.

NOTE

Unlike the extended editor of Voice Reader Studio 22, the minimal Voice Reader Studio 22 Direct editor does not include a generator for the creation of Voice Markups.


However, the Voice Reader Studio 22 Direct editor is also able to recognize **Voice Markups** that have been created for the modification of speech output. If the text section selected (or in the clipboard) for reading or export contains any Voice Reader Studio Voice Markups, these will be executed just as they would be in the Voice Reader Studio 22 editor.

Chapter 2.7 of this manual describes the use and customization of Voice Markups in more detail.

4. Integration Manager

Plugins that allow Voice Reader Studio 22 to be executed directly from a given application are available for the Microsoft Office applications **Word**, **Outlook** (not Outlook Express) and **PowerPoint**.

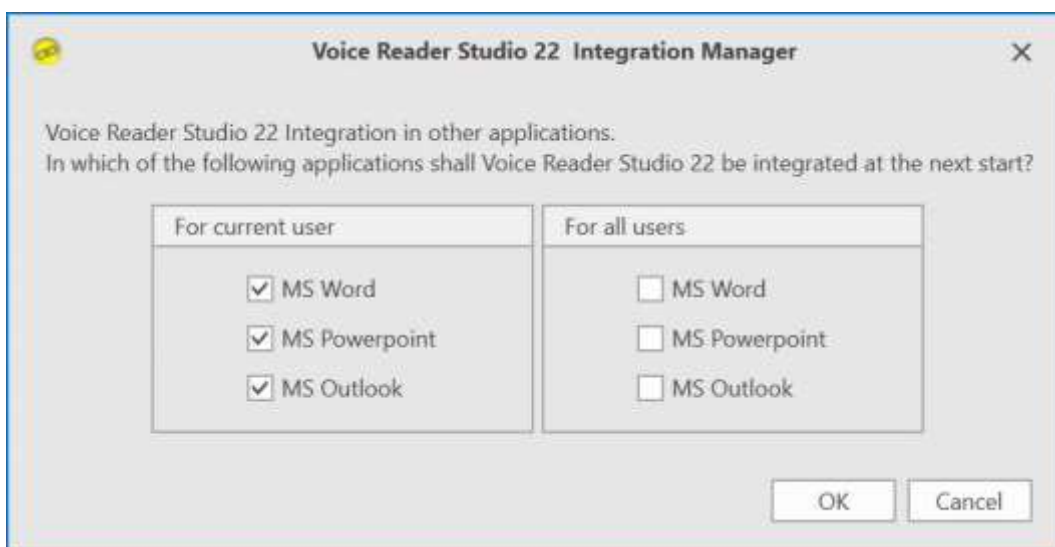
Using the **Integration Manager**, the individual plugins can be activated or deactivated again at any time. To do this, follow these steps:

1. Start the Integration Manager from the **Linguetec – Voice Reader Studio 22** program group in the Start menu, or by clicking the **Voice Reader Studio 22 Integration Manager**  desktop shortcut.
2. In the **Voice Reader Studio 22 Integration Manager** dialogue, select all applications in which the plugin is to be activated.
3. Determine whether the application selection applies for the current user only (option: **For current user**) or for all users that have access to this PC (option: **For all users**).
4. Confirm by clicking **OK**.
5. Start the respective Office application.

In the selected application, the **Read** and **Export** functions, and access to the dictionaries of Voice Reader Studio 22 will now be available. In Word und PowerPoint, **Voice Markups** can also be used.

The selections made in the Integration Manager remain in effect (also following a restart), until they are changed again.

If you no longer require the plugin for an application, run the Integration Manager again and uncheck the box next to the respective application. Confirm the change by clicking **OK**. The next time that the respective Office application is launched, it will run without the Voice Reader Studio 22 plugin.



You can activate and deactivate plugins in the Integration Manager. The selected settings will be in effect as of the next launch of the respective application, and will remain in effect until they are changed again.

4.1 Microsoft Word Plugin

Once the Word Plugin has been activated using the **Integration Manager** you will find an additional tab for **Voice Reader Studio 22** in Word's multi-function ribbon.

Before starting the plugin for the first time, resources (voice data, dictionaries) have to be loaded. To do this, click on the **Load plugin** button in the **Voice Reader Studio 22** Tab. You can determine start options in the plugin, such as whether to automatically load resources each time Word is started, or whether to use the **Load plugin** button and load the plugin manually each time.

When the loading procedure has completed, you will have access to all available Voice Reader Studio 22 commands.



*In Word, all available Voice Reader Studio 22 commands are grouped under the **Voice Reader Studio 22** Tab.*

The Voice Reader Studio 22 reading and export functions can be used in Word for the following:

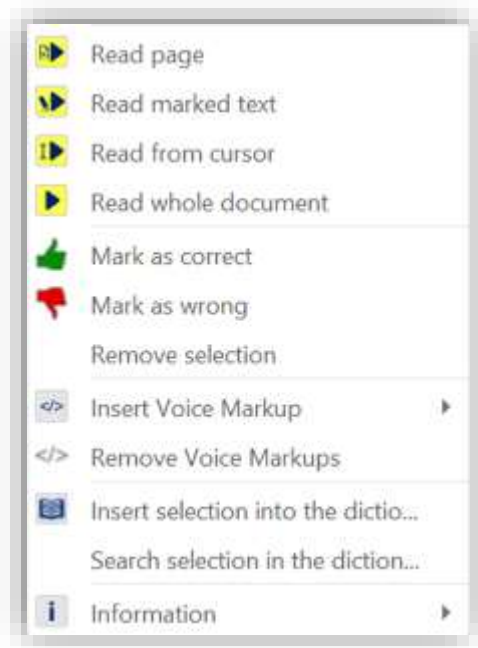
- the current page (**Read** or **Export** group: **Page** button),
- a text selection (**Read** or **Export** group: Selection button),
- from the cursor position (**Read** or **Export** group: **From Cursor Position** button) oder
- the entire document (**Read** or **Export** group: **Document** button).

The following Voice Reader Studio 22 commands are available in Microsoft Word:

1. Possibility to insert Voice Markups directly into the document: To do this, click on the **Insert Voice Markup** button in the **Voice Markup** group. Alternatively, choose the same command from the context menu. (See Chapter 2.7.1)
If you want to automatically remove Voice Markups from the text later, select the desired text area, right-click to open the context menu, and choose the option **Remove Voice Markups**.
2. To customize speech output settings (language, voice, pitch, speed, volume, end of sentence pause, audio format,...), click the **Options** button in the **Settings** group. (See Chapter 5)
3. Using **Speaker Profiles** (**Speaker Profiles** button in the **Settings** group), you can save pronunciation parameters as a profile, thus creating individualized speakers. (See Chapter 2.7.2)
4. By clicking the **Information** button in the **Settings** group (or the command of the same name in the context menu), you can display the audio length of the selected text

section or entire document. You can also display the pronunciation settings at the current positions. (See Chapter 2.9)

5. Using **Dictionary Management** (**Settings** group, **Manage Dictionary** button, or the command of the same name in the context menu), you can create and manage dictionaries directly from Word, and also make and adjust dictionary entries. (See Chapter 2.8)



The Word plugin expands the context menu of MS Word with the functions of Voice Reader Studio 22.

Notes on exporting

The format (MP3 or WAV) to be used, the bitrate to be used for the export, and the location for the export are controlled by the corresponding settings as configured by you in the Settings group of the **Options** dialogue. When you export the entire document, the name of the Word document will be used for the file name; e.g. the Word document **name.docx** would be converted into an audio file called **name.mp3**, or **name.wav**. However, if your settings determine that each page is to be exported into a separate file, the page number will also be appended to the name, e.g. **name_page_01.mp3**, **name_page_02.mp3**, etc.

To deactivate the integration of Voice Reader Studio 22 with Word, make the appropriate changes to the program selection in the Integration Manager, and confirm by clicking **OK**.

4.2 Microsoft Outlook Plugin

Once the Outlook Plugin has been activated using the **Integration Manager** you will find an additional tab for **Voice Reader Studio 22** in Outlook's multi-function ribbon.

Before starting the plugin for the first time, resources (voice data, dictionaries) have to be loaded. To do this, click on the **Load plugin** button in the **Voice Reader Studio 22** Tab. You can determine start options in the plugin, such as whether to automatically load resources each time Outlook is started, or whether to use the **Load plugin** button and load the plugin manually each time. When the loading procedure has completed, you will have access to all available Voice Reader Studio 22 commands.



*In Outlook, all available Voice Reader Studio 22 commands are grouped under the **Voice Reader Studio 22** Tab.*

With the Voice Reader Studio 22 Outlook Plugin received and sent emails can be read and exported into audio files.

The other Outlook components, such as tasks, contacts or notes, are not supported.

NOTE

For example, if you want to have the contents of a task form read to you, select the text and then process it in **Voice Reader Studio 22 Direct**.

Please note: Depending on the version of Outlook used and the security level that has been set, a security prompt with the message that a program is attempting to access Outlook may appear when reading or export are launched.

In this case, choose the **Allow access** option to enable Voice Reader Studio 22 for reading or export.

The reading and export function of Voice Reader Studio 22 always applies to complete emails. In an email folder (e.g. Inbox) you can either have the current email read or exported, or you can select several emails in the list (click with the mouse while holding down the CTRL key), and then apply the command to the entire selection. In an open email form, it is only possible to read or export the entire current email; the reading or export of selected sections of text within an email is not possible. (To do this, use Voice Reader Studio 22 Direct See Chapter 3) To run the desired command in Outlook, click the corresponding button on the Voice Reader Studio 22 Tab.

To customize settings, open the **Options** dialogue in the **Settings** group. In order to help your orientation while listening to an email, apart from the text Voice Reader Studio 22 will also include the sender, date received and subject line of the email.

The following Voice Reader Studio 22 commands are available to you in Outlook:

1. To customize speech output settings (language, voice, pitch, speed, volume, end of sentence pause, audio format,...), click the **Options** button in the **Settings** group. (See Chapter 5)
2. By clicking the **Show audio duration** button in the **Settings** group, you can display the audio length of the selected or opened email.
3. Using **Dictionary Management (Settings group, Manage Dictionary button)**, you can create and manage dictionaries directly from Outlook, and also make and adjust dictionary entries. (See Chapter 2.8)

Notes on exporting

Which format (MP3 or WAV) is used and where the file is saved depends on the corresponding options selected in the Settings group of the **Read** Tab. If the settings determine that each email is to be exported into a separate file (Option: **Export each email to separate file**), a file name including the sender, the date and the subject will be generated for each email. Otherwise, all selected emails will be saved into an audio file named **Selected Emails.mp3** or **Selected Emails.wav**.

NOTE

If you have selected the option to not export selected emails into separate files, you should not activate the option to **Overwrite files with the same name without confirmation**, if you want to keep the audio file **Selected Emails.*** with your previously exported emails. To deactivate the integration of Voice Reader Studio 22 with Outlook, make the appropriate changes to the program selection in the Integration Manager, and confirm by clicking **OK**.

4.3 Microsoft PowerPoint Plugin

If the PowerPoint plugin was activated from the **Integration Manager**, you will see an additional tab for **Voice Reader Studio 22** in the PowerPoint ribbon.

Before starting the plugin for the first time, resources (voice data, dictionaries) have to be loaded. To do this, click on the **Load plugin** button in the **Voice Reader Studio 22** Tab. You can determine start options in the plugin, such as whether to automatically load resources each time PowerPoint is started, or whether to use the **Load plugin** button and load the plugin manually each time.

When the loading procedure has completed, you will have access to the Voice Reader Studio 22 commands.



All available Voice Reader Studio 22 commands are grouped under the **Voice Reader Studio 22** Tab in PowerPoint.

The reading and export function of Voice Reader Studio 22 can be used

- for the current slide (**Read** group or **Export: Slide** button),
- for a selected text section (**Read** group or **Export: Selection** button), or
- for the entire presentation (**Read** group or **Export: Presentation** button).

To customize settings, open the **Options** dialogue in the **Settings** group.

The following Voice Reader Studio 22 commands are available to you in PowerPoint:

1. The possibility of inserting Voice Markups directly into the PowerPoint document: To do this, click on the **Insert Voice Markup** button in the **Voice Markup** group. Alternatively, choose the same command from the context menu. (See Chapter 2.6.1)
Note: The context menu of Voice Reader Studio 22 is only available in Power Point, if the **Plugin Starting Option** is set to **Load plugin automatically**.
If you want to automatically remove Voice Markups from the text later, select the desired text area, right-click to open the context menu, and choose the option **Remove Voice Markups**.
2. To customize speech output settings (language, voice, pitch, speed, volume, end of sentence pause, audio format,...), click the **Options** button in the **Settings** group. (See Chapter 5)
3. Using **Speaker Profiles** (**Speaker profiles** button in the **Settings** group), you can save pronunciation parameters as a profile, thus creating individualized speakers. (See Chapter 2.6.3)
4. By clicking the **Information** button in the **Settings** group (or the command of the same name in the context menu), you can display the audio length of the selected text section or entire document. You can also display the pronunciation settings at the current positions. (See Chapter 2.7)
5. Using **Dictionary Management** (**Settings** group, **Manage Dictionary** button, or the command of the same name in the context menu), you can create and manage dictionaries directly from PowerPoint, and also make and adjust dictionary entries. (See Chapter 2.7)

Notes on exporting

Which format (MP3 or WAV) is used and where the file is saved depends on the corresponding options selected in the Settings group of the **Read** Tab.

If you export the entire presentation, the name of the PowerPoint presentation will be used for the file name; a presentation called **name.ppt** would thus become an audio file named **name_ppt.mp3** or **name_ppt.wav**.

If you have determined in the settings to export every slide to a separate file, a page number will be appended to the name, e.g. **name_ppt_slide_01.mp3**, **name_ppt_slide_02.mp3**, etc.

To deactivate the integration of Voice Reader Studio 22 with PowerPoint, make the appropriate changes to the program selection in the Integration Manager, and confirm by clicking **OK**.

4.4 Deactivated Office Add-In

In the event that the add-in has been deactivated in the respective Office application (Word, Outlook, PowerPoint), you can activate it as follows:

Go to the **Options** section of the **File** Tab in Word, Outlook or PowerPoint. Please select the display of deactivated elements in the **Add-Ins** area. This is done by selecting the option **Deactivated Elements** in the **Manage** section and then clicking **Go to...**

In the **Deactivated Elements** window, select the deactivated Voice Reader Studio 22 Add-in (if available) and click on **Activate**.

Afterwards, restart Word, or Outlook, or PowerPoint.

5. Adjusting Options (Reading and Export Options)

To customize the reading settings and export options for the conversion into an audio file in Voice Reader Studio 22, please open the **Options** dialogue.

Depending in which application module of Voice Reader Studio 22 you are currently active, you will find the **Options** dialogue as follows:


FROM THE VOICE READER STUDIO 22 APPLICATION WINDOW:

Open the **Read** Tab and the **Options** dialogue  in the **Settings** group.

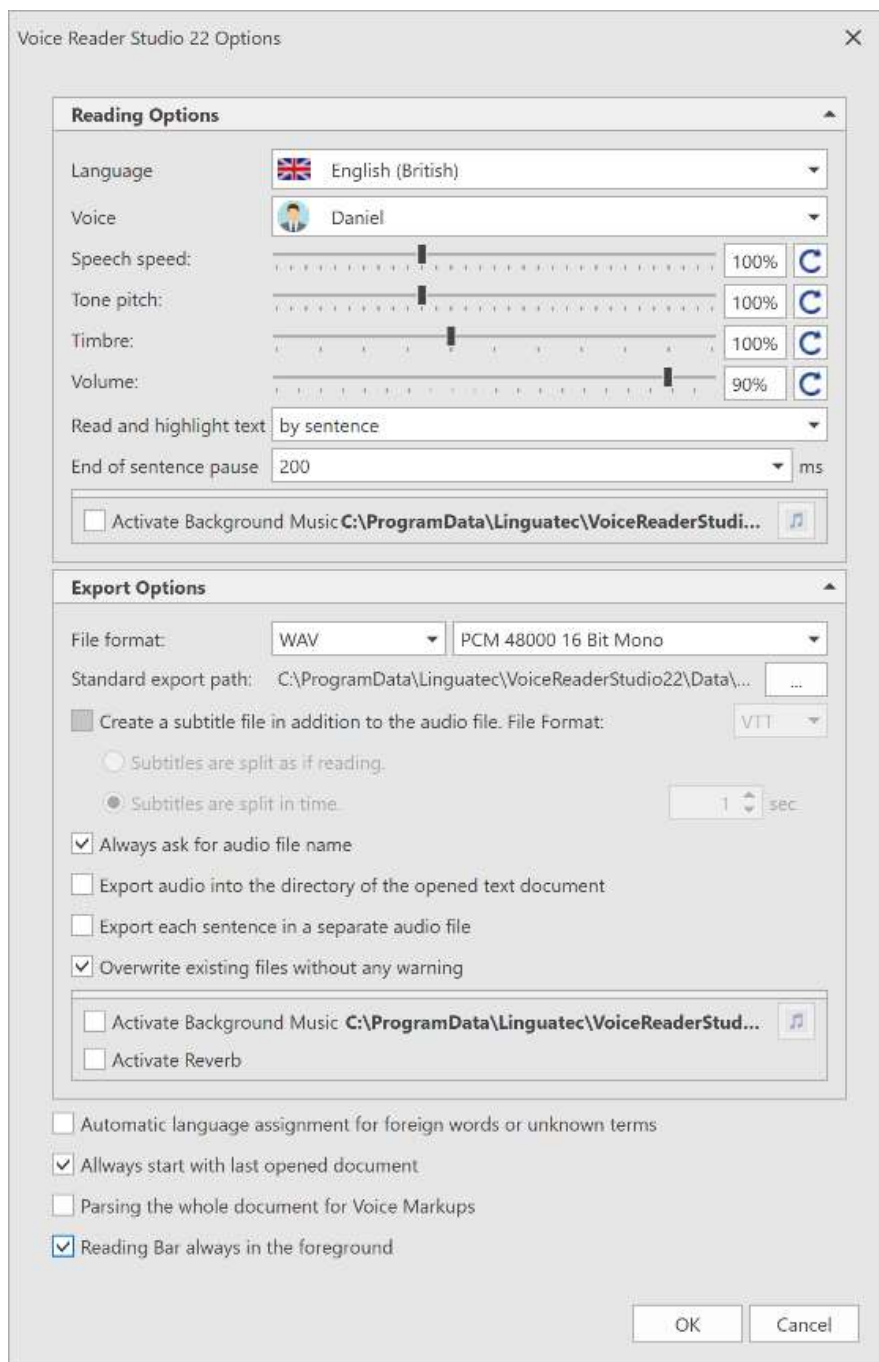
IN VOICE READER STUDIO 22 DIRECT:

Click the **Options**  button in the toolbar.

FROM AN OFFICE PLUGIN:

In the respective Office application (Word, Outlook or PowerPoint), click the **Options** button  in the **Voice Reader Studio 22** Tab.

In the following, you'll find an overview of all reading and export options. Most of these are available for the application window as well as for Voice Reader Studio 22 Direct and the plugins. Options that only apply to a specific application have been designated accordingly.



5.1 Reading Options

Language

If you have purchased and installed several languages for Voice Reader Studio 22, this is where you can choose another language for speech output.

Voice

This lets you choose the reading voice. Both female and male voices are available for most languages.

The so-called Multi-Language Voices are marked with ML. They have additional language capabilities. (See Chapter 2.2)

Speech Speed

Easily accelerate or slow down the speed of speech output using the slide control. The default speed is 100%. By clicking the refresh button at the right border of the dialogue, you can restore the default setting of 100%.

Pitch

If needed, modify the pitch of the speech output using the slide control. The default value is 100%. By clicking the refresh button at the right border of the dialogue, you can restore the default setting of 100%.

Timbre

You can adjust the timbre of the voice darker (lower value) or brighter (higher value) using the slider. You can restore the default setting of 100% via the refresh button on the right edge.

Volume

You can also adjust the volume of speech output in Voice Reader Studio 22. By clicking the refresh button at the right edge, you can restore the default setting of 80%.

NOTE

In the Voice Reader Studio 22 application window, you can also control speed, pitch and volume directly with their respective controls on the **Read** Tab. Language and voice can also be controlled directly using the respective drop-down menus in the **Language & Voice** group on the **Read** Tab.

Read and select text (not available in Voice Reader Studio 22 Direct).

With this option, you determine the type of reading segmentation, i.e. whether the text is to be read and selected by word, sentence or section. Please note that the **by word** setting will divide the text into individual words, which means that every word will be read out separately and independently of the sentence context. This type of segmentation may, for example, be suitable for the reading of foreign language words.

The **by sentence** or **by section** settings are recommended for the fluent reading of standard text documents.

End of sentence pause

Decide whether to place a pause at the end of sentences and how long to make it. The available choices are values between 0 (no Pause), 200, 400, 600, 800, 1000, 1200, 1400 and 1800 milliseconds (ms).

Background Music

If you want to add background music to the reading, you can select it via the options dialogue. Activate the option **Activate Background Music** and proceed in the same way as described in chapter 2.1.2. for setting and testing background music.

5.2 Export Options

File format

This lets you determine whether to export audio files in the WAV or MP3 format.

- The WAV format is a standard audio file format. Data remain uncompressed and - burned to a CD ROM - can usually be played back by regular CD players. Because the data remain uncompressed, WAV files are comparatively large.
- Files in the MP3-Format are compressed and therefore significantly smaller than WAV files. Playback requires a specific program (e.g. Windows Media Player), or an MP3 player. Nowadays, many CD players also have the ability to play MP3 files. Depending on your quality preferences and/or available storage space, you can adjust the output quality of the selected file format.

Standard export path

This lets you determine in which folder to save audio files when exporting speech output. If you want to change the path, click the button next to the entry field and select the desired folder from the list.

Create subtitle file in addition to audio file (not available in Voice Reader Studio 22 Direct)

When exporting, Voice Reader Studio 22 offers the option of creating subtitle files in addition to the audio file.

The formats **VTT** and **SRT** are available for selection.

If you would like to sequence the subtitles in the same way as you did when reading aloud (word by word, sentence by sentence, paragraph by paragraph), select this option:

Subtitles are split as if reading

If the sequencing is to take place at specific time intervals, select the option:

Subtitles are split in time. Enter the time interval.

Prompt for file name at each export

After activating this option, you can change the file name and export location each time you export. If the option is deactivated, the existing file name of the document that is open in the editor will be automatically assigned.

Export audio file to the folder of the open text file

If this option is activated, the audio file is saved to the same folder as the source text file from which it is being generated.

If the option is deactivated, the audio file generated by Voice Reader Studio 22 will be exported to the folder defined under Standard Export Path.

Export Every Word / Every Sentence / Every Paragraph to its own audio file

(not available in Voice Reader Studio 22 Direct)

With this option, you determine whether to save the selected text section to a single audio file, or whether to generate a separate audio file for each reading unit. The reading unit can be a word, a sentence or a paragraph, and is determined in the line Reading unit of the Reading options.

Overwrite files with the same name without confirmation

Audio file names are automatically assigned at the time of export. This option determines what happens when the export folder already contains an audio file with the same name:

- If the option is activated, the existing audio file will be replaced by the new one without confirmation.
- If the option is deactivated, a dialogue comes up that lets you assign a different name to the new file, if necessary.

NOTE

If you use Outlook and have determined in the options that selected emails are not to be exported into separate audio files, you should leave the option deactivated, so as to avoid overwriting the audio file **Selected Emails.*** with each export.

Background Music and Reverb

If you want to export the read aloud including background music and/or reverb, you can also set this directly in the options dialogue.

Activate the option **Activate background music** and/or **Activate reverb** and proceed in the same way as described in chapter 2.1.3. for setting and testing background music and reverb.

5.3 Application Options

Automatic language assignment for foreign words or unknown terms

If the selected voice has pronunciation skills for other languages and a foreign language term is recognized in the text, this option will try to identify the language and adjust the pronunciation according to the respective language.

Always start with last opened document (not available in the Office-Plugin nor in Voice Reader Studio Direct)

If this option is activated, the most recently used document will be opened the next time Voice Reader Studio 22 is started.

Parsing the whole document for Voice Markups (Not available in Voice Reader Studio Direct)

In order to speed up the loading of reading resources, you can deactivate this option. This will cause Voice Reader Studio 22 to start the reading from the cursor position or a selection more rapidly, especially in the case of long texts, since only the reading options selected in Options (**Settings** group, **Options** button) will be applied.

If the option is activated, the entire text before the cursor position (or before the selection) will be searched for Voice Markups when speech output begins, in order to maintain the exact reading parameters (e. g. modified reading options such as voice change, pitch change, etc.), at the selected point in the text.

Reading bar always in the foreground (Not available in Voice Reader Studio Direct)

Activate this option if you want to make sure that no other application window will cover the Voice Reader Studio 22 reading bar.

Office Plugins only: Export each page / Email / Slide to a separate audio file

If this option is activated, the audio export is divided among several files:

- Word: one audio file per page
- PowerPoint: one audio file per slide
- Outlook: one audio file per email (when several emails are selected)

The individual audio files are sequentially numbered (Word / PowerPoint) or named according to Sender, Subject and Date (Outlook), allowing for simpler navigation during playback on a device.

6. Notes on using audio files

You can play the audio files generated by Voice Reader Studio 22 directly on your PC or transfer them to another medium in order to play them with an external device. Voice Reader Studio 22 allows you to save audio files in two formats: MP3 and WAV.

You can set the desired format in the **options** menu. The format chosen depends on the playback device you wish to use:

The **MP3 format** compresses the audio data, resulting in relatively small files. MP3 files can be played on all modern PCs (e.g. using Windows Media Player or Apple QuickTime) and can be transferred to MP3 players. Some CD players also support MP3 files, so that you can also burn the audio files to a CD-ROM.

WAV files are not compressed and are thus larger than MP3 files. WAV files can be used on older Windows PCs without any additional software. If you have a CD burning program like Nero, you can also create an audio CD from WAV files, which can then be played like a music CD on all CD players.

7. Appendix

7.1 Phonetic Transcription

You can find phonetic transcription tables for all available Voice Reader Studio languages in the path:

C:\ProgramData\Linguatec\VoiceReaderStudio22\Data\Dictionary

For example:

phonem_ged.txt for German,
phonem_eng.txt for British English,
phonem_enu.txt for American English
phonem_frf.txt for French
phonem_iti.txt for Italian,
phonem_spe.txt for Spanish....

You can find tables also on our website in the support area of Voice Reader Studio 22.

Detailed information on **creating dictionary entries using phonetic transcription** can be found in chapter 2.8.2.4

Detailed information about **inserting a phonetic transcriptions** into the text to be read **using Voice Markups** can be found in Chapter 2.7.6

7.2 Keyboard Navigation

The Voice Reader Studio 22 editor supports operation by keyboard for many commands.

Keyboard Commands (Shortcuts)

File commands

New file	CTRL+N
Open file	CTRL+O
Save file	CTRL+S
Save file as	CTRL+W

Edit

Select all	CTRL+A
Copy	CTRL+C
Paste	CTRL+V or SHIFT+INST
Undo last	CTRL+Z
Redo last	CTRL+Y
Find	CTRL+F
Replace	CTRL+H

General commands

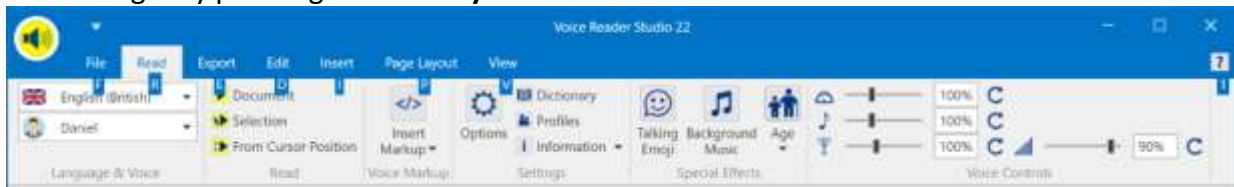
Open Options dialogue	CTRL+ALT+O
Shut down	ALT+F4
Menu and Accesskeys visible	ALT
Maximize window	ALT + Space + X
Minimize window	ALT + Space + N
Zoom in editor	CTRL + turn mouse wheel

Reading and exporting

Read entire text	CTRL+ALT+P
Export entire text	CTRL+ALT+A

Show Accesskeys

Please begin by pressing the **ALT** key.

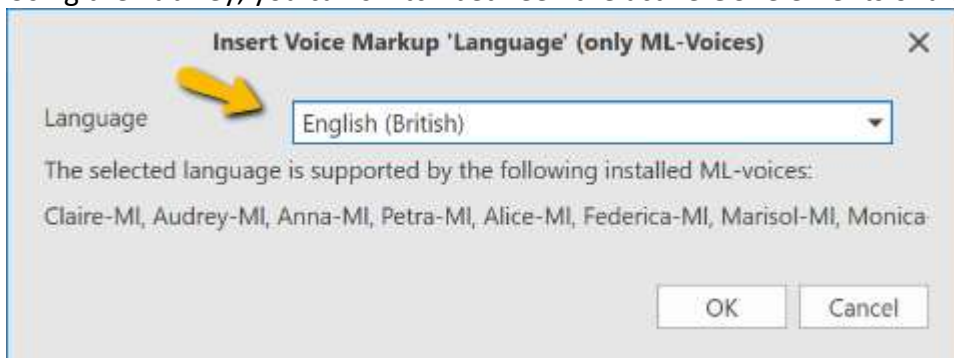


In the Voice Reader Studio 22 interface, individual GUI elements are represented for you in short form by numbers and letters. Press these on the keyboard (one after another, not simultaneously) to access the desired element.

For example, access the **File** Tab with **ALT** **F** (press the keys one after another, not simultaneously!) the **Read** Tab with **ALT** **R**, the **Edit** Tab with **ALT** **E**, the **Options** button (**Read** Tab) with **ALT** **R** **P**.

The Tab key:

Using the Tab key, you can switch between the active GUI elements of a dialogue window.



For example, in the **Insert Voice Markup 'Language'** window, in order to navigate between **OK**, **Cancel**, and the **language selection (Language field)**. The currently active field will be displayed with a blue border.

The Arrow keys ↑ and ↓ :

Use the arrow keys to navigate through an active drop-down list entry.

The Control key (CTRL):

By holding the CTRL key down and using the Tab key (for switching to a button), or alternatively, the arrow key (when switching to a list entry), you can switch between different sections of a dialogue window.

The Enter key:

The Enter key confirms a selection.

Application examples

a) Insert Voice Markup “Spelling” by keyboard navigation:

Select word by **double-click**. **ALT R I T Tab ↓** press arrow key several times, until **Spelling** is displayed, then press **Enter** to confirm.

b) Insert Voice Markup “Language” by keyboard navigation:

Select word by **double-click**. **ALT R I L Tab ↓** (oder **↑**) press arrow key several times, until **the desired language** is displayed in the selection window, then press **Enter** to confirm.

c) Increase speech speed

ALT R C ↑ press arrow key several times, until the desired speed level is reached and press **Enter** to confirm.

d) Switch Speaker:

ALT R 2 CTRL (press and hold) + **↓** press arrow key several times, until the desired **speaker** has been selected, then press **Enter** to confirm the selection.

e) Create new dictionary

ALT R M CTRL (press and hold) + **Tab Tab**

The **New** button will have an orange border. Press **Enter** to confirm.

Press **Enter** to confirm the language selection.

7.3 ML-Voices and Extended Language Abilities

Multi-language voices (ML voices) are available for the following languages. They are included in the respective Voice Reader Studio language.

Example:

Voice Reader Studio 22 German contains the two German ML voices **Anna ML** and **Petra ML**.

Both voices have additional extended speech capabilities in the languages:

**English (UK),
French,
Spanish
and Italian.**

Voice Reader Studio Language:	ML Voice	Extended Language Ability:
German	Anna ML	English (UK) French Spanish Italian
German	Petra ML	English (UK) French Spanish Italian
French	Audrey ML	English (UK) German Spanish Italian
French (Canadian)	Amelie ML	English (US)
Spanish	Marisol ML	English (UK) German French Italian
Spanish	Monica ML	English (UK) German French Italian
Spanish (Mexican)	Paulina ML	English (US) French (Canadian)
Italian	Alice ML	English (UK) French Spanish German

Italian	Federica ML	English (UK) French Spanish German
Dutch	Claire ML	English (UK) French Spanish German
English (US)	Ava ML	French Spanish
English (US)	Zoe ML	French Spanish
English (Indien)	Rishi ML	Hindi
English (India)	Isha ML	Hindi
Hindi	Neel ML	English (Indian)
Hindi	Kiyara ML	English (Indian)
Cantonese (Hongkong)	Sin-Ji ML	English (UK)
Cantonese (Hongkong)	Aasin ML	English (UK)
Korean	Yuna ML	English (US)
Korean	Nuri ML	English (US)
Dongbei (China)	Dongmei ML	English (US) Mandarin (China)
Mandarin (China)	Tian-Tian ML	English (US)
Mandarin (China)	Li-Li ML	English (US)
Mandarin (China)	Bin-Bin ML	English (US)
Mandarin (China)	Ban-Ban ML	English (US)
Mandarin (China)	Bo-Bo ML	English (US)
Mandarin (China)	Han ML	English (US)
Mandarin (China)	Lan-Lan ML	English (US)
Mandarin (China)	Li-Lian ML	English (US)
Mandarin (China)	Li-Sheng ML	English (US)
Mandarin (China)	Shan-Shan ML	English (US)
Mandarin (China)	Sha-Sha ML	English (US)
Mandarin (China)	Tao-Tao ML	English (US)

Mandarin (China)	Ting-Ting ML	English (US)
Mandarin (Taiwan)	Mei-Jia ML	English (US)
Russian	Katya ML	English (UK)
Sichuanese	Fangfang ML	English (US)
Shanghainese	Lulu ML	English (US)
Czech	Zuzana ML	German English (UK)
Turkish	Cem ML	English (UK)
Arabic	Maged ML	English

7.4 Accent Voices

Language	Accent Voices (Purchase of the respective additional language of Voice Reader Studio 22 is required)
German	Zuzana ML (Czech Accent) Claire ML (Dutch Accent) Audrey ML (French Accent) Alice ML (Italian Accent) Federica ML (Italian Accent) Marisol ML (Spanish Accent) Monica ML (Spanish Accent)
English (British)	Maged ML (Arabic Accent) Sinji ML (Cantonese (Hongkong) Accent) Zuzana ML (Czech Accent) Claire ML (Dutch Accent) Audrey ML (French Accent) Anna ML (German Accent) Petra ML (German Accent) Melina (Greek Accent) Alice ML (Italian Accent) Federica ML (Italian Accent) Katya ML (Russian Accent) Marisol ML (Spanish Accent) Monica ML (Spanish Accent) Cem ML (Turkish Accent)
English (India)	Kiyara ML (Hindi Accent) Neel ML (Hindi Accent)

English (US)	<p>Amelie ML (French (Canadian) Accent)</p> <p>Binbin ML (Mandarin (China) Accent)</p> <p>Bobo ML (Mandarin (China) Accent)</p> <p>Lili ML (Mandarin (China) Accent)</p> <p>Lilian ML (Mandarin (China) Accent)</p> <p>Lisheng ML (Mandarin (China) Accent)</p> <p>Shasha ML (Mandarin (China) Accent)</p> <p>Tiantian ML (Mandarin (China) Accent)</p> <p>Tingting ML (Mandarin (China) Accent)</p> <p>Dongmei ML (Dongbei (China) Accent)</p> <p>Nuri ML (Korean Accent)</p> <p>Yuna ML (Korean Accent)</p> <p>Paulina ML (Spanish (Mexican) Accent)</p> <p>Lulu ML (Shanghainese (China) Accent)</p> <p>Fangfang ML (Sichuanese (China) Accent)</p> <p>Meijia ML (Mandarin (Taiwan) Accent)</p>
French	<p>Claire ML (Dutch Accent)</p> <p>Anna ML (German Accent)</p> <p>Petra ML (German Accent)</p> <p>Alice ML (Italian Accent)</p> <p>Federica ML (Italian Accent)</p> <p>Marisol ML (Spanish Accent)</p> <p>Monica ML (Spanish Accent)</p>
French (Canadian)	<p>Ava ML (English (US) Accent)</p> <p>Zoe ML (English (US) Accent)</p> <p>Paulina ML (Spanish (Mexican) Accent)</p>
Hindi	<p>Isha ML (English (India) Accent)</p> <p>Rishi ML (English (India) Accent)</p>
Italian	<p>Claire ML (Dutch Accent)</p> <p>Audrey ML (French Accent)</p> <p>Anna ML (German Accent)</p> <p>Petra ML (German Accent)</p> <p>Marisol ML (Spanish Accent)</p> <p>Monica ML (Spanish Accent)</p>
Mandarin (China)	<p>Sinji ML (Cantonese (Hongkong) Accent)</p> <p>Dongmei ML (Dongbei (China) Accent)</p> <p>Fangfang ML (Sichuanese (China) Accent)</p>
Portuguese	<p>Marisol ML (Spanish Accent)</p>
Spanish	<p>Claire ML (Dutch Accent)</p> <p>Audrey ML (French Accent)</p>

	Anna ML (German Accent) Petra ML (German Accent) Alice ML (Italian Accent) Federica ML (Italian Accent)
Spanish (Mexican)	Ava ML (English (US) Accent) Zoe ML (English (US) Accent) Amelie ML (French (Canadian) Accent)

7.5 Language Codes

Each available Voice Reader Studio language is assigned a code (lang). With this code can be set (e. g.) the reading language in a **Voice Markup** (see Chapter 2.7) or in a **Speaker profile** (see Chapter 2.7.3).

Language	Code (lang)	Voice name (voice)	Gender
Arabic	arw	Tarik	M
Arabic	arw	Maged-ML	M
Arabic	arw	Laila	F
Arabic (Gulf Region)	arg	Mariam	F
Bengali (India)	bei	Paya	F
Bulgarian	bgb	Daria	F
Croatian	hrh	Lana	F
Basque	bae	Miren	F
Danish	dad	Sara	F
Danish	dad	Magnus	M
German	ged	Anna-ML	F
German	ged	Petra-ML	F
German	ged	Yannick	M
German	ged	Markus	M
German	ged	Viktor	M
English (American)	enu	Ava-ML	F
English (American)	enu	Samantha	F
English (American)	enu	Tom	M
English (American)	enu	Evan	M
English (American)	enu	Nathan	M
English (American)	enu	Zoe-ML	F
English (Australian)	ena	Karen	F

English (Australian)	ena	Lee	M
English (Australian)	ena	Matilda	F
English (British)	eng	Serena	F
English (British)	eng	Daniel	M
English (British)	eng	Kate	F
English (British)	eng	Oliver	M
English (British)	eng	Malcom	M
English (British)	eng	Stephanie	F
English (Indian)	eni	Veena	F
English (Indian)	eni	Rishi-ML	M
English (Indian)	eni	Sangeeta	F
English (Indian)	eni	Isha-ML	F
English (Irish)	ene	Moirra	F
English (Scottish)	ens	Fiona	F
English (South African)	enz	Tessa	F
Finnish	fif	Satu	F
Finnish	fif	Onni	M
French	frf	Audrey-ML	F
French	frf	Aurelie	F
French	frf	Thomas	M
French (Canadian)	frc	Amelie-ML	F
French (Canadian)	frc	Nicolas	M
French (Canadian)	frc	Chantal	F
French (Belgium)	frb	Aude	F
Galician	gle	Carmela	F
Greek	grg	Melina	F
Greek	grg	Nikos	M
Hebrew	hei	Carmit	F
Hindi	hii	Lehka	F
Hindi	hii	Neel-ML	M
Hindi	hii	Kiyara-ML	F
Indonesian (Bahasa)	idi	Damayanti	F
Italian	iti	Alice-ML	F
Italian	iti	Federica-ML	F
Italian	iti	Paola	F

Italian	iti	Luca	M
Italian	iti	Emma	F
Japanese	jpj	Ayane	F
Japanese	jpj	Daisuke	M
Japanese	jpj	Ichiro	M
Japanese	jpj	Nozomi	F
Japanese	jpj	Mizuki	F
Japanese	jpj	Sakura	F
Japanese	jpj	Koharu	F
Japanese	jpj	Seiji	M
Cantonese (Hongkong)	cah	Sin-Ji-ML	F
Cantonese (Hongkong)	cah	Aasing-ML	M
Kannada (India)	kai	Alpana	F
Catalan	cae	Montserrat	F
Catalan	cae	Jordi	M
Korean	kok	Sora	F
Korean	kok	Yuna-ML	F
Korean	kok	Nuri-ML	F
Korean	kok	Minsu	M
Korean	kok	Jina	F
Malay	msm	Amira	F
Dongbei (China)	doc	Dongmei-ML	F
Mandarin (China)	mnc	Tian-Tian-ML	F
Mandarin (China)	mnc	Li-Li-ML	F
Mandarin (China)	mnc	Bin-Bin-ML	M
Mandarin (China)	mnc	Ban-Ban-ML	M
Mandarin (China)	mnc	Bo-Bo-ML	M
Mandarin (China)	mnc	Han-ML	M
Mandarin (China)	mnc	Lan-Lan-ML	F
Mandarin (China)	mnc	Li-Lian-ML	F
Mandarin (China)	mnc	Li-Sheng-ML	F
Mandarin (China)	mnc	Shan-Shan-ML	F
Mandarin (China)	mnc	Sha-Sha-ML	F
Mandarin (China)	mnc	Tao-Tao-ML	M
Mandarin (China)	mnc	Ting-Ting-ML	F

Mandarin (Taiwan)	mnt	Mei-Jia-ML	F
Marathi	mai	Ananya	F
Dutch (Netherlands)	dun	Claire-ML	F
Dutch (Netherlands)	dun	Xander	M
Dutch (Belgium)	dub	Ellen	F
Norwegian	non	Nora	F
Norwegian	non	Henrik	M
Polish	plp	Ewa	F
Polish	plp	Zosia	F
Polish	plp	Krzysztof	M
Portuguese	ptp	Catarina	F
Portuguese	ptp	Joana	F
Portuguese	ptp	Joaquim	M
Portuguese (Brazilian)	ptb	Luciana	F
Portuguese (Brazilian)	ptb	Felipe	M
Portuguese (Brazilian)	ptb	Fernanda	F
Romanian	ror	Ioana	F
Russian	rur	Milena	F
Russian	rur	Yuri	M
Russian	rur	Katya-ML	F
Swedish	sws	Alva	F
Swedish	sws	Oskar	M
Swedish	sws	Klara	F
Slovak	sks	Laura	F
Spanish	spe	Marisol-ML	F
Spanish	spe	Monica-ML	F
Spanish	spe	Jorge	M
Spanish (Chile)	spl	Francisca	F
Spanish (Colombian)	spc	Soledad	F
Spanish (Colombian)	spc	Carlos	M
Spanish (Mexican)	spm	Paulina-ML	F
Spanish (Mexican)	spm	Angelica	F
Spanish (Mexican)	spm	Juan	M
Spanish (Argentine)	spa	Diego	M
Spanish (Argentine)	spa	Isabela	F

Tamil	tai	Vani	F
Telugu	tei	Geeta	F
Thai	tht	Kanya	F
Thai	tht	Narisa	F
Czech	czc	Iveta	F
Czech	czc	Zuzana-ML	F
Turkish	trt	Yelda	F
Turkish	trt	Cem-ML	M
Hungarian	huh	Mariska	F
Valencian	vae	Empar	F
Persian (Farsi)	fai	Dariush	M
Vietnamese	viv	Linh	F
Ukrainian	uku	Lesya	F
Slovenian	sls	Tina	F
Sichuanese	sic	Fangfang-ML	F
Sichuanese	sic	Feifei	F
Shanghainese (China)	Shc	Lulu-ML	F
Shaanxi (China)	sxc	Hao-Hao	M

7.6 Speaker Style and Voices

Language	Voices	Supported Speaker Style
Arabic (Gulf Region)	All	Normal, forceful, apologetic

Arabic	All	Normal, forceful, apologetic
Basque	All	Normal, forceful, apologetic
Bengali (India)	All	Normal, forceful, apologetic
Bhojpuri (India)	All	Normal, forceful, apologetic
Bulgarian	All	Normal, forceful, apologetic
Catalan	Jordi	Normal, forceful, apologetic
Corean	All	Normal, forceful, apologetic
Croatian	All	Normal, forceful, apologetic
Czech	Zuzana ML	Normal, forceful, apologetic
Danish	Sara	Normal, forceful, apologetic
Dutch	Claire ML	Normal, forceful, apologetic
Dutch (Belgium)	All	Normal, forceful, apologetic
English (UK)	All	Normal, forceful, apologetic
English (US)	All	Normal, forceful, apologetic
English (Australia)	All	Normal, forceful, apologetic
English (Irish)	All	Normal, forceful, apologetic
English (Indian)	Veena, Rishi ML	Normal, forceful, apologetic
English (Scottish)	All	Normal, forceful, apologetic
English (South Africa)	All	Normal, forceful, apologetic
Farsi	All	Normal, forceful
Finnish	All	Normal, forceful, apologetic
French	All	Normal, forceful, apologetic
French (Belgium)	All	Normal, forceful
French (Canada)	All	Normal, forceful, apologetic
Galician	All	Normal, forceful, apologetic
German	All	Normal, forceful, apologetic
Greek	All	Normal, forceful, apologetic
Hebrew	All	Normal, forceful, apologetic
Hindi	Kiyara ML, Lehka	Normal, forceful, apologetic
Indonesian (Bahasa)	All	Normal, forceful, apologetic
Italian	All	Normal, forceful, apologetic
Kannada (India)	All	Normal, forceful
Malay	All	Normal, forceful, apologetic
Marathi	All	Normal, forceful, apologetic
Norwegian	All	Normal, forceful, apologetic
Polish	All	Normal, forceful, apologetic
Portuguese	All	Normal, forceful, apologetic
Portuguese (Brazilian)	All	Normal, forceful, apologetic
Romanian	All	Normal, forceful
Russian	Katya ML	Normal, forceful, apologetic
Slowakisch	All	Normal, forceful, apologetic
Slovak	All	Normal, forceful, apologetic
Spanish	All	Normal, forceful, apologetic
Spanish (Argentine)	All	Normal, forceful, apologetic
Spanish (Chile)	All	Normal, forceful, apologetic
Spanish (Colombian)	All	Normal, forceful, apologetic

Spanish (Mexican)	All	Normal, forceful, apologetic
Swedish	All	Normal, forceful
Tamil	All	Normal, forceful
Telugu	All	Normal, forceful
Thai	All	Normal, forceful, apologetic
Turkish	All	Normal, forceful, apologetic
Ukrainian	All	Normal, forceful
Ungarian	All	Normal, forceful, apologetic
Valencian	All	Normal, forceful, apologetic
Vietnamese	All	Normal, forceful, apologetic

7.7 SAPI5

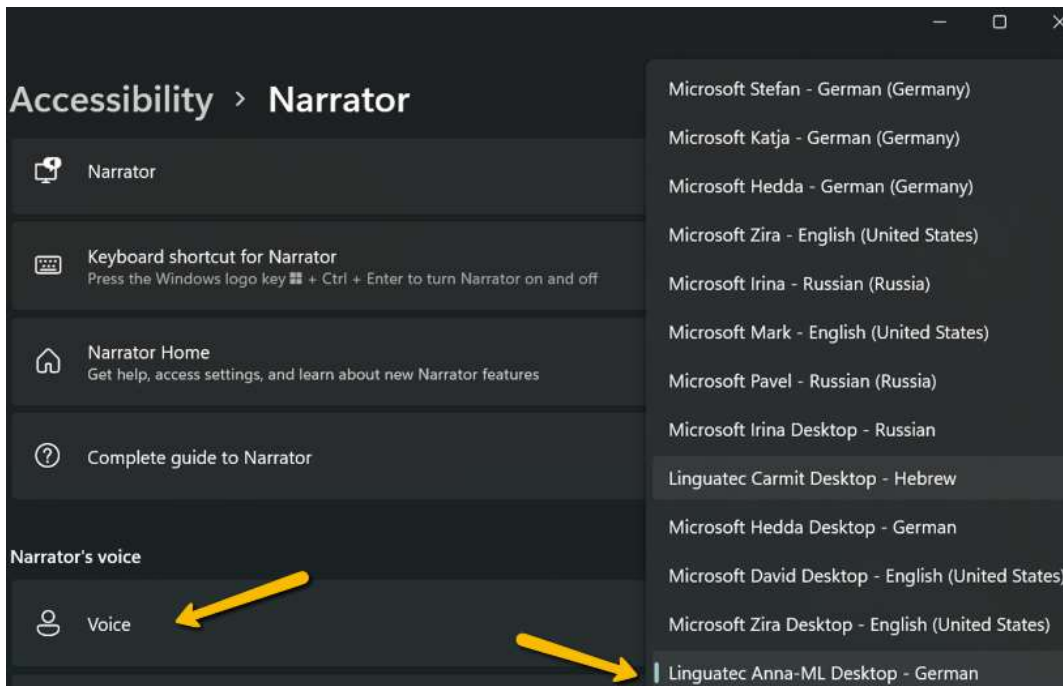
COMPATIBILITY:

Voice Reader Studio 22 voices are **SAPI5** compatible.

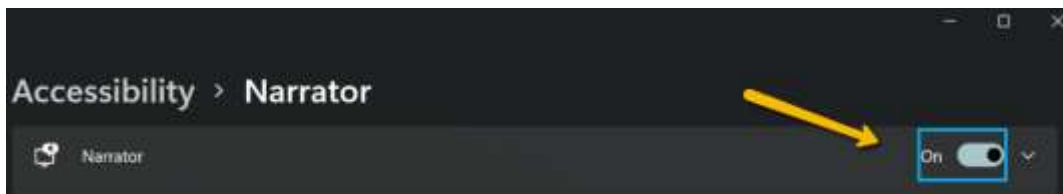
USING THE WINDOWS VOICE OUTPUT (NARRATOR) WITH LINGUATEC VOICE READER STUDIO 22 VOICES:

The Windows Narrator can be started using the key combination CTRL + Windows key + N. After you have installed and activated Voice Reader Studio 22, the voices of Voice Reader Studio 22 can be used and selected as Narrator voices for the Windows Voice Output

Step 1: Narrator's voice selection



Step 2: Activation of the narrator function „On“



Software License Agreement

Please install the program only after you have carefully read through this software license agreement. By installing the software, you agree to the terms and conditions of this software license agreement.

The program package contains programs and associated documentation, hereinafter referred to as "works". The works are protected by copyright. Linguattec or third parties have property rights to these works. If the rights belong to third parties, Linguattec has appropriate rights of use to the works. Linguattec authorizes the legal buyer of the program package (customer) to use the works in accordance with the following conditions. The right of use becomes null and void if the customer violates these conditions of use, or the right of use is cancelled in accordance with the following regulations.

The customer is entitled:

1. in agreement with copyright law, to use the program for the purpose of processing or for observing, investigating or testing on one computer for their own purposes.
2. to prepare machine-readable or printed copies including a backup from the machine-readable part of the program, as long as this is necessary for use in accordance with the agreement. Use within a network is not permissible however. Specific programs can include mechanisms that restrict or prevent copying.
3. to use and publish the audio files generated by the program license free for one's own purposes. If the customer uses the program for the commercial generation of audio files for third parties, then third parties must obtain individual licenses from Linguattec.

The customer is not entitled:

1. to replicate and translate the works or even partially decompile the machine language code (object code) of the works into any other code form in any manner other the one described above. The right to decompilation in certain exceptions in accordance with copyright remains unaffected.
2. to rent or to lease the works.
3. to transfer the works including these conditions of use to a third party (new buyer) without previous written consent from Linguattec or to allocate sublicenses to third parties.

Furthermore, the customer shall enclose the copyright notice included in the works in each copy, each revision and all program modules of the works that are connected to other programs, as well as on the associated data carriers. All copies of the works including all program modules are also subject to these conditions of use. If the license holder is in breach of these agreement provisions, he/she shall be obliged to return the software package to Linguattec without delay.

The licensor, his employees and representatives shall only be liable for any contractual or non-contractual damage if the damage can be attributed to gross negligence or a deliberate act. Liability for secondary damages is excluded in all cases.

© Linguattec GmbH

All rights reserved.

All product and brand names are the property of their respective owners.